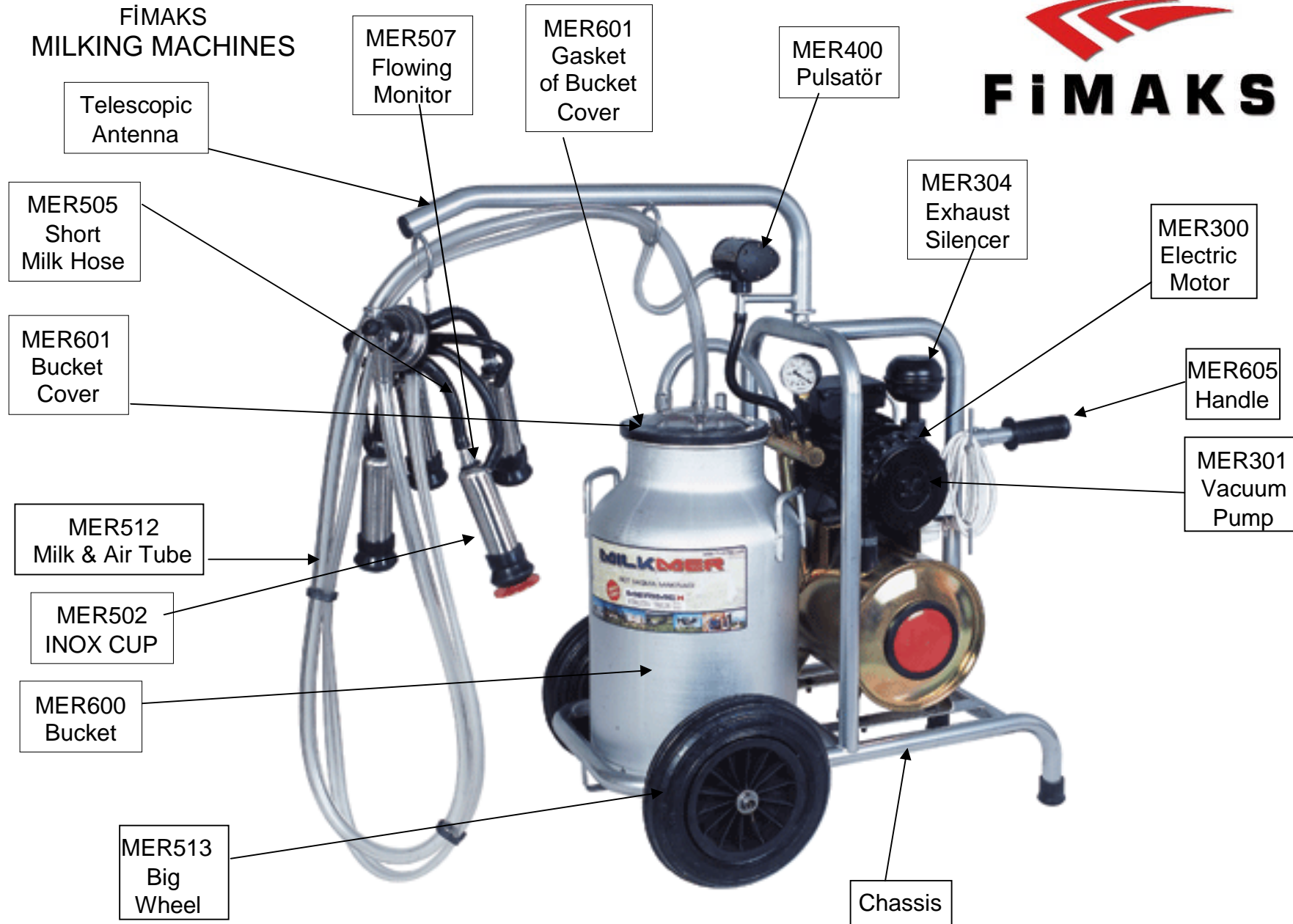


FİMAKS
MILKING MACHINES

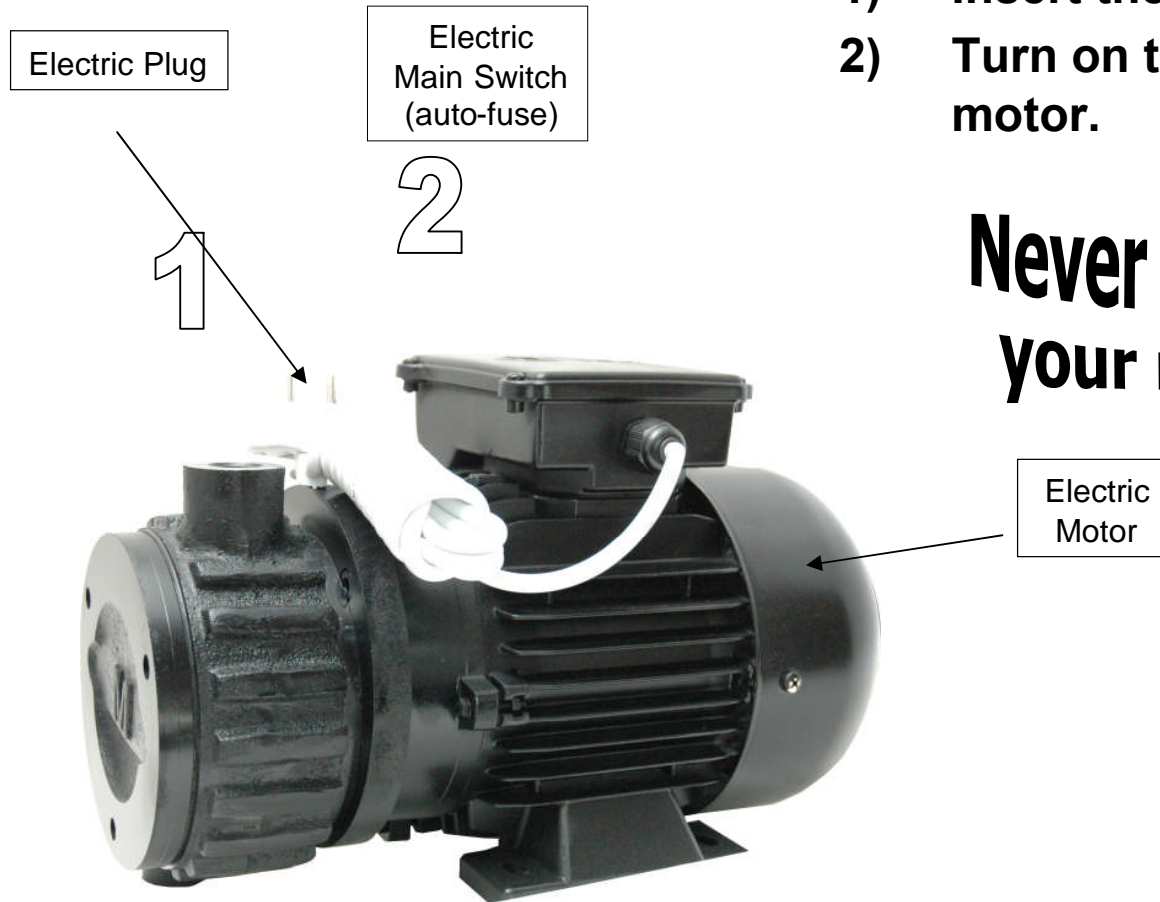


CONTENTS

FIMAKS MILKING MACHINES

- Preparations for Milking Pg. 1 – 3
- Setting of Liners Pg. 4 – 5
- Following the Operation Pg. 6
- Getting out of Liners Pg. 7
- Cleaning of Machine Pg. 8
- Replacement of Liners Pg. 9 – 10
- Useful Tips Pg. 11
- Pulsator Problems & Solutions Pg. 12
- General Problems & Solutions Pg. 13

STARTING TO MILKING



- 1) Insert the plug into the socket
- 2) Turn on the switch & run the motor.

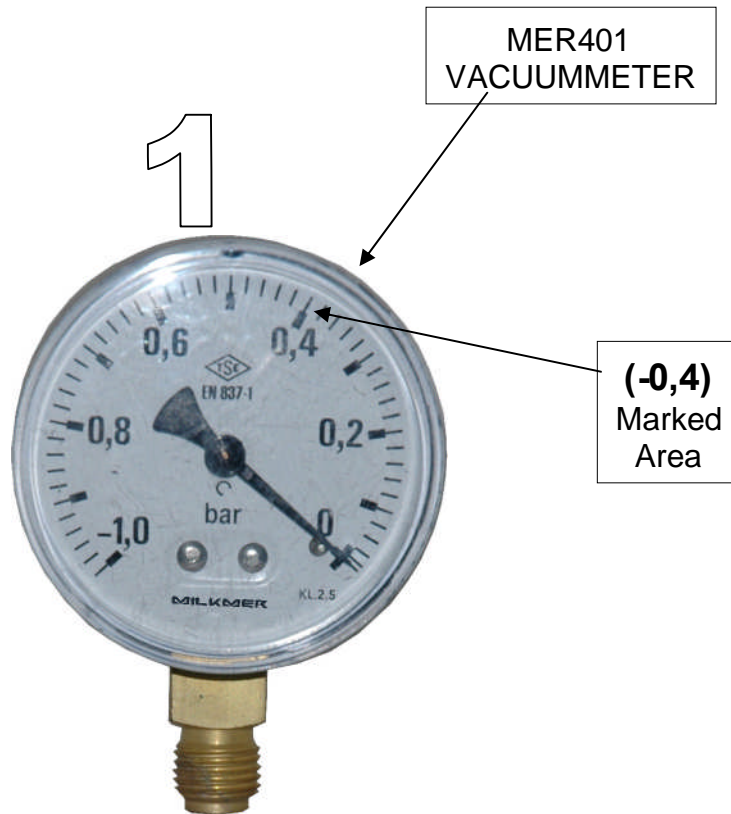
**Never LUBRICATE
your machine !..**

Top Butterfly
of Claw
(Left)



Do Not FORGET
to PULL UP the
TOP BUTTERFLYS
of both claws !..

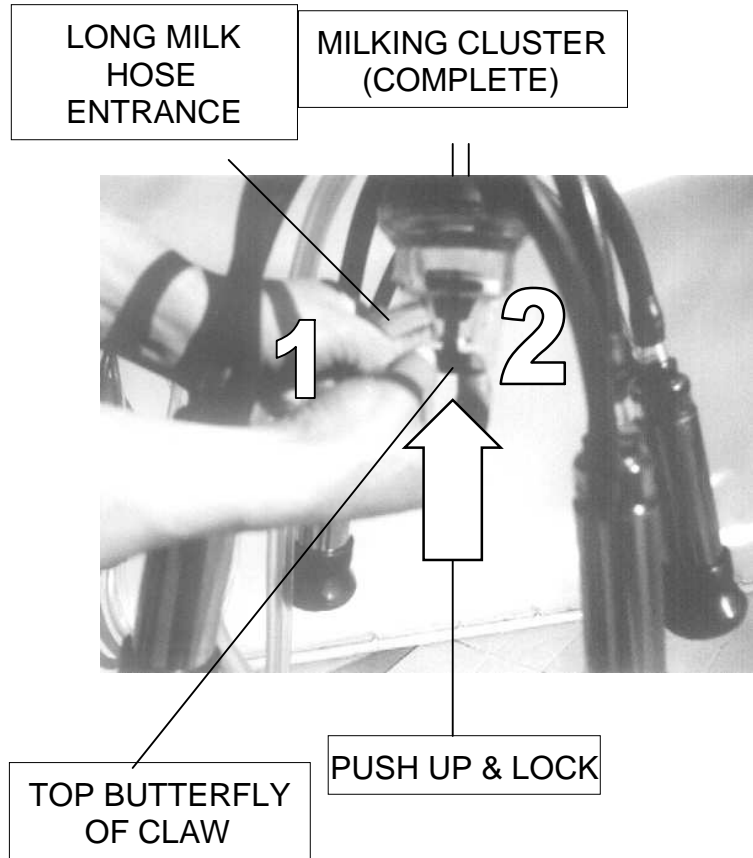
- 1) Close the Bucket Cover
- 2) Pull up the TOP BUTTERFLY Claw



**Carefully WATCH
the INDICATOR
of VACUUMMETER**

- 1) See the indicator of
VACUUMMETER
on marked area :
(- 0,4)

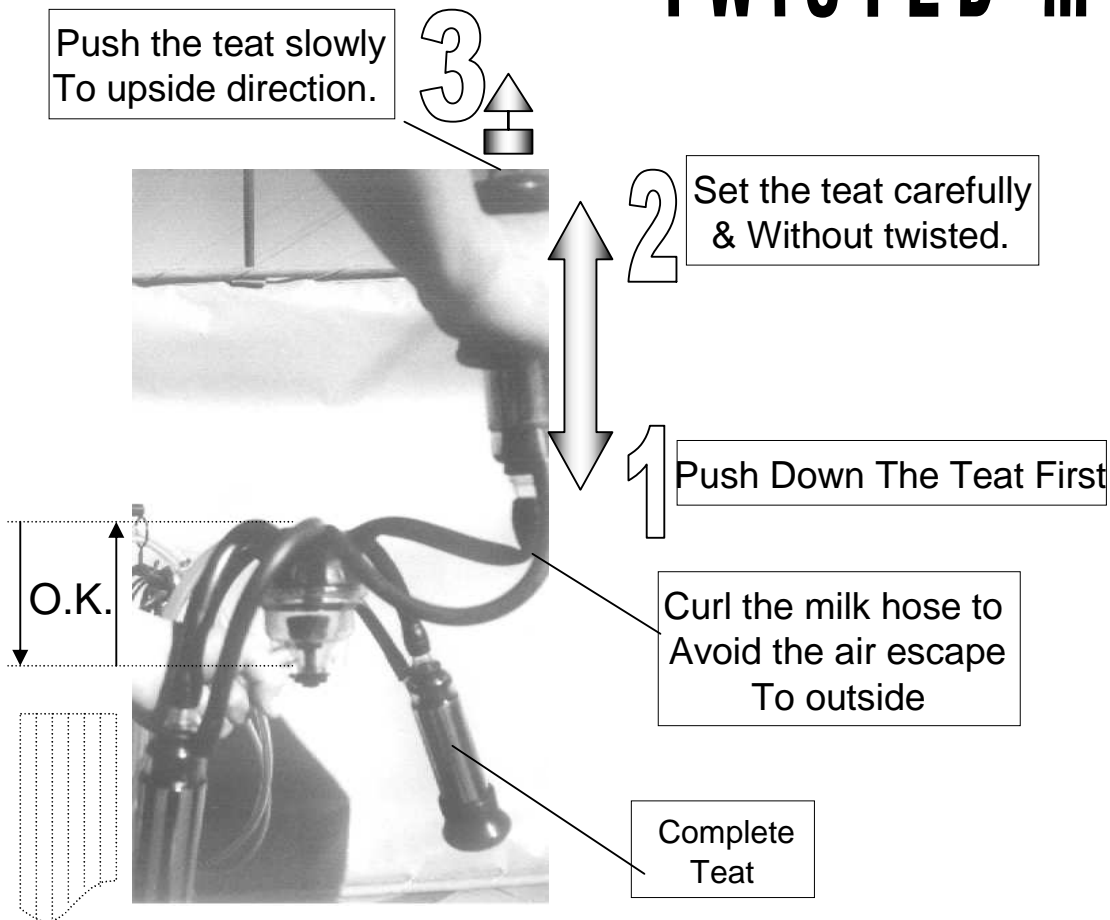
SETTING of TEATS



Do Not LET the AIR OUTSIDE from Teats !..

- 1) Turn UP-DOWN the claw by holding the transparent long hoses direction
- 2) Let the teats twist and fall down from claw
- 3) Push up and lock the top butterfly of claw
- 4) Hold the milking cluster straightly as parallel to the ground (Do not let the air outside)

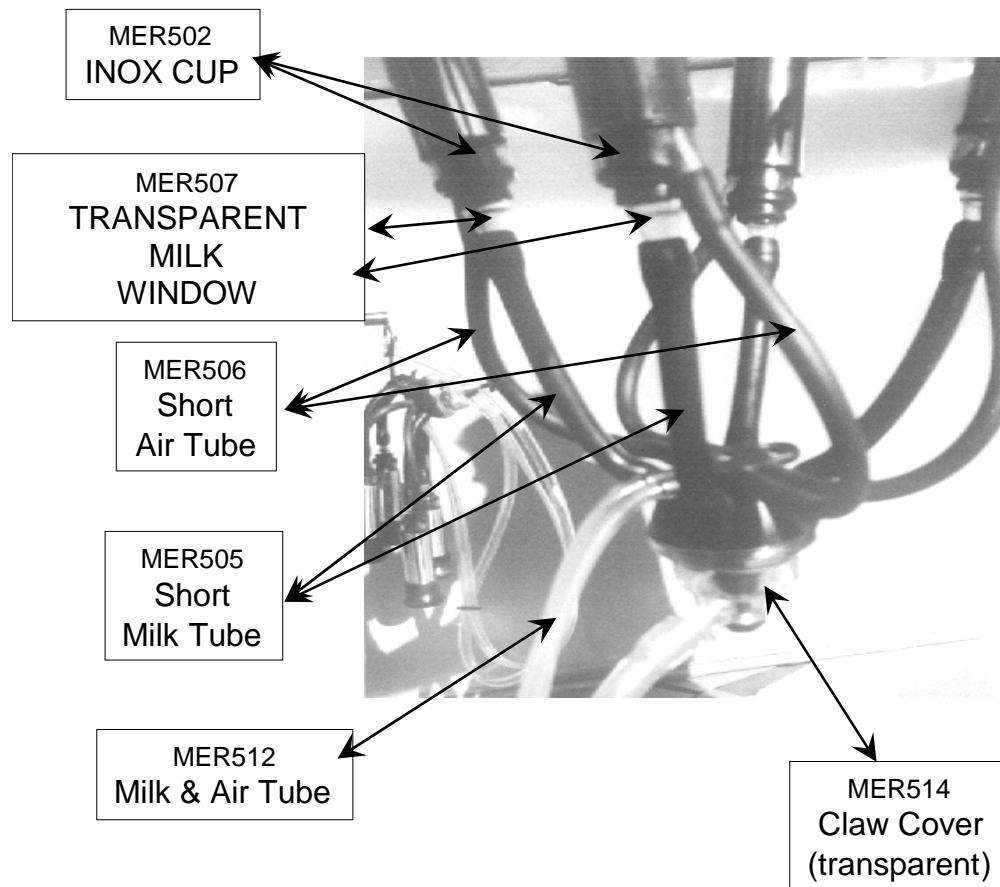
Never SET the Teats TWISTED !..



- 1) Take the teats in your hand one by one , push down the teat first and curl the milk hose to avoid the air escape to outside
- 2) Set the teats according to the usual position of cow , slowly and without twist by opening the curled point of hose to upside direction

FOLLOWING the OPERATION

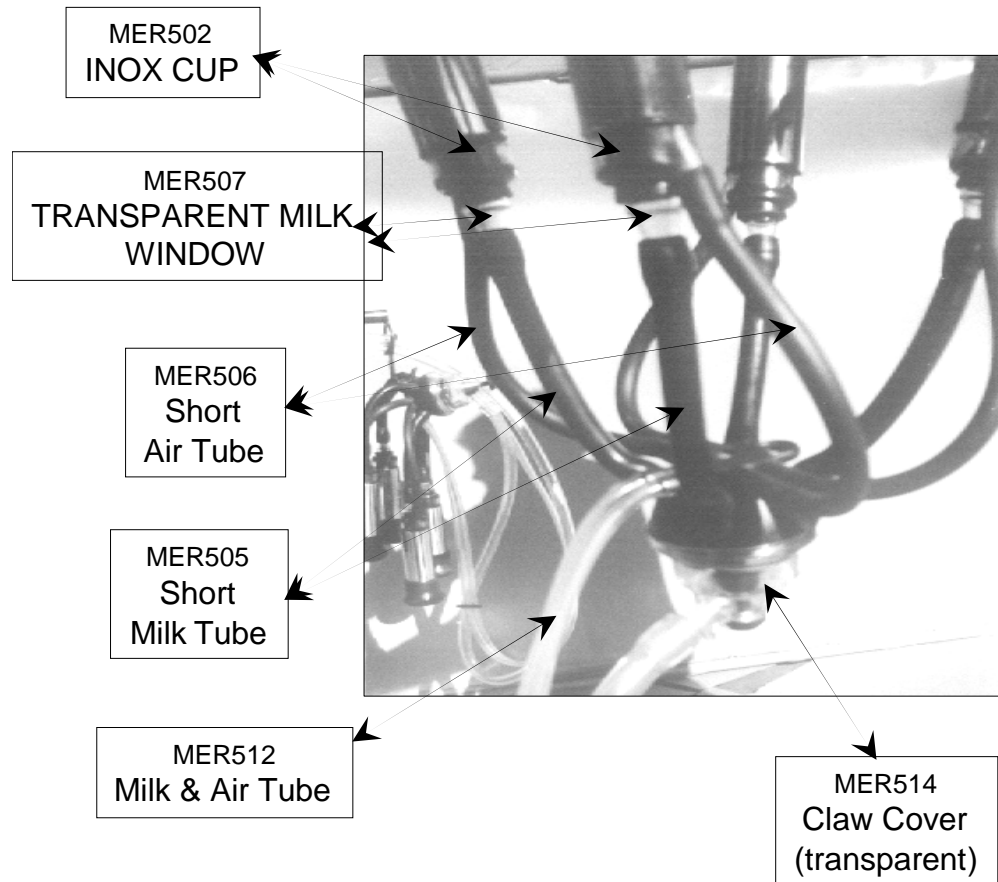
**Follow the flowing
of milk from the
FLOWING MONITOR !..**



- 1) See the moving of inside the inox cups
- 2) See the flowing of milk from transparent milk window
- 3) Be sure that every teat setted straightly and propotional
- 4) Be sure that milk flows into the transparent claw cover
- 5) Be sure that milk flows into the transparent long milk hose
- 6) Be careful that there is no liquid (water,milk etc.) in the transparent double long air hose

GETTING OUT of TEATS

**WAIT the milk END
in all teats before
GETTING OUT !..**



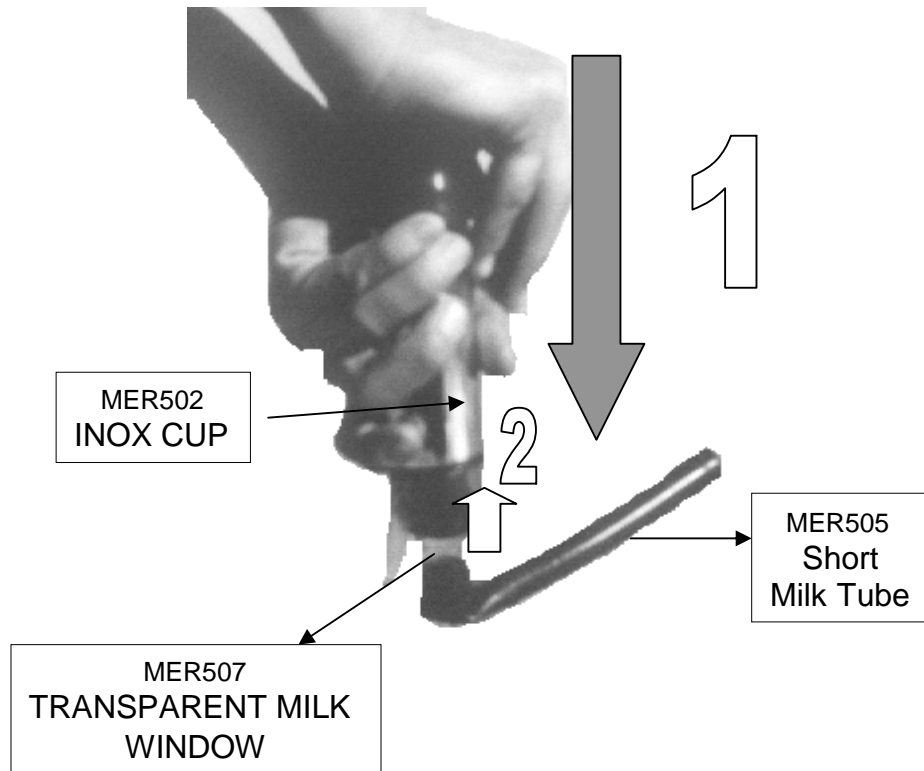
- 1) See the Transparent milk window that there is no milk flowing (wait the milk end in all liners before getting out , because usually there is more milk in the back teats of cow)
- 2) Be sure that there is no in the transparent claw cover
- 3) When all milk end in all teats , twist the lock of claw's top butterfly and pull it to the outside direction
- 4) The milking cluster leaves from teats by itself

CLEANING of Milking Machines

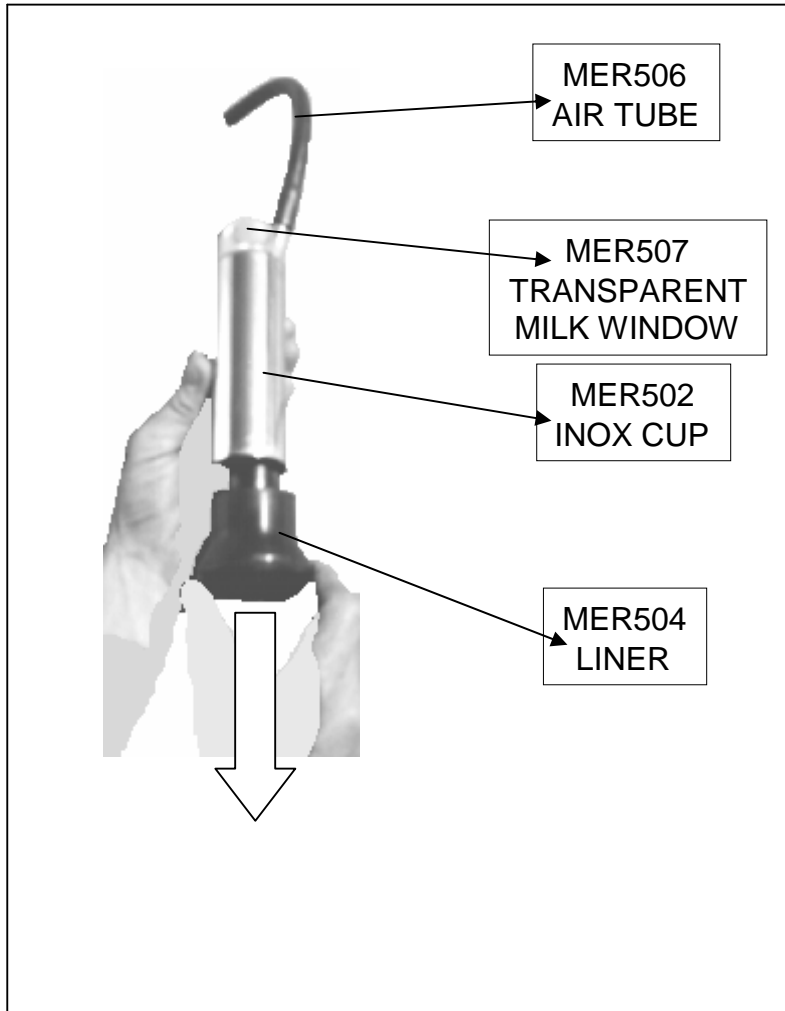


- 1) Transfer the milk in the bucket into another container and put the empty bucket its place again
- 2) Operate the machine again supposing that you are milking
- 3) Prepare the disinfected solution by mixing it with warm water
- 4) Sink the milking cluster with all liner into the solution and push the top butterfly of claw inside
- 5) See that the solution flow into the bucket
- 6) Clean the teats and tranparent long milk hoses by brushing with your brush sets
- 7) Seperate the transparent claw cover from claw. Wash inside the cover and gasket of it by brush
- 8) Shake the bucket and empty the solution in it
- 9) Do not forget tor rinse your machine by absorbing clean water
- 10) When you finish the cleaning , put a cover on your machine to avoid dust and put your machine in a dry & clean place

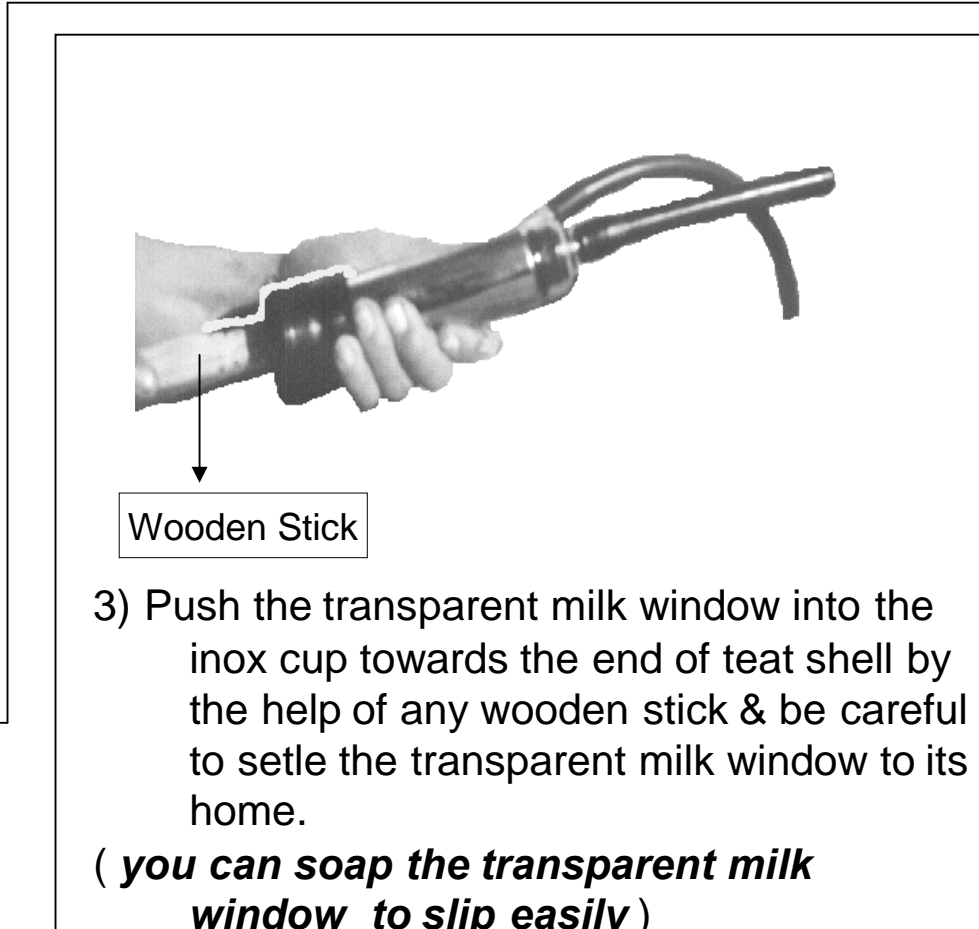
REPLACEMENT of TEATS



- 1) Push the flowing monitor with short milk hose into the inox cup strongly & take out from the liner
- 2) Take out the teat from inox cup
- 3) Insert the new liner into the inox cup & set the head of liner into the mouth of inox cup



- 1) Take out the liner by pulling from inox cup.
- 2) Insert the new liner into the inox cup & set the head of liner into the mouth of inox cup



**BE CAREFUL to SET the TEATS
NOT TWISTED !..**

USEFUL TIPS

- 1) Never wash your machine. Wipe with a dampened sponge or dustcloth and then dry. Keep your machine covered in dry and clean place.
- 2) Never grease any part of your machine. Your machine is produced as dry system completely. Extra care is not necessary.
- 3) Do not regulate the settings of your machine yourself or do not allow regulations to an unauthorised person. All balances and tests are done in factory.
- 4) It will be an advantage to wash the teats of your animals and machines with a disinfected solution after each milking operation.
- 5) Do not forget that you can cause illness of MASTITIS (Blind Teat) if you do not set the teats to cows' straightly and use your machine correctly.
- 6) Do not allow your neighbours to use your machine & you do not use someones' used machine. Otherwise you can face to infectious illness.
- 7) Be careful to use your machine at same hours with same sort of cows in every day. But if you have some ill cows, you can milk them after finishing others.
- 8) You have to renew the teats with KRAL branded originals in every 6 (six) months , whether you did not use them.
- 9) Put one tea sponge dose baby powder into the vacuum pump in every 3 (three) months to avoid the corrosion & for long lived graphite blades.
- 10) You can notice the decreasing of bacterium ratio in your milk , if you clean your machine after every use regularly.

PULSATOR Problems & Solutions

PROBLEM	PROBABLE REASON	SOLUTION
Pulsator is not working ? <i>(Please be careful ; - to open and dissamble your pulsator on a flat place. - not to lose small parts - to set the parts in correct places tightly.)</i>	The valves are close	Twist and open the valves
	The air has not taken off and rised	Apply the "Preperations for Milking" operations
	The bottom hose of pulsator is not fixed	Fix the vacuum hose to the bottom of pulsator
	The bottom hose of pulsator is blocked by dirtiness	Clean the vacuum hose of pulsator
	Pulse setting bolt is twisted too much to the right/left side	Regulate the bolt to its correct balance
	Diaphragms are stayed in blind points	Open the pulsator & fixed the diaphragms to their places
	Pulsator become dirty because of dust, water or milk	Open the pulsator & clean it
	Diaphragms are ripped or done balloon	Renew the diaphragms
	Inside of the pulsator is jammed by straw etc.	Open the pulsator & clean it
	The filter of pulsator become dirty	Open the pulsator & clean it
Pulsator is working too slow or irregularly ?	Vacuum ratio of your system is low	Increase the vacuum ratio
	Vacuum hoses & connections may be dirty or blocked	Clean the vacuum hoses & connections
	Teats may be ripped or loosen	Renew the teats
	The body & pulse setting bolts of pulsator are loosen	Tighten them
	Air filter may be dirty	Check & clean the air ways of pulsator

GENERAL Problems & Solutions

PROBLEM	PROBABLE REASON	SOLUTION
Vacuummeter is not showing the value or Vacuum is not increasing to the necessary level ?	There is AIR LEAK in vacuum hoses	Determine , correct & remove the problem
	There is AIR LEAK in air tube side cover	Determine , correct & remove the problem
	There is AIR LEAK in air regulator	Determine , correct & remove the problem
	There is AIR LEAK from discharge plug	Determine , correct & remove the problem
	There is AIR LEAK in milking cluster	Determine , correct & remove the problem
	There is corrosion on graphite blades of vacuum pump	Renew them
	There is AIR LEAK on bucket or gasket of bucket cover	Determine , correct & remove the problem
	There is a problem about the air gauge	Renew it
Vacuum is increasing too much	Air regulator is too tight	Loose it
Pulsator is working so slow / fast ?	Pulsator settings may be changed by someone	Tight or loose the pulse setting bolt by twisting until supplying 18 pulses in 15 seconds.
Air regulations & balances of the machine are O.K. , but it is working slowly ?	It is time to renew the teats	Renew the teats in every 6 (six) months regularly
	The inner side of milk hoses are blocked by fat	Clean them with brush regularly
	The inner side of transparent claw cover is blocked by fat	Clean it regularly
There is no electric on machine or or there is runaway electric current ?	There is a problem on your main energy system	Call the service or an authorised electrician
	There is a problem on your socket or cable connections	Call the service or an authorised electrician
	The water entered into the ; box on motor / plug / switch	Call the service or an authorised electrician