



MAIZE HARVESTER USER'S MANUAL

ADDRES: Fimaks Makina A.Ş.
Bursa yolu 2.km DSİ Karşısı
Karacabey-BURSA TURKEY
TEL: +90.224.6623743
FAX: +90.224.6623747

Internet: www.fimaks.com
E-mail: info@fimaks.com

TECHNICAL SPECIFICATIONS

MODEL	:	FMS 01
NUMBER OF ROWS	:	1
WIDTH	:	2210 mm.
LENGTH	:	2070 mm.
HEIGHT (with chute)	:	3250 mm.
HEIGHT (with chute folded downwards)	:	2200 mm.
WEIGHT	:	540 kg.
TYRE	:	16,50 X 6,50-8 6PR
CHOPPING KNIVES	:	10
CUTTING KNIVES	:	2
DRIVE (from tractor to chopping wheel)	:	4 V-belts (17 X 3750)
GREASE NIPPLES	:	5 (except pto drive shaft)
PTO SPEED	:	540 rpm.
CHOPPED PRODUCT LENGTH	:	4,5 mm.
CHUTE DIRECTION	:	adjustable by a hydraulic piston
CAPACITY	:	40 tons/hour

SAFETY INSTRUCTIONS

1. Machine must never be tested on a tractor in an enclosed space because of the danger of poisonous exhaust gases.
2. Before making adjustments on the machine the engine must be stopped.
3. Be cautious when sharpening the knives.
4. The chopping unit must always be in balance; broken knives, bent scoops etc. have to be replaced by new ones immediately. If when operating the machine, an abnormal vibration or change in the noise is noticed, the machine should be stopped immediately and the cause of the problem located.
5. Always use a pto drives shaft with a freewheel clutch and fit the guard chain to a not rotating structural part.
6. Use jack stand when storing the machine.
7. Keep well clear of rotating parts at all times. Keep hands and feet out of reach of intake: never push or pull at a beginning of blockage, etc!
8. All safety guards must be fitted during operation and transport of the chopper. Guards are fitted for the safety of the operator and to comply with agricultural safety regulations.
9. Always comply with local safety and traffic regulations; ensure that the transport safety guard is in position before transporting the machine.
10. If necessary use front end weights to keep the tractor manageable.
11. Do not allow anyone to ride on the chopper or tractor. Keep people and animals at a safe distance.
12. Do never exceed the operational limitations as given in this manual. (for example max. pto speed)

ATTACHMENT TO THE TRACTOR

1. The three different cross-shaft positions allow the EM 1 to be set to suit the tractor being used.
2. The guides are to be adjusted to run parallel to the ground by means of the top link. Dependent on the length of the top links either the front or the rear hole in the hitch frame can be used.
3. If necessary the pto drive shaft should be shortened to prevent damage when it is in its shortest position. Care must be taken to ensure the pto drive shaft is not shortened too much.
4. Always use stabilizers or check chains when attaching the machine to the tractor to prevent sideways movement.
5. By unfastening clamp bracket the upper chute can be folded downwards to facilitate passage under low openings.
NOTE: The folded down position is no transport position; it must be used for passages, ducts, and etc. only.

INSTRUCTIONS FOR CHOPPING

1. Ensure the machine is working at needed rpm (pto speed 540 rpm) before beginning the chopping operation. This rpm must be maintained during work.
2. Always be sure the cut-off discs are rotating just clear of each other. Only work with sharp chopping knives.
3. If a trailer is being towed behind the machine, the operator should be careful when turning to the right to avoid damage to the machine.
4. If ground conditions are bad, i.e. very wet soil or loose dry sand, it is advisable to reduce the pressure on the support wheel by carrying the machine on the tractor hydraulics.
5. Leave a long stem in order to prevent:
 - a. Damage to the machine from stones,
 - b. Unnecessary wear of knives and discs, caused by sand abrasion.
6. The chute is operated by means of a control cable. When in the working position the control unit is placed in a bracket which has to be fitted to the mudguard of the tractor.
7. When the chute is blocked the access cover in the lower chute should be unscrewed to give access for removing the blockage. *Engine should be stopped!*

SERVICING

Note: Operations which have to be performed on the bottom side of the machine can be simplified by disconnecting the top link and the tractor end of the hydraulic control and then pushing the machine over on its back.

By removing bolts the complete chopping and feed units can be folded apart. Always clean space behind rollers if access is enabled.

1. General instruction

After a few hours of work of a new or overhauled machine check all bolts and nuts are tightened well. Recheck regularly.

2. Shear bolt safety

If the gathering drums become blocked, the shear bolt will shear and disconnect the drive to the feed system. A replacement bolt M8X40 – 5.8 and M8 lock nut in good condition should be fitted. If required the upper flange can be rotated by wrench.

3. Sharpening and readjustment of chopper wheel

A. Sharpening

1. Rotate machine at working speed (pto 540 rpm);
2. Firmly set grinding stone against chopping knives (adjust knob to the left), uniformly slide sharpening unit several times along guide strip.

Note: When knob has been adjusted to its utmost left position without obtaining a sufficient sharpening effect, renew grinding stone.

Attention: Ensure grinding stone attaching screws are appropriately tightened thus preventing stone breaking to pieces by vibrations.

3. Set grinding stone free from chopping knives (adjust knob to the right), then stop machine and check sharpness of knives; if required repeat steps 1. and 2.; adjust knob completely to the right and check clearance between chopping knives and counter knife, readjust if required.

B. Readjustment

As soon as clearance between chopping and counter knife becomes visible (e.g. after sharpening of the chopping knives), readjustment is required. Proceed as follows:

1. Rotate chopping wheel clockwise, using special wrench (4), until the chopping knives and counter knife touch (i.e. the knives are ticking slightly against the counter knife).
2. Rotate chopping wheel counter clockwise until chopping knives just pass clear of counter knife (ticking stops).

4. Adjusting the cutting discs

Always ensure the cutting discs are rotating just clear (0.3 mm. distance) of each other.

Proceed as follows:

Loosen bolt and nut of the drum at the bottom. By turning the square end of the shaft to the right the disc will move downwards and vice versa. After correctly positioning the disc tighten nut and bolt.

Note: When tightening bolt always remember that the height of the disc concerned will alter a little.

5. V-belt tensioning

Belts should be tensioned by tightening the nuts on the tensioning bracket. Belt tension should be checked regularly, especially during first few hours of work. To allow adjustment bolts should be loosened one turn. After tensioning always make certain that these bolts are tightened securely.

Attention: 1. Only exchange complete sets of V-belts.

2. Release belt tension during off-season period.

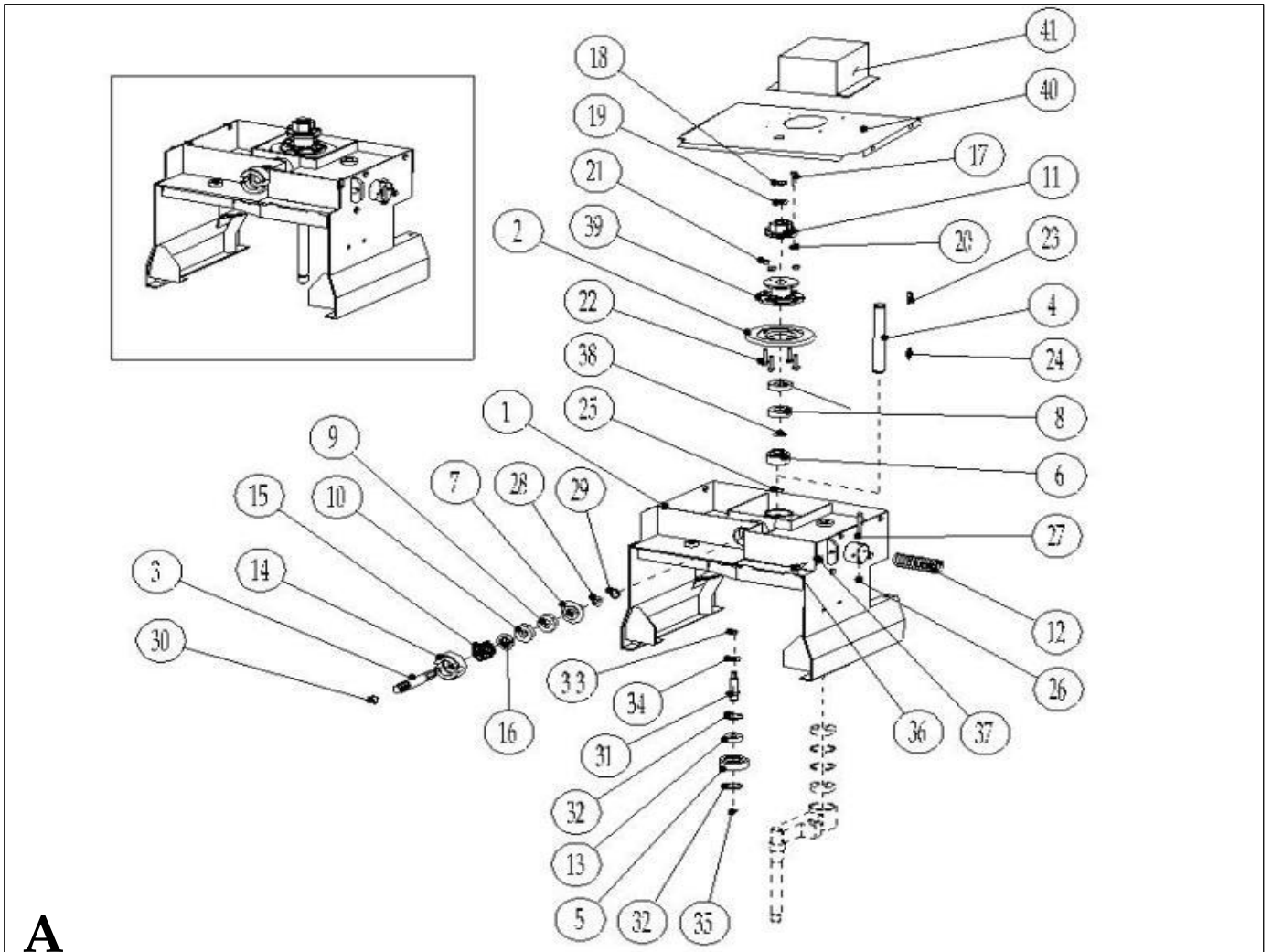
The correct V-belt tension avoids belt problems. When the belts are pushed by thumb and if they bend for 1-2 cm. it means that the belts are adjusted correctly.

6. Lubrication

This machine has 5 grease nipples: Two on the front and the rear of the chopping wheel, two on the rotating point of the chute and one on the feeding unit (accessible via taking the protecting box on the feeder unit). These grease nipples should be greased as follows; the chopping wheel: after every 8 hours of working, the feeder unit: after every 48 hours of working, the chute: after every 24 hours of working.

The pto drive shaft should be greased as it writes its own user's manual.

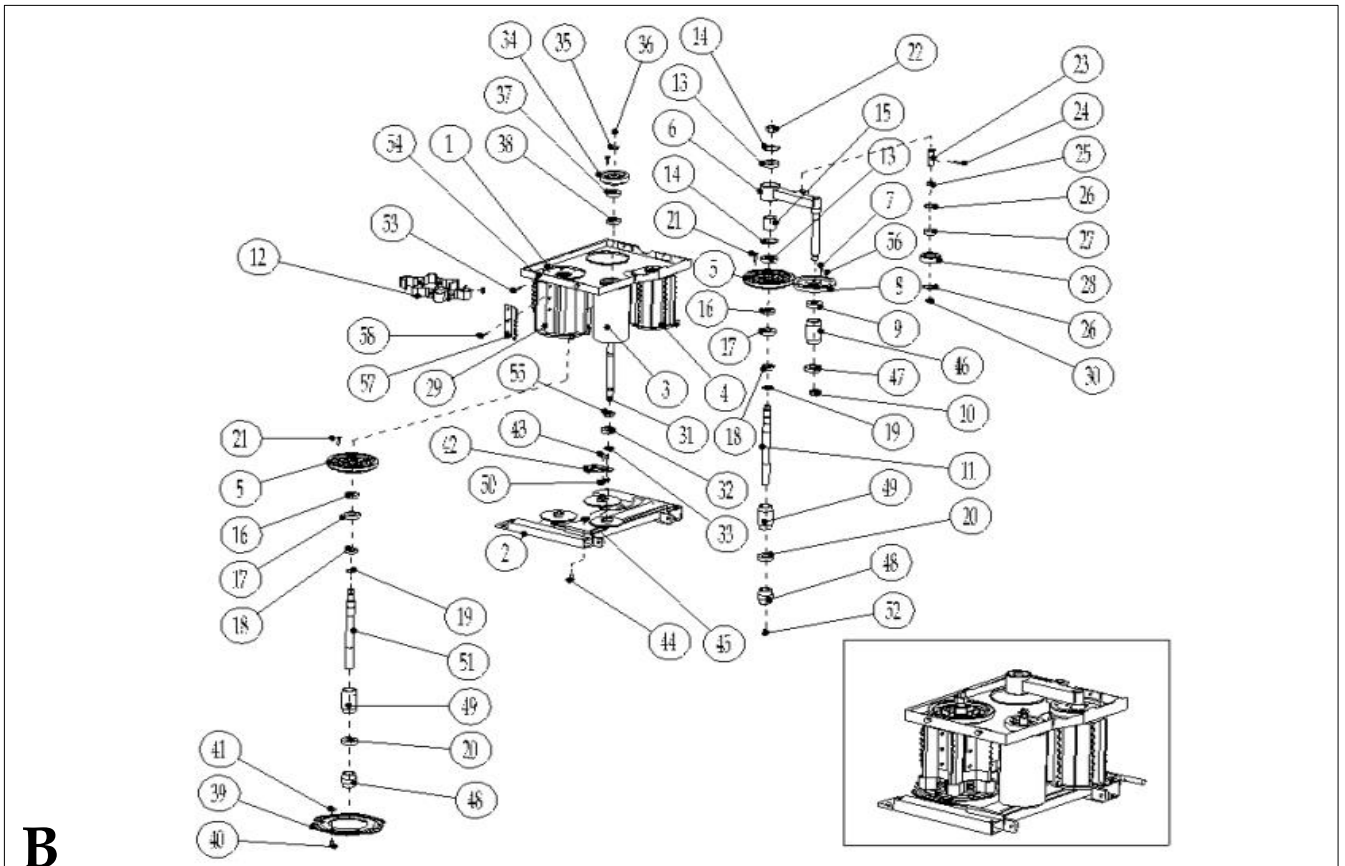
DRUM HOUSING



A

		ENGLISH
FMS 01		MAIZE HARVESTER
No	Reference	
A-1	01.01.01.00.000	Drum Housing Complete
A-2	01.01.00.00.004	Conical Gear
A-3	01.01.00.00.002	Coupling Shaft With Keyway
A-4	01.01.00.00.008	Gear Shaft
A-5	01.01.00.00.011	Gear Z20
A-6	01.01.00.00.010	Gear Z16
A-7	01.01.00.00.005	Pignon Gear
A-8	6206 2RS Rulman	6206 2RS Bearing
A-9	6205 2RS Rulman	6205 2RS Bearing
A-10	6205 2RS Rulman	6205 2RS Bearing
A-11	01.01.00.00.007	Transmission Coupling
A-12	01.01.00.00.015	Spring
A-13	6204 2RS Rulman	6204 2RS Bearing
A-14	01.01.00.00.001	Coupling
A-15	01.01.00.00.013	Coupling Spring
A-16	01.01.00.00.003	Washer
A-17	M8x40 Civata DIN 601	M8x40 Bolt DIN 601
A-18	Ø30 Dış Segman DIN 471	Ø30 Ring DIN 471
A-19	Ø30xØ42x1 Pul DIN 988	Ø30xØ42x1 mm Spacer DIN 988
A-20	M8 Somun DIN 934	M8 Nut DIN 934
A-21	M10 Somun DIN 934	M10 Nut DIN 934
A-22	M10x35 Civata DIN 601	M10x35 Bolt DIN 601
A-23	7x8x30 mm Kama	7x8x30 mm Key
A-24	7x8x30 mm Kama	7x8x30 mm Key
A-25	01.01.00.00.031	Ring
A-26	M8 Somun DIN 934	M8 Nut DIN 934
A-27	M8x70 Civata DIN 601	M8x70 Bolt DIN 601
A-28	01.01.00.00.017	Gear Spacer Washer
A-29	01.01.00.00.032	Coupling Ring
A-30	Ø25 Dış Segman DIN 471	Ø25 Ring DIN 471
A-31	01.01.00.00.009	Shaft
A-32	Ø47 İç Segman DIN 472	Ø47 Ring DIN 472
A-33	M12 Somun DIN 934	M12 Nut DIN 934
A-34	M12 Pul DIN 125	M12 Washer DIN 125
A-35	Ø20 Dış Segman DIN 471	Ø20 Ring DIN 471
A-36	M10x35 Civata DIN 601	M10x35 Bolt DIN 601
A-37	M10 Somun DIN 934	M10 Nut DIN 934
A-38	Ø30xØ42x1 Pul DIN 988	Ø30xØ42x1 mm Spacer DIN 988
A-39	01.01.00.00.006	Gear Coupling

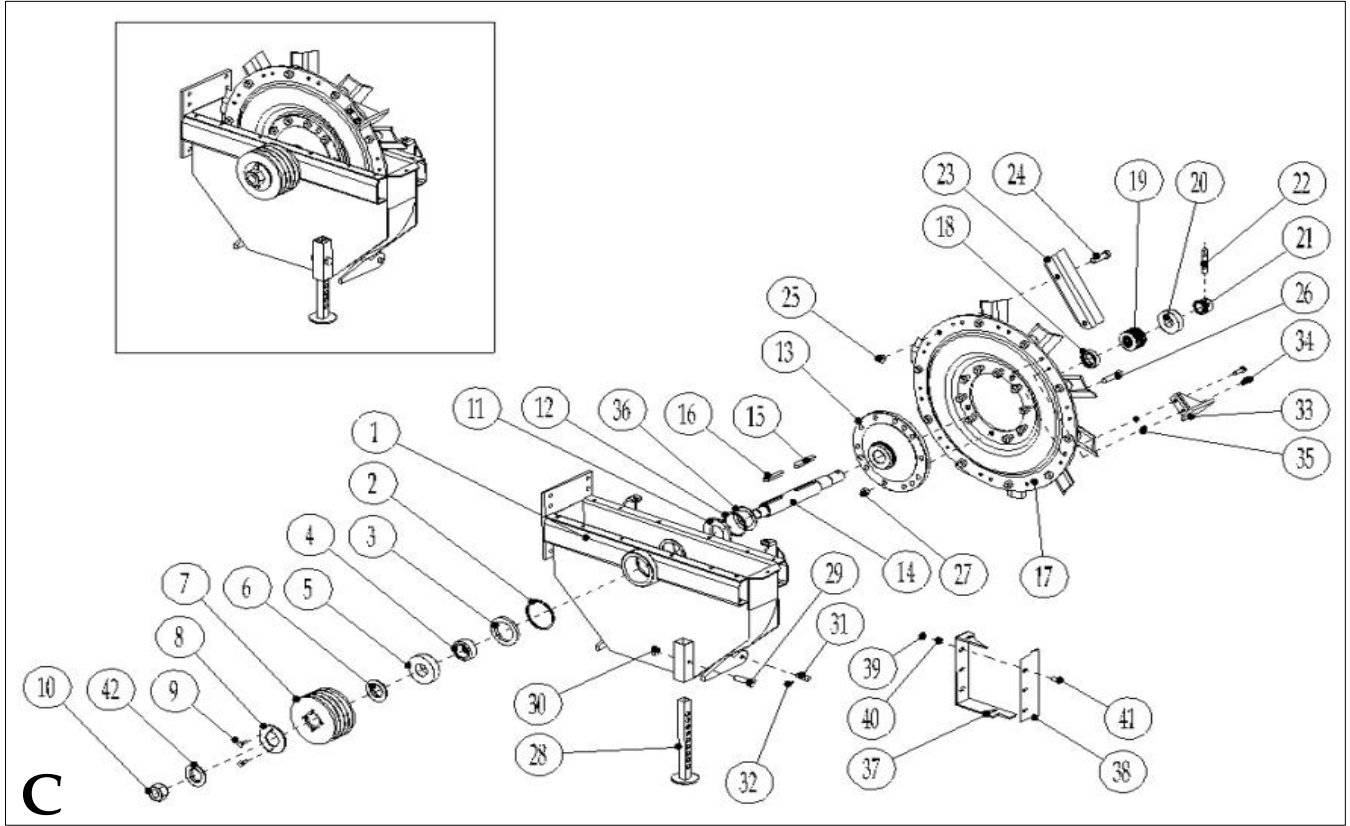
FRONT GROUP



B

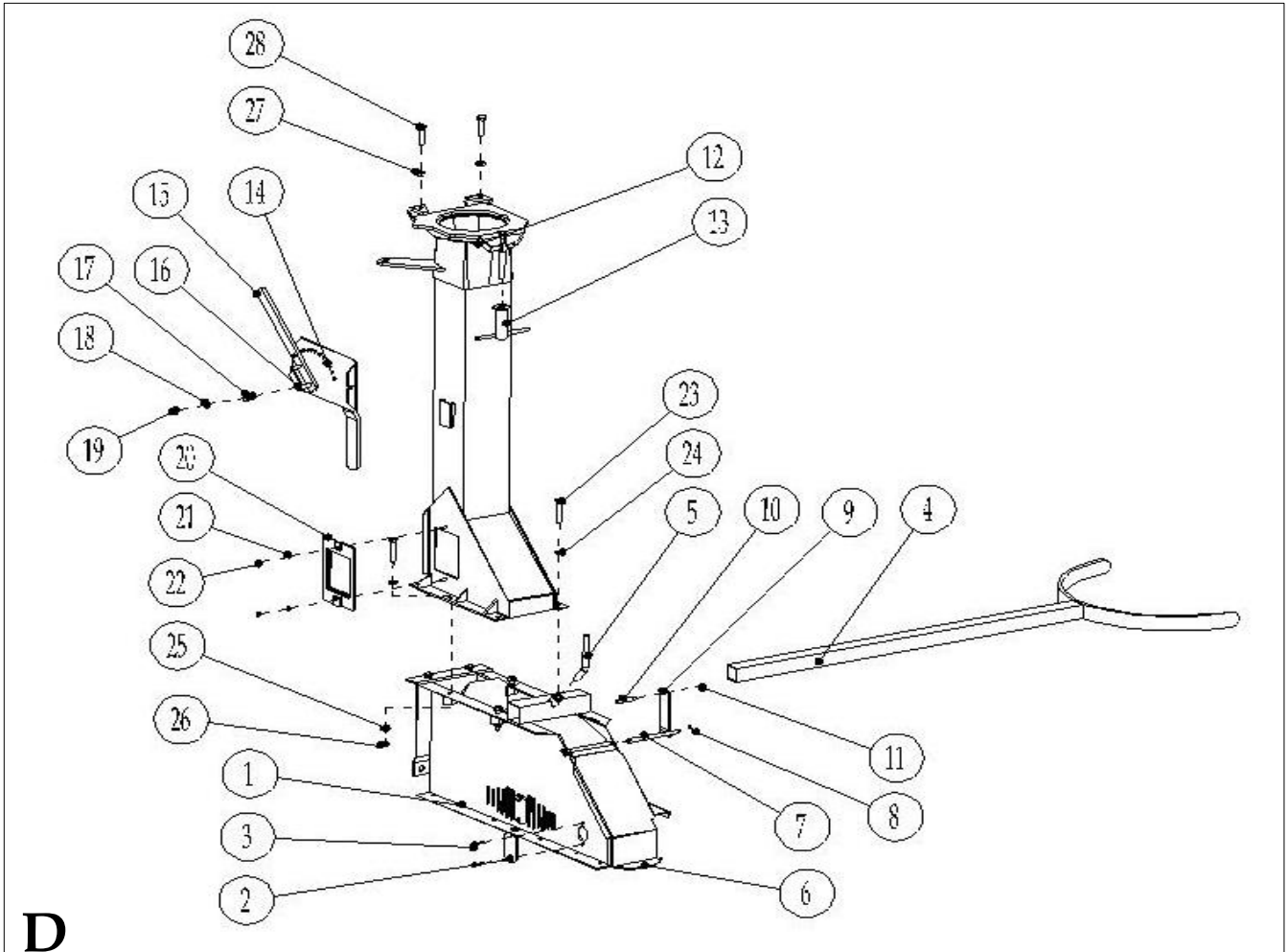
		ENGLISH
FMS 10		MAIZE HARVESTER
No	Referans	Description
B-1	01.01.02.00.000	In Between Cover Complete
B-2	01.01.03.00.000	Drum Lower Chasis Complete
B-3	01.01.04.00.000	Flat Drum Complete
B-4	01.01.05.00.000	Drum Toothed
B-5	01.01.00.00.020	Gear
B-6	01.01.06.00.000	Drum Holder Complete
B-7	M8x30 Civata DIN 601	M8x30 Bolt DIN 601
B-8	01.01.00.00.018	Gear Z46
B-9	6206 2RS Rulman	6206 2RS Bearing
B-10	M25x1.5 Somun DIN 934	M25x1.5 Nut DIN 934
B-11	01.01.00.00.022	Long Front Shaft
B-12	01.01.00.00.026	Drum Pallets
B-13	6206 2RS Rulman	6206 2RS Bearing
B-14	Ø62 İç Segman DIN 472	Ø62 Ring DIN 472
B-15	01.01.06.00.008	Drum Bearing Pipe
B-16	01.01.06.00.009	Spacer
B-17	6206 2RS Rulman	6206 2RS Bearing
B-18	01.01.00.00.027	Washer
B-19	01.01.00.00.031	Ring
B-20	6206 2RS Rulman	6206 2RS Bearing
B-21	M8x30 Civata DIN 601	M8x30 Bolt DIN 601
B-22	M25x1.5 Somun DIN 934	M25x1.5 Nut DIN 934
B-23	01.01.06.00.007	Pin
B-24	100Y.Ø8x30 Yarıklı Pim	Ø8x30 PIN
B-25	01.01.06.00.010	Gear Pipe
B-26	Ø47 İç Segman DIN 472	Ø47 Ring DIN 472
B-27	6204 2RS Rulman	6204 2RS Bearing
B-28	01.01.00.00.011	Gear Z20
B-29	01.01.07.00.000	Front Drum Complete
B-30	Ø20 Dış Segman DIN 471	Ø20 Ring DIN 471
B-31	01.01.00.00.014	Flat Drum Shaft
B-32	6205 2RS Rulman	6205 2RS Bearing
B-33	01.01.00.00.033	Ring
B-34	01.01.00.00.012	Gear Z31
B-35	M12 Pul DIN 125	M12 Washer DIN 125
B-36	M12 Somun DIN 934	M12 Nut DIN 934
B-37	6205 2RS Rulman	6205 2RS Bearing
B-38	01.01.00.00.016	Washer
B-39	01.01.00.00.025	Stem Blades
B-40	M10x30 Civata DIN 601	M10x30 Bolt DIN 601
B-41	M10 Somun DIN 934	M10 Nut DIN 934
B-42	01.01.00.00.030	Nail
B-43	M8x25 Civata DIN 601	M8x25 Bolt DIN 601
B-44	M10x25 İmbus Civata DIN 601	M10x30 Bolt DIN 601
B-45	M10 Somun DIN 934	M10 Nut DIN 934
B-46	01.01.00.00.019	Stopper Pipe
B-47	6206 2RS Rulman	6206 2RS Bearing
B-48	01.01.00.00.023	Spacer Pipe
B-49	01.01.00.00.024	Stopper Middle Pipe
B-50	M8 Somun DIN 934	M8 Nut DIN 934
B-51	01.01.00.00.021	Short Front Shaft
B-52	M12x35 Civata DIN 601	M12x35 Bolt DIN 601
B-53	M8x20 Civata DIN 601	M8x20 Bolt DIN 601
B-54	M8 Somun DIN 934	M8 Nut DIN 934
B-55	01.01.00.00.028	Washer
B-56	100Y.Ø10x30 Yarıklı Pim	Ø10x30 Pin
B-57	01.01.07.00.005	Toothed Metal
B-58	100C.M10x25 FLNS	M10x25 Special Bolt

LOWER FAN



		ENGLISH
FMS 10		MAIZE HARVESTER
No	Referans	
C-1	01.02.03.00.000	Lower Fan Cover Complete
C-2	Ø100 İç Segman DIN 472	Ø100 Ring DIN 472
C-3	100KC.70x100x10 Kece	Ø70xØ100x10 Seal
C-4	01.02.00.00.007	Rear Seal Pipe
C-5	6309 Z Rulman	6309 Z Bearing
C-6	01.02.00.00.006	Conical Washer
C-7	01.02.00.00.001	Small Pulley
C-8	01.02.00.00.004	Shear Bolt
C-9	M8x30 Civata DIN 601	M8x30 Bolt DIN 601
C-10	01.02.00.00.002	Pulley Nut
C-11	100KC.60x80x10 Kece	Ø60xØ80x10 Seal
C-12	Ø80 İç Segman DIN 472	Ø80 Ring DIN 472
C-13	01.02.00.00.011	Fan Middle
C-14	01.02.01.00.001	Fan Shaft
C-15	9x14x105 mm Kama	9x14x105 mm Key
C-16	9x14x80 mm Kama	9x14x80 mm Key
C-17	01.02.02.00.001	Flywheel
C-18	01.02.01.00.003	Front Seal Pipe
C-19	01.02.01.00.004	Spring Washer
C-20	6309 Z Rulman	6309 Z Bearing
C-21	01.02.01.00.006	Pin Pipe
C-22	01.02.01.00.005	Coupling Pin
C-23	01.02.02.00.004	Counter Blade
C-24	M16x60 Civata DIN 601	M16x60 Bolt DIN 601
C-25	M16 Somun DIN 934	M16 Nut DIN 934
C-26	M16x60 Civata DIN 601	M16x60 Bolt DIN 601
C-27	M16 Somun DIN 934	M16 Nut DIN 934
C-28	01.02.03.01.000	Stand Jack
C-29	M10x50 Civata DIN 601	M10x50 Bolt DIN 601
C-30	M10 Somun DIN 934	M10 Nut DIN 934
C-31	01.02.00.00.012	Pin
C-32	100KP.Ø4x30 Gupilya	Ø4x30 Pin
C-33	01.02.02.01.000	Pallet
C-34	M10x35 Civata DIN 601	M10x35 Bolt DIN 601
C-35	M10 Somun DIN 934	M10 Nut DIN 934
C-36	Ø80xØ63x1 Pul DIN 988	Ø80xØ63x1 mm Spacer DIN 988
C-37	01.02.00.00.008	Fixed Knife
C-38	01.02.00.00.009	Scraper
C-39	M10 Somun DIN 934	M10 Nut DIN 934
C-40	M10 Pul DIN 125	M10 Washer DIN 125
C-41	100C.M10x30 MBDK	M10x30 Special Bolt
C-42	01.02.00.00.003	Pulley Washer

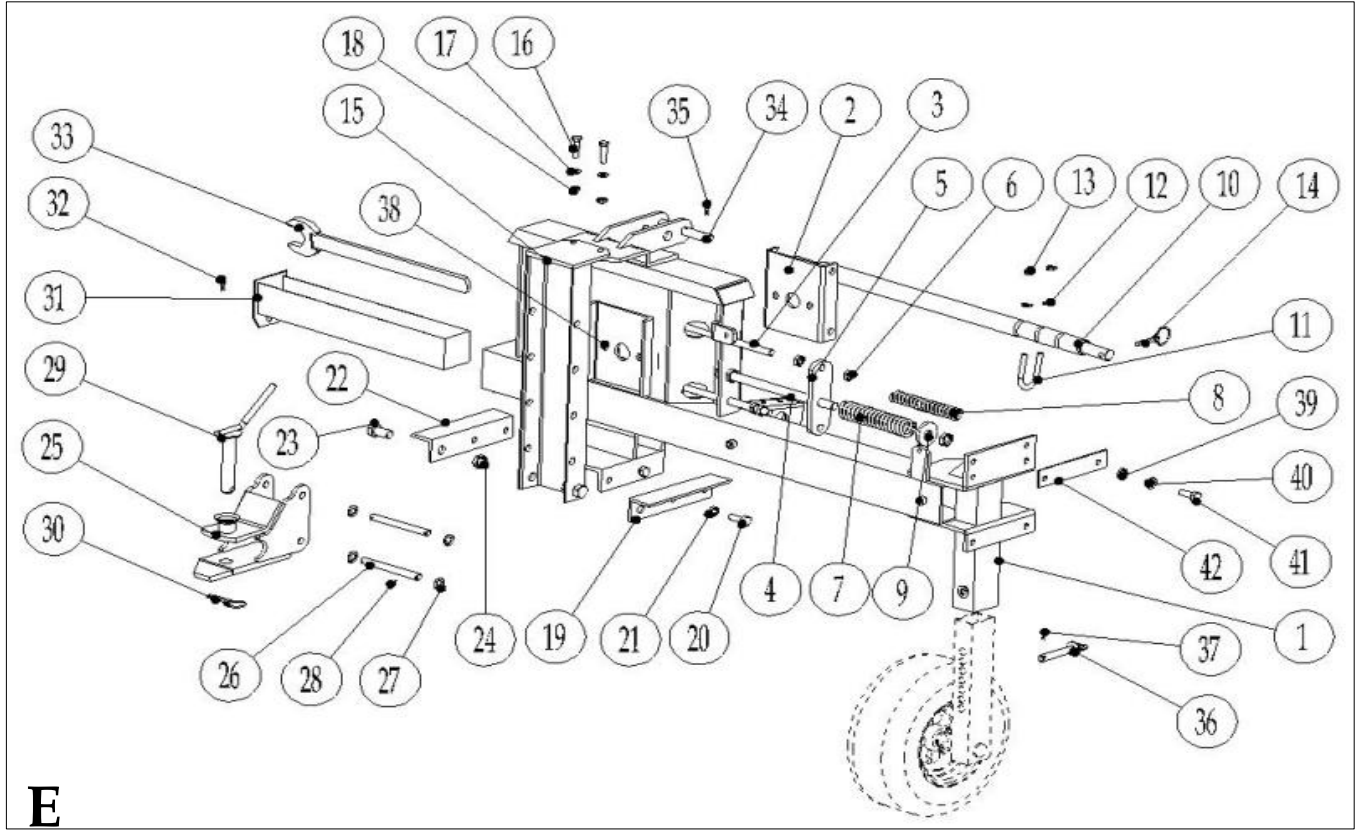
UPPER FAN



D

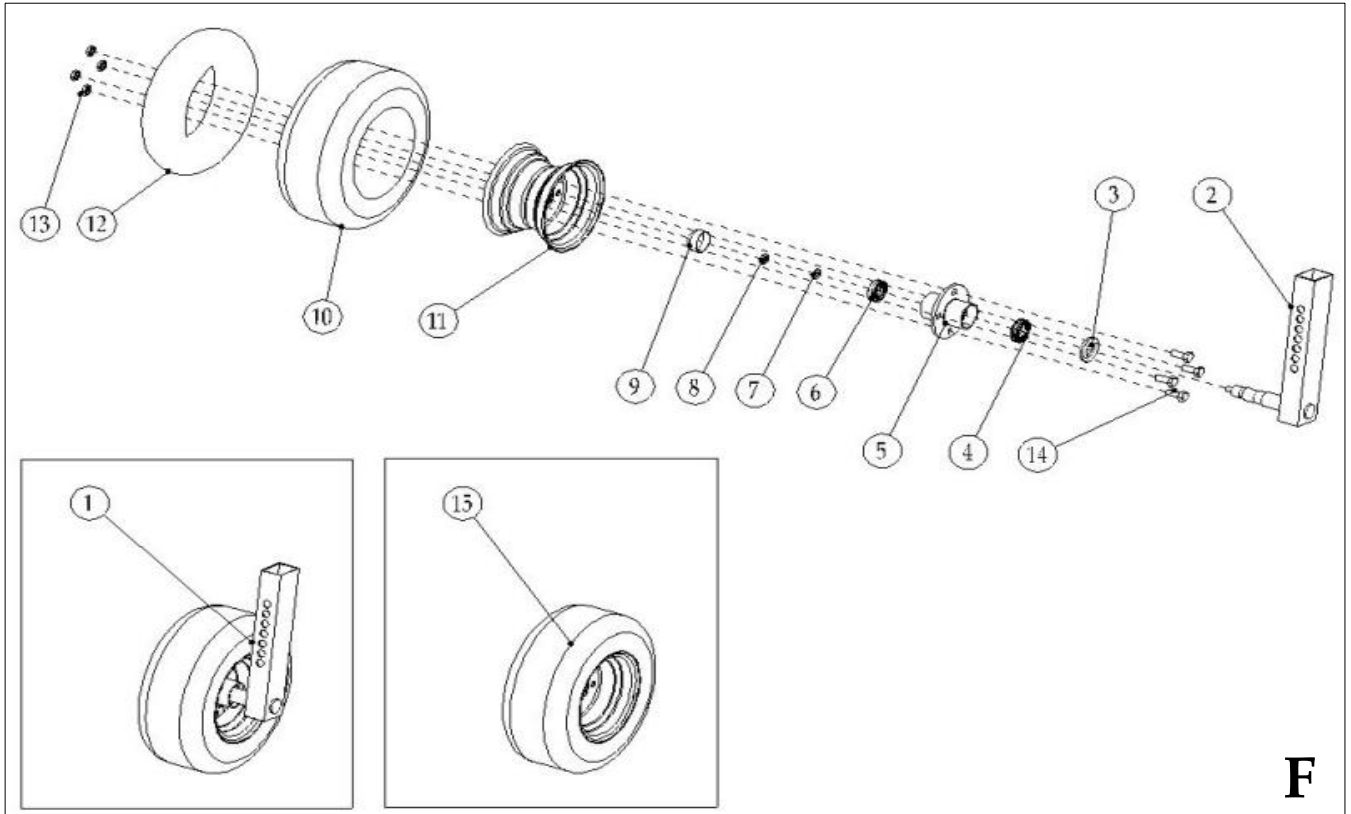
		ENGLISH
FMS 10		MAIZE HARVESTER
No	Referans	
D-1	01.02.04.00.000	Fan Upper Complete
D-2	01.02.04.00.006	Cover
D-3	M6x10 Civata DIN 601	M6x10 Bolt DIN 601
D-4	01.02.04.01.000	Stem Arm
D-5	01.02.04.01.003	Tightening Shaft
D-6	01.02.04.02.000	Fan Upper Cover Complete
D-7	01.02.04.00.007	Pin
D-8	100KP.Ø4x30 Gupilya	Ø4x30 Pin
D-9	01.02.04.00.008	Safety Lock
D-10	01.02.04.00.011	Holder
D-11	M8 Somun DIN 934	M8 Nut DIN 934
D-12	01.03.01.00.000	Lower Chute Complete
D-13	01.03.01.01.005	Upper Chute Nut
D-14	01.03.03.00.000	Cable Control Kit
D-15	01.03.03.01.000	Adjustment Arm
D-16	M10x50 Civata DIN 601	M10x50 Bolt DIN 601
D-17	01.03.03.00.001	Spring
D-18	M10 Pul DIN 125	M10 Washer DIN 125
D-19	M10 Somun DIN 934	M10 Nut DIN 934
D-20	01.03.01.00.008	Cleaning Box Cover
D-21	M8 Pul DIN 125	M8 Washer DIN 125
D-22	M8 Somun DIN 934	M8 Nut DIN 934
D-23	M10x60 Civata DIN 601	M10x60 Bolt DIN 601
D-24	M10 Pul DIN 125	M10 Washer DIN 125
D-25	M16 Pul DIN 125	M16 Washer DIN 125
D-26	M10 Somun DIN 934	M10 Nut DIN 934
D-27	M12 Somun DIN 934	M12 Nut DIN 934
D-28	M12x45 Civata DIN 601	M12x45 Bolt DIN 601

CHASSIS



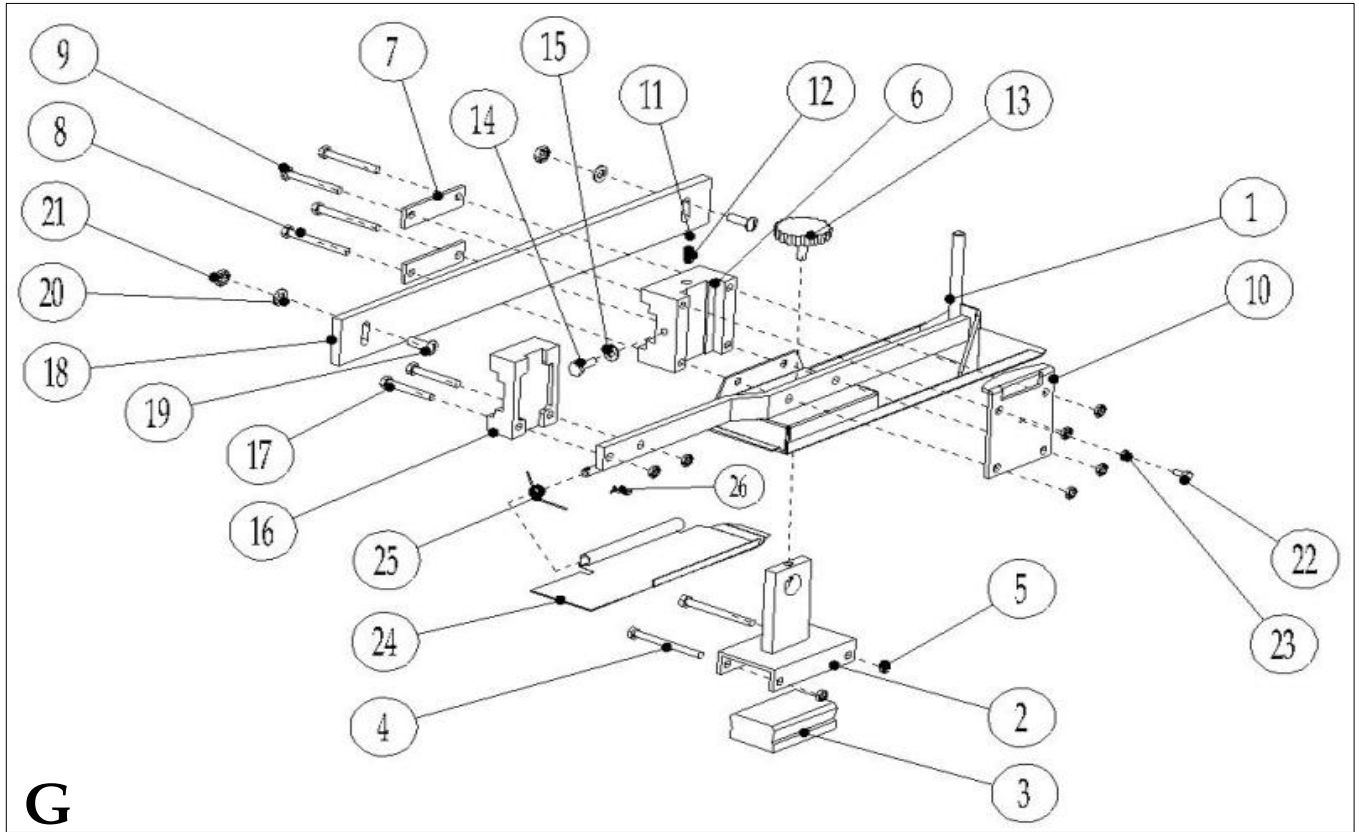
		ENGLISH
FMS 10		MAIZE HARVESTER
No	Referans	
E-1	01.04.01.00.000	Chasis Complete
E-2	01.04.01.04.001	Skid
E-3	01.04.00.00.003	Tensioning Shaft
E-4	01.04.00.00.004	Middle Tensioning Shaft
E-5	01.04.00.00.008	Tensioning Flat Metal
E-6	M16 Somun DIN 934	M16 Nut DIN 934
E-7	01.04.01.00.024	Spring
E-8	01.04.01.00.025	Spring
E-9	01.04.00.00.009	Tensioning Washer
E-10	01.04.00.00.001	Hitching Shaft
E-11	01.04.00.00.005	M12 Connector
E-12	M12 Pul DIN 125	M12 Washer DIN 125
E-13	M12 Somun DIN 934	M12 Nut DIN 934
E-14	100Y.Ø10 Yayli	Ø10 King Pin
E-15	01.04.01.06.000	Trailer Hitch Complete
E-16	M12x40 Civata DIN 601	M12x40 Bolt DIN 601
E-17	M12 Pul DIN 125	M12 Washer DIN 125
E-18	M12 Somun DIN 934	M12 Nut DIN 934
E-19	01.04.01.00.017	Angled Metal Right
E-20	M14x40 Civata DIN 601	M14x40 Bolt DIN 601
E-21	M14 Somun DIN 934	M14 Nut DIN 934
E-22	01.04.01.00.016	Angled Metal Left
E-23	M20x40 Civata DIN 601	M20x40 Bolt DIN 601
E-24	M20 Somun DIN 934	M20 Nut DIN 934
E-25	01.04.01.08.000	Trailer Hitch
E-26	01.04.00.00.007	Hitch Pin
E-27	M16 Pul DIN 125	M16 Washer DIN 125
E-28	100KP.Ø4x40 Gupilya	Pin
E-29	01.04.01.07.000	Trailer Hitch Pin
E-30	100Y.Ø10 Yayli	Ø10 Spring Pin
E-31	01.04.01.03.000	Drawer Complete
E-32	100F.Ø5 FRKT Firkete	Pin
E-33	01.04.01.05.000	Adjustment Tool
E-34	01.04.00.00.002	Upper Drawing pin
E-35	100F.Ø5 FRKT Firkete	Pin
E-36	01.05.02.00.000	Adjustment Pin Complete
E-37	100KP.Ø4x40 Gupilya	Pin
E-38	01.04.01.04.002	Rear Skid
E-39	M12 Somun DIN 934	M12 Nut DIN 934
E-40	M12 Pul DIN 125	M12 Washer DIN 125
E-41	M12x40 Civata DIN 601	M12x40 Bolt DIN 601
E-42	01.04.00.00.006	Chasis Connection Part

TYRE



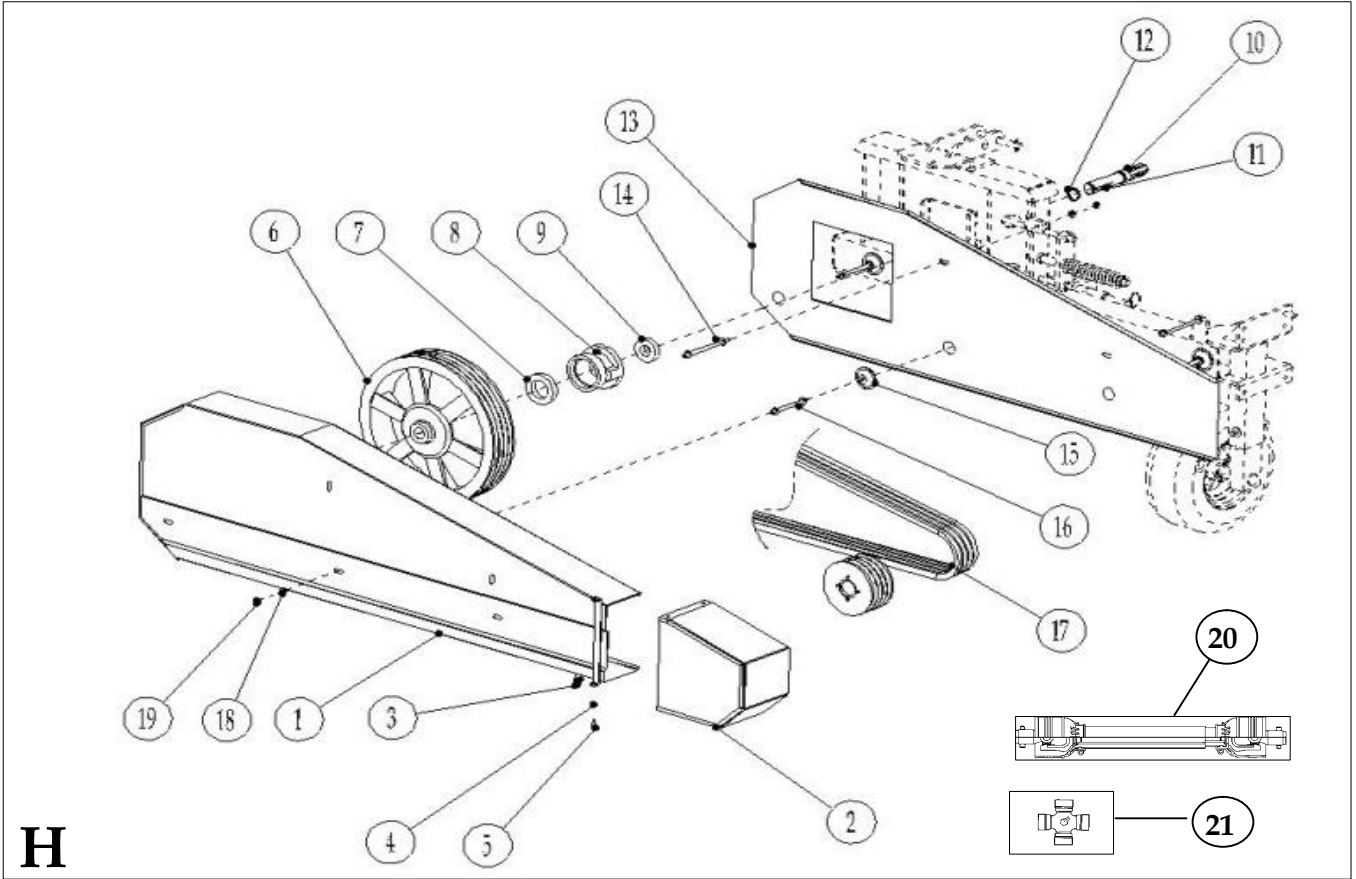
		ENGLISH
FMS 10		MAIZE HARVESTER
No	Referans	
F-1	01.05.00.00.000	Tyre Group Complete
F-2	01.05.00.00.001	Tyre Profile Complete
F-3	100KC.35x55x10 Kece	Ø35xØ55x10 Seal
F-4	6006 Rulman	6006 Bearing
F-5	01.05.01.00.000	Hub
F-6	6205 Rulman	6205 Bearing
F-7	M12 Pul DIN 125	M12 Washer DIN 125
F-8	M12 Somun DIN 934	M12 Nut DIN 934
F-9	01.05.00.00.002	Dust Preventer
F-10	100L.16.5x6.5	16.5 x 6.5 - 8 FM Tyre
F-11	100J.16.5x6.5x8J	Rim 16.5 x 6.5 x 8J
F-12	01.05.00.00.004	Inner Tube 400 x 8 S
F-13	M14 Somun DIN 934	M14 Nut DIN 934
F-14	M14x35 Civata DIN 601	M14x35 Bolt DIN 601
F-15	100L.16x6.5	16 x 6.5 Tyre Complete

GRINDER



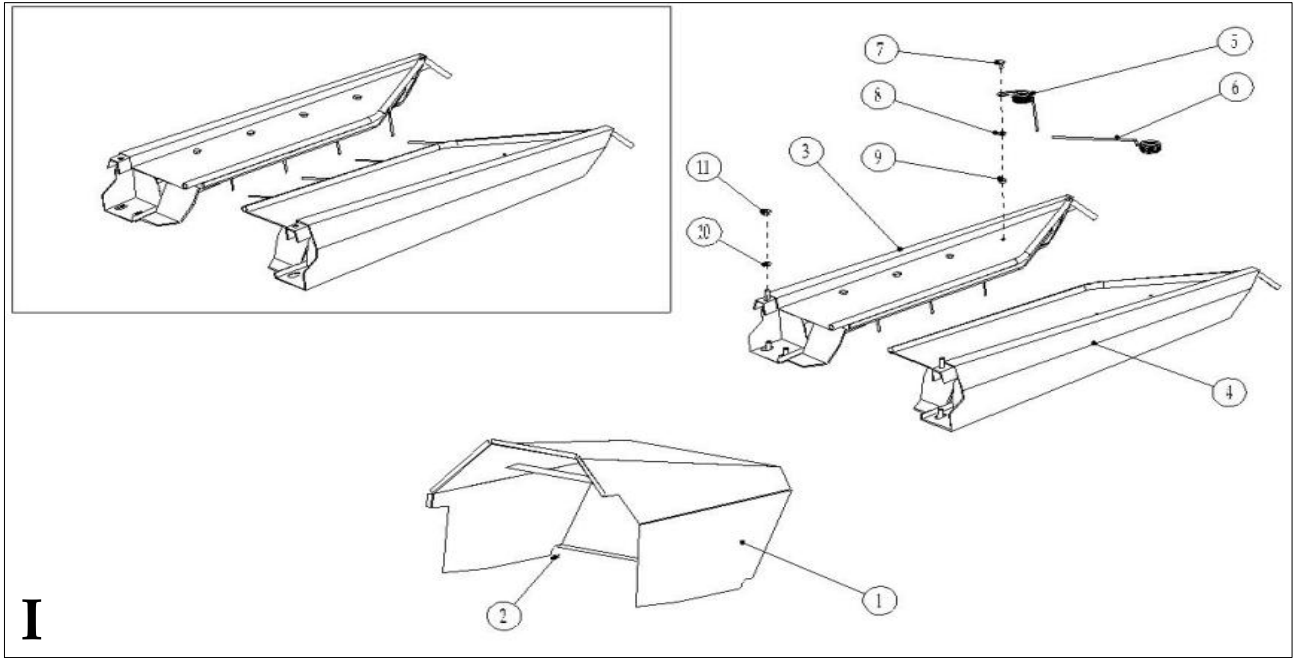
		ENGLISH
FMS 10		MAIZE HARVESTER
No	Referans	
G-1	01.02.05.01.000	Body Metal Complete
G-2	01.02.05.02.000	Grinding Stone Holder Complete
G-3	01.02.05.00.009	Grinding Stone
G-4	M8x90 Civata DIN 601	M8x90 Bolt DIN 601
G-5	M8 Somun DIN 934	M8 Nut DIN 934
G-6	01.02.05.00.002	Rear Casting
G-7	01.02.05.00.006	Lower Flat Metal
G-8	M8x80 Civata DIN 601	M8x80 Bolt DIN 601
G-9	M8x70 Civata DIN 601	M8x70 Bolt DIN 601
G-10	01.02.05.00.004	Upper Metal
G-11	01.02.05.00.016	Ø8 Ball
G-12	01.02.05.00.007	Spring
G-13	01.02.05.00.005	Holder
G-14	M10x20 Civata DIN 601	M10x20 Bolt DIN 601
G-15	M10 Pul DIN 125	M10 Washer DIN 125
G-16	01.02.05.00.001	Front Casting
G-17	M8x60 Civata DIN 601	M8x60 Bolt DIN 601
G-18	01.02.05.00.008	Skid
G-19	100C.M10x30 MBDK	M10x30 Special Bolt
G-20	M10 Pul DIN 125	M10 Washer DIN 125
G-21	M10 Somun DIN 934	M10 Nut DIN 934
G-22	M6x15 Civata DIN 601	M6x15 Bolt DIN 601
G-23	M6 Pul DIN 125	M6 Washer DIN 125
G-24	01.02.05.00.015	Control Cover
G-25	01.02.05.00.014	Cover Spring
G-26	100KP.Ø4x30 Gupilya	Pin

BELT COVER



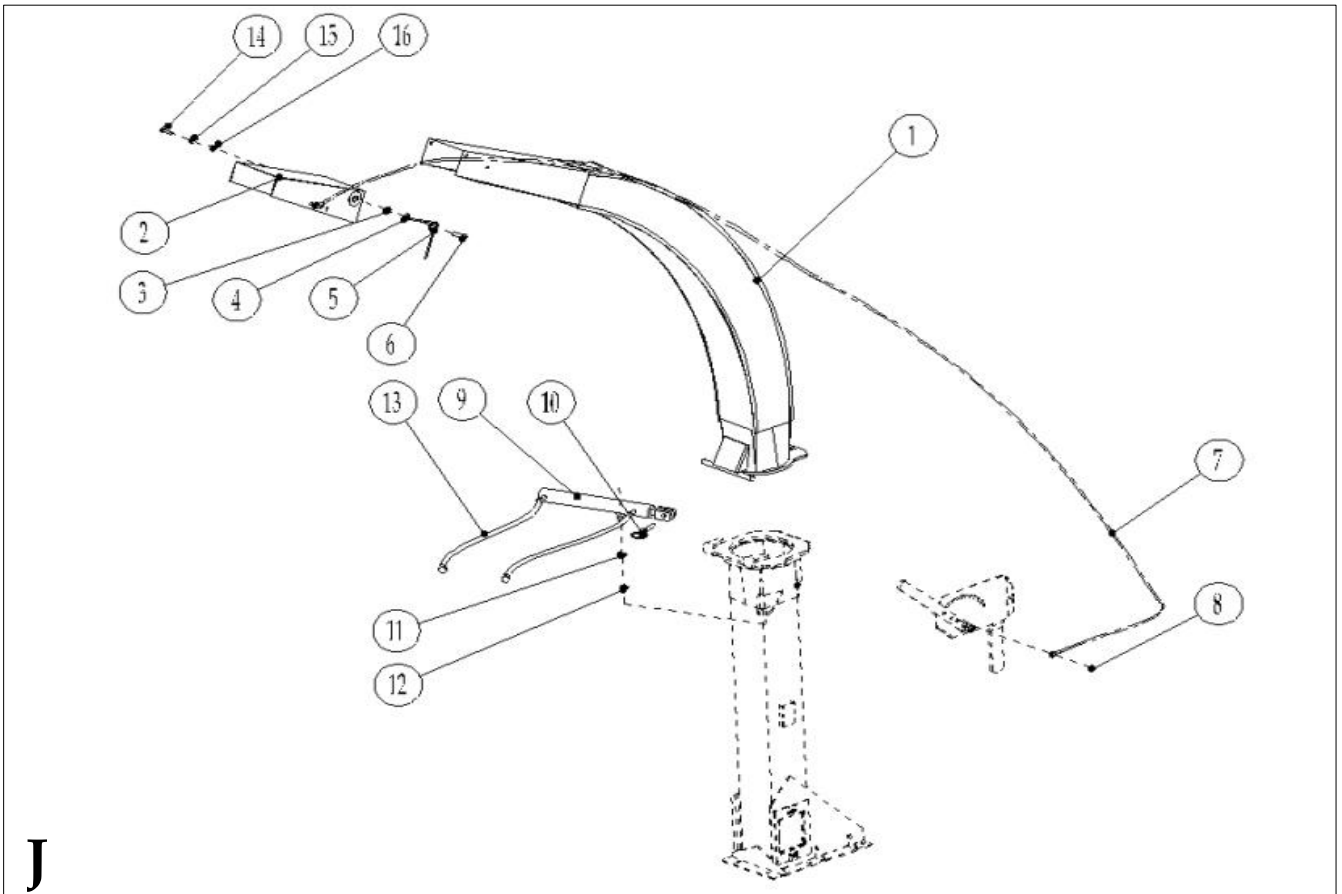
		ENGLISH
FMS 10		MAIZE HARVESTER
No	Referans	
H-1	01.06.01.00.000	Out Cover Complete
H-2	01.06.02.00.000	Belt Cover
H-3	01.06.00.00.002	Spring
H-4	M8x30 Civata DIN 601	M8x30 Bolt DIN 601
H-5	M8 Somun DIN 934	M8 Nut DIN 934
H-6	01.04.02.00.003	Pulley
H-7	6012 Rulman	6012 Bearing
H-8	01.04.02.00.002	Pulley Skid Cover
H-9	6207 Rulman	6207 Bearing
H-10	01.04.02.00.001	Main Shaft
H-11	8x7x70 mm Kama	8x7x70 mm Key
H-12	Ø35 Dış Segman DIN 471	Ø35 Ring DIN 471
H-13	01.06.00.00.001	Inner Cover
H-14	01.06.00.00.004	Long Cover Threaded Shaft
H-15	01.06.00.00.005	Cover Holder
H-16	01.06.00.00.003	Short Cover Threaded Shaft
H-17	17x3750 V Kayış	17x3750 V Belt
H-18	M10 Pul DIN 125	M10 Washer DIN 125
H-19	M10 Somun DIN 934	M10 Nut DIN 934
H-20	PTO Shaft	PTO Shaft

GUIDE



FMS 10		ENGLISH
Referans		MAIZE HARVESTER
I-1	01.07.00.00.000	Front Group Cover
I-2	100KP.Ø4x40 Gupilya	Pin
I-3	01.09.01.00.000R	Right Guide Complete
I-4	01.09.01.00.000L	Left Guide Complete
I-5	01.09.00.00.001R	Right Guide Spring
I-6	01.09.00.00.001L	Left Guide Spring
I-7	M8x30 Civata DIN 601	M8x30 Bolt DIN 601
I-8	M8 Pul DIN 125	M8 Washer DIN 125
I-9	M8 Somun DIN 934	M8 Nut DIN 934
I-10	M12 Pul DIN 125	M12 Washer DIN 125
I-11	M12 Somun DIN 934	M12 Nut DIN 934

CHUTE



		ENGLISH
FMS 10		MAIZE HARVESTER
No	Referans	
J-1	01.03.02.00.000	Upper Chute Complete
J-2	01.03.02.01.000	Flap
J-3	M10 Somun DIN 934	M10 Nut DIN 934
J-4	M10 Pul DIN 125	M10 Washer DIN 125
J-5	01.03.00.00.001	Spring
J-6	M10x40 Civata DIN 601	M10x40 Bolt DIN 601
J-7	100SP.SPRL MS10	Control Cable
J-8	M8 Somun DIN 934	M8 Nut DIN 934
J-9	HDRLK KMND 04	Piston
J-10	100Y.Ø10 Yayli	Pin
J-11	M12 Pul DIN 125	M12 Washer DIN 125
J-12	M12 Somun DIN 934	M12 Nut DIN 934
J-13	HDRLK KMND 10	Hydraulic Hose
J-14	M10x30 Civata DIN 601	M10x30 Bolt DIN 601
J-15	M10 Pul DIN 125	M10 Washer DIN 125
J-16	M10 Somun DIN 934	M10 Nut DIN 934