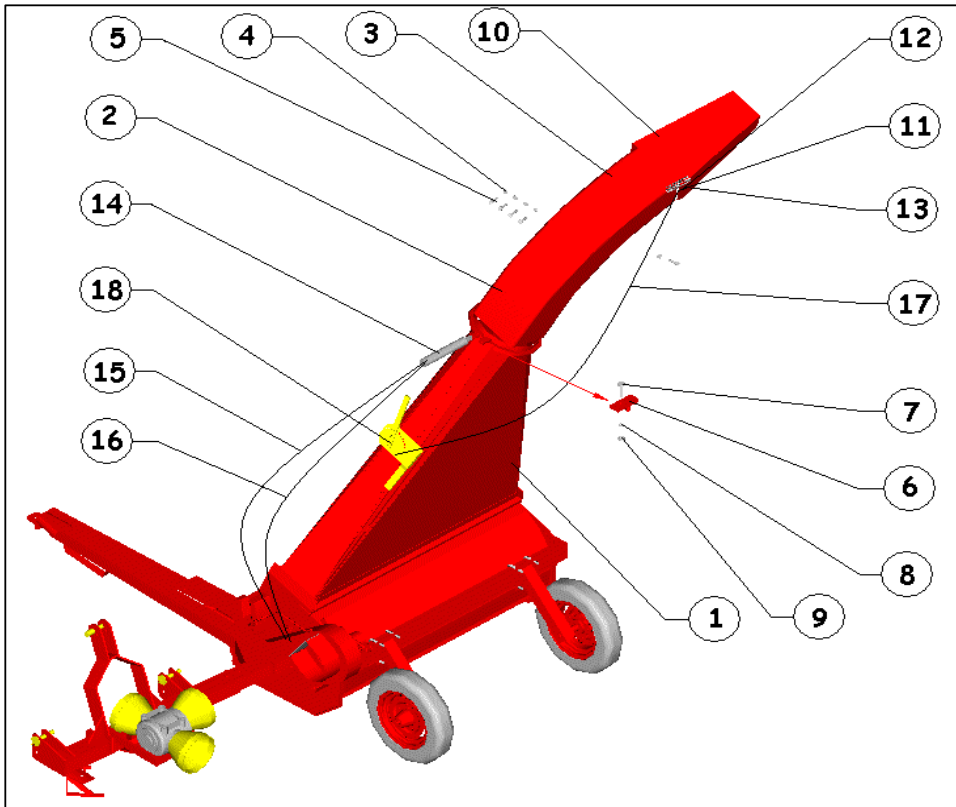
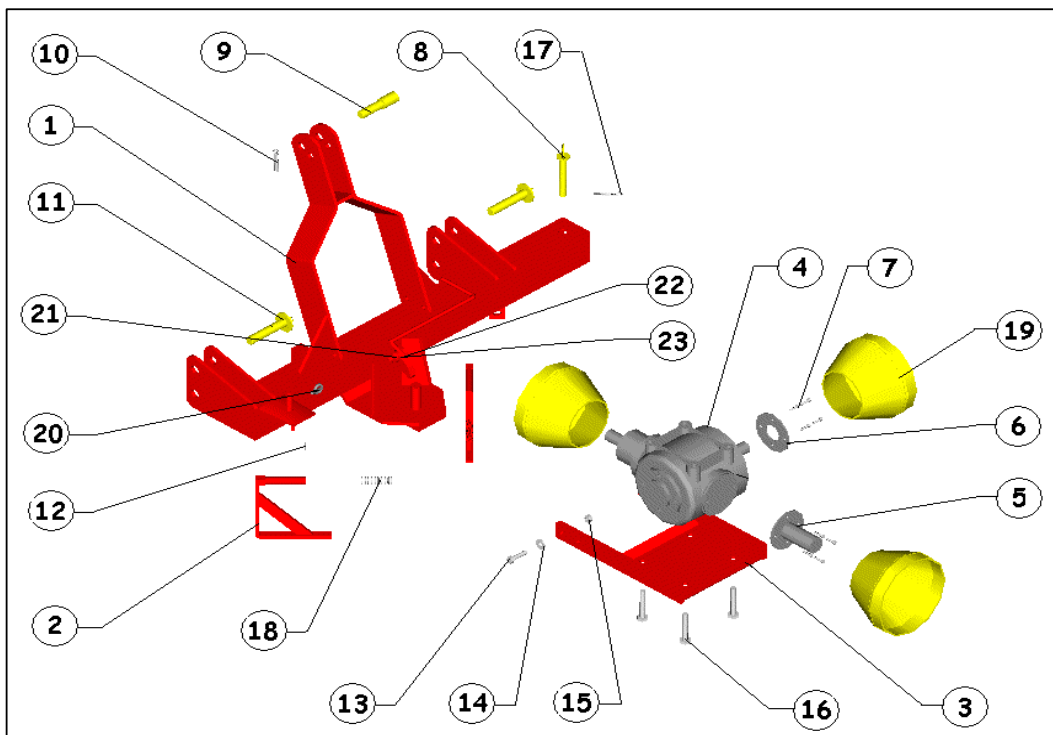


## FORAGE HARVESTER COMPLETE



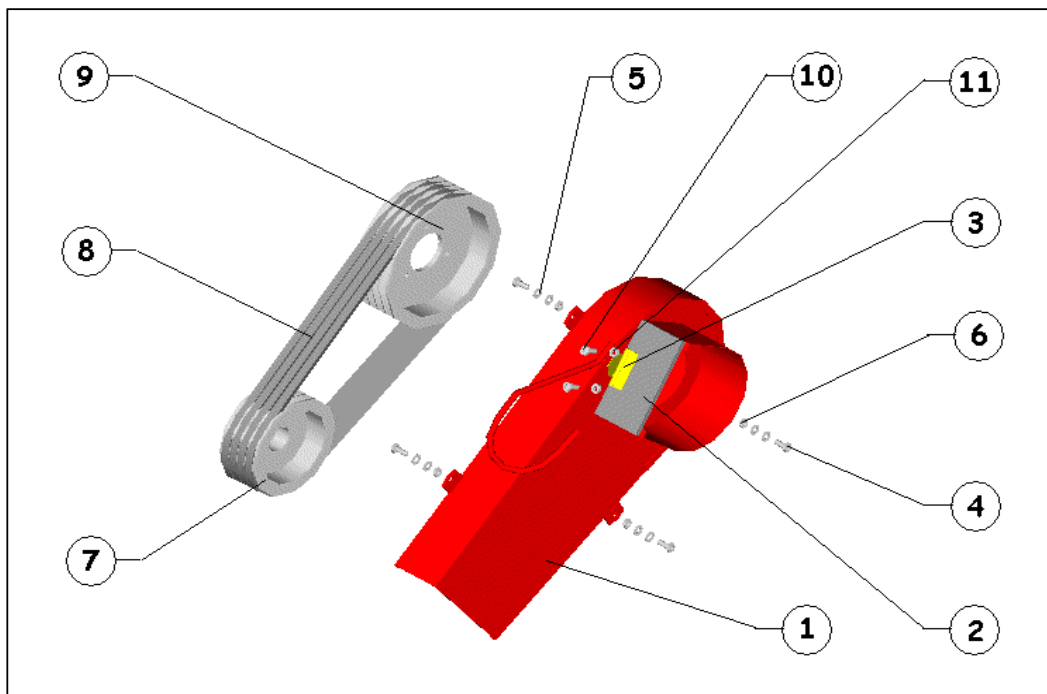
Pos.	Qty.	Description	Reference
1	1	Lower Chute	02.03.01.00.000
2	1	Chute	02.03.02.00.000
3	1	Extension (500 mm)	02.03.02.01.000
4	5	Bolt M6x20 8.8	DIN 601
5	5	Nut M6	DIN 934
6	1	Chute Lock	02.03.02.01.002
7	1	Bolt M10x35 8.8	DIN 601
8	1	Washer M10	DIN 125
9	1	Nut M10	DIN 934
10	1	Flap	02.03.02.03.001
11	1	Flap Spring	02.00.00.00.008
12	2	Bolt M10x35 8.8	DIN 601
13	2	Nut M10	DIN 934
14	1	Piston	HDRLK.KMND 34
15	1	Hydraulic Hose 4.1 mt	HDRLK.KMND 09
16	1	Hydraulic Hose 4.6 mt	HDRLK.KMND 08
17	1	Wire Rope	100SP.SPRL 1500
18	4	Bolt M10	DIN 934

## FORAGE HARVESTER CHASIS



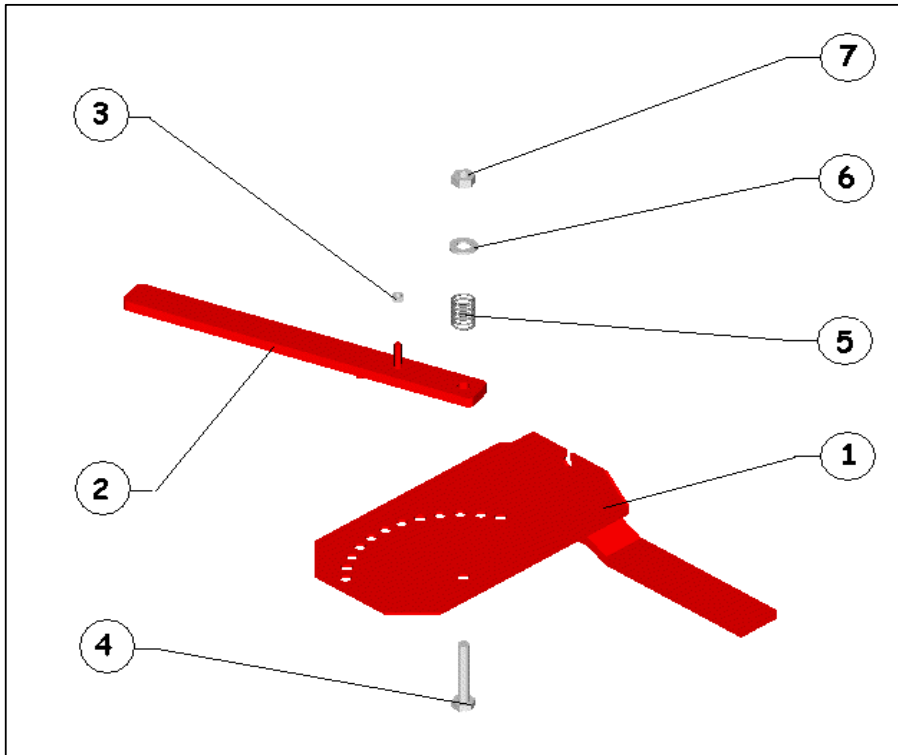
Pos.	Qty.	Description	Reference
1	1	Chassis "Complete"	02.06.00.00.001
2	2	Support	02.06.02.00.000
3	1	Gearbox Plate	02.06.04.00.000
4	1	Gearbox	76 T 1225200
5	1	Gearbox Cover Back	
6	1	Gearbox Cover Side	
7	12	Bolt M8x25 8.8	DIN 601
8	1	Linkage Pin	02.06.03.00.000
9	1	Upper Pin	02.06.00.00.009
10	1	Gupilya Ø5	
11	2	Lower Pin	
12	2	Slit Pin Ø5x30	DIN 1481
13	4	Bolt M12x40 8.8	DIN 601
14	4	Washer M12	DIN 125
15	4	Nut M12	DIN 934
16	4	Bolt M16x40 8.8	DIN 601
17	1	Ø4x40	DIN 94
18	2	Chassis Support Spring	02.00.00.00.012
19	3	Plastic Gearbox Cover	
20	1	Spring Pin Ø10	
21	1	Linkage Pin	
22	1	Lock Spring	
23	2	Washer	DIN 601

## FORAGE HARVESTER PULLEY



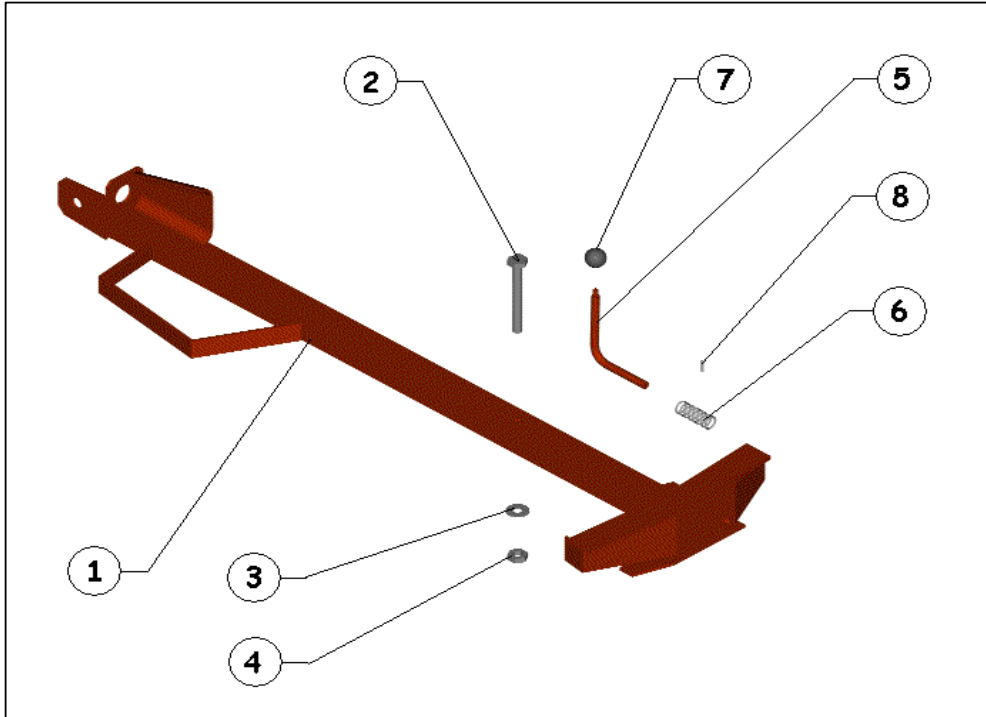
Pos	Qty	Description	Reference
1	1	Belt Guard Complete	02.10.00.00.001
2	1	Plastic cover	
3	1	Sac mentese	
4	4	Bolt M 6 x 25 8.8	DIN 601
5	8	Washer M6	DIN 125
6	4	Nut M6	DIN 934
7	1	Pulley Ø200	02.00.00.00.001
8	4	V Belt 17 x 1375	DIN 7753
9	1	Pulley Ø278	02.09.00.00.001
10	2	Bolt M 6 x 30 8.8	DIN 601
11	2	Nut M6	DIN 934

## FORAGE HARVESTER CABLE CONTROL



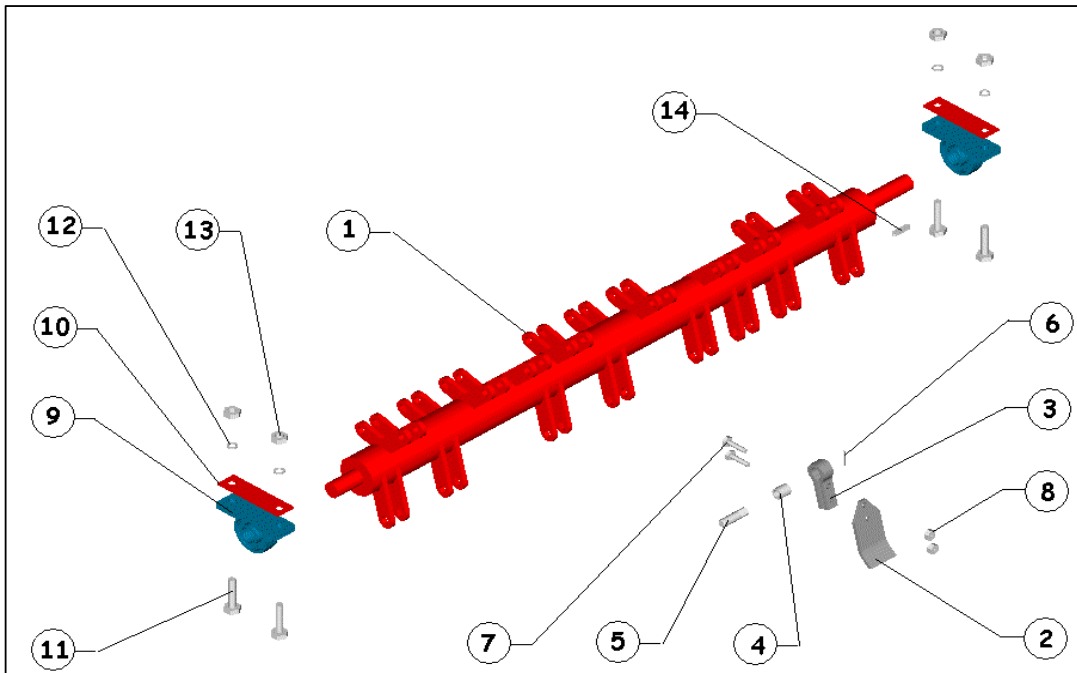
Pos	Qty	Description	Reference
1	1	Complete Cable Control Kit	02.03.02.02.000
2	1	Pulling Arm	02.03.02.02.001
3	1	Nut M8	DIN 934
4	1	Bolt M10 x 50 8.8	DIN 601
5	1	Spring	02.03.02.02.002
6	1	Washer M10	DIN 125
7	1	Nut M10	DIN 934

## FORAGE HARVESTER ADJUSTMENT ARM



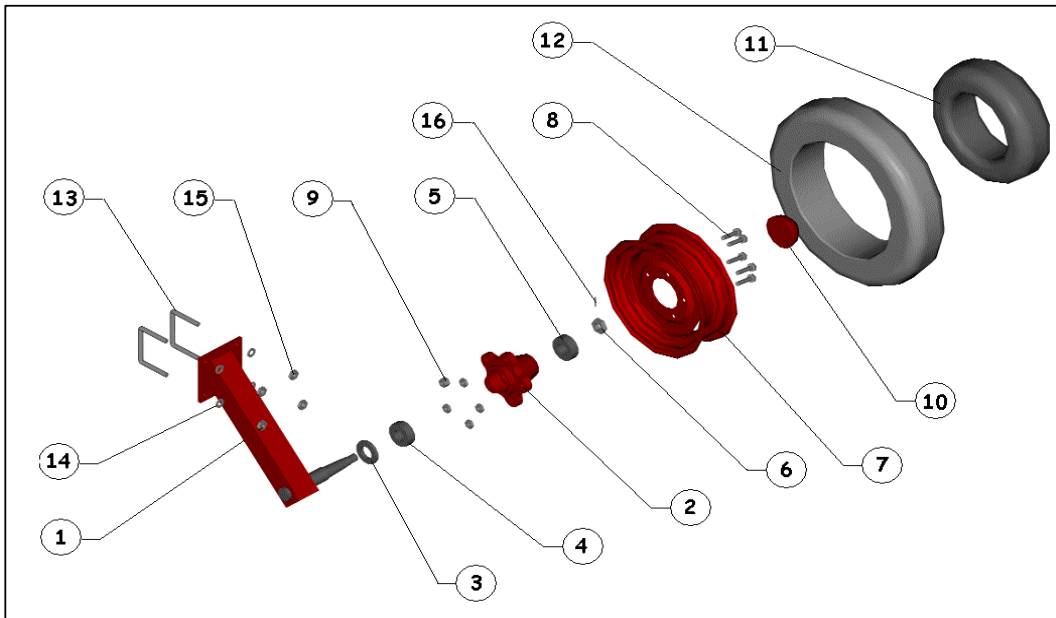
Pos	Qty	Description	Reference
1	1	Adjustment Arm Complete	02.04.00.00.000
2	1	Bolt M18 x 150 8.8	DIN 601
3	1	Washer M18	DIN 125
4	1	Nut With Nylon M18	DIN 934
5	1	Lock Arm	02.04.00.00.014
6	1	Spring	02.04.00.00.009
7	1	Ø50 M10 ball	02.04.00.00.015
8	1	Ø5 x 40 Pin	DIN 1481

## FORAGE HARVESTER ROTOR



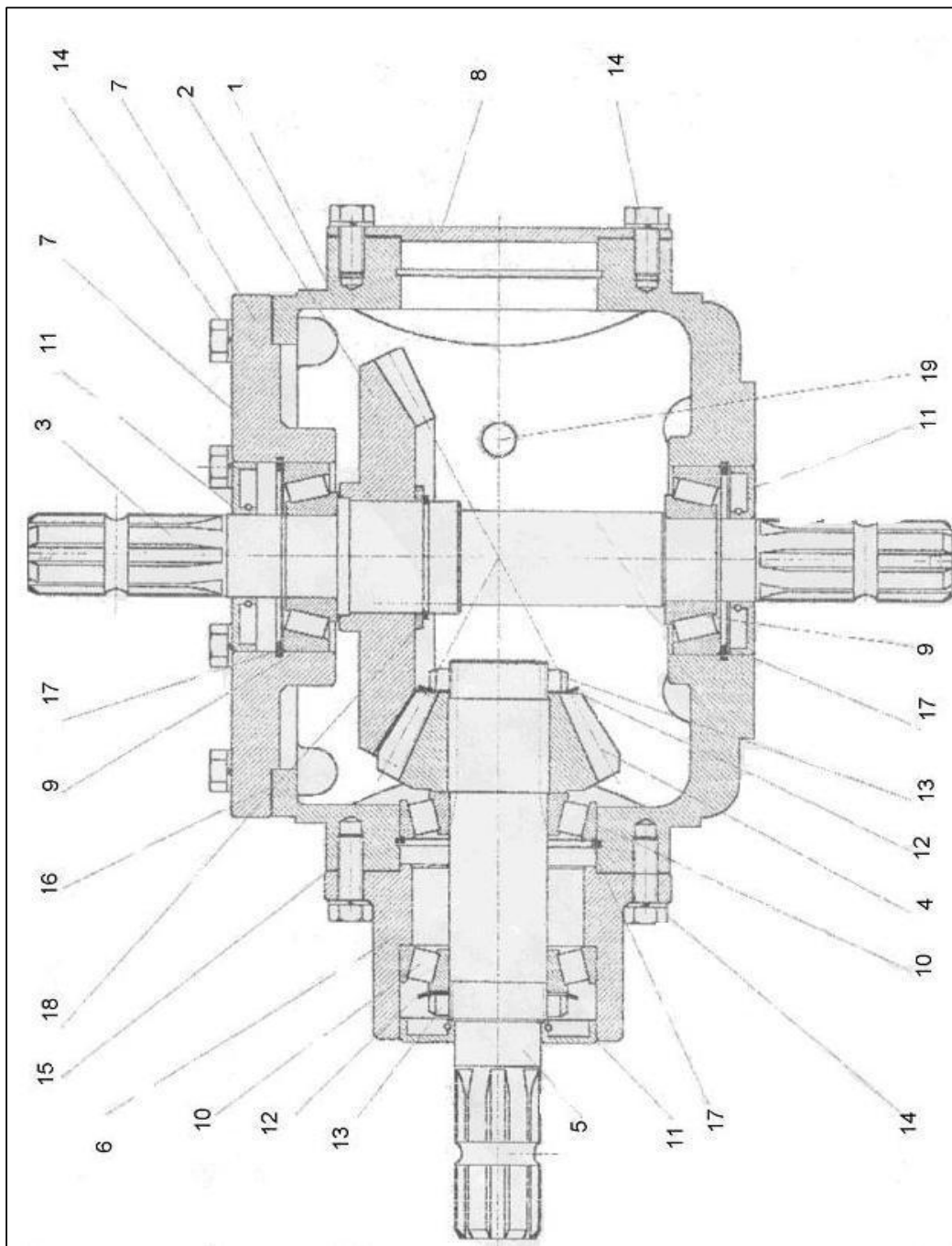
Pos	Qty	Description	Reference
1	1	Rotor Group Complete	02.02.00.00.000
2	24	Knife (fly)	02.02.03.00.001
3	24	Knife clamp	02.02.03.00.002
4	24	Knife Pipe	02.02.03.00.003
5	24	Connector Pin	02.02.03.00.004
6	24	Ø4 x 40 pin	DIN 94
7	48	Bolt M10 x 45 8.8	DIN 601
8	48	Nut With Nylon M10	DIN 934
9	2	Bearing UCF 208	UCP 208
10	2	Bearing Support	02.00.00.00.005
11	4	Bolt M12 x 50 8.8	DIN 601
12	4	Washer M12	DIN 125
13	4	Nut With Nylon M12	DIN 934
14	1	Splint Pin 7 x 8 x 70 mm	DIN 6886

## FORAGE HARVESTER TYRE



Pos	Qty	Description	Referance
1	2	Complete Wheel Group	02.08.00.00.000
2	2	Hub	02.08.00.00.001
3	2	Oil Seal	02.08.00.00.003
4	2	Bearing	30208 A
5	2	Bearing	30205 A
6	2	Nut 7/8 "	DIN 94
7	2	Rim	DIN 601
8	10	Bolt M12 x 45 8.8	DIN 934
9	10	Nut M12	UCP 208
10	2	Cover	02.08.00.00.002
11	2	Inner Tyre	DIN 601
12	2	Tyre	DIN 125
13	4	U Clamp	DIN 934
14	8	Washer M14	DIN 6886
15	8	Nut M14	DIN 934
16	2	Ø4 x 40 Pin	DIN 6886

## FORAGE HARVESTER GEAR

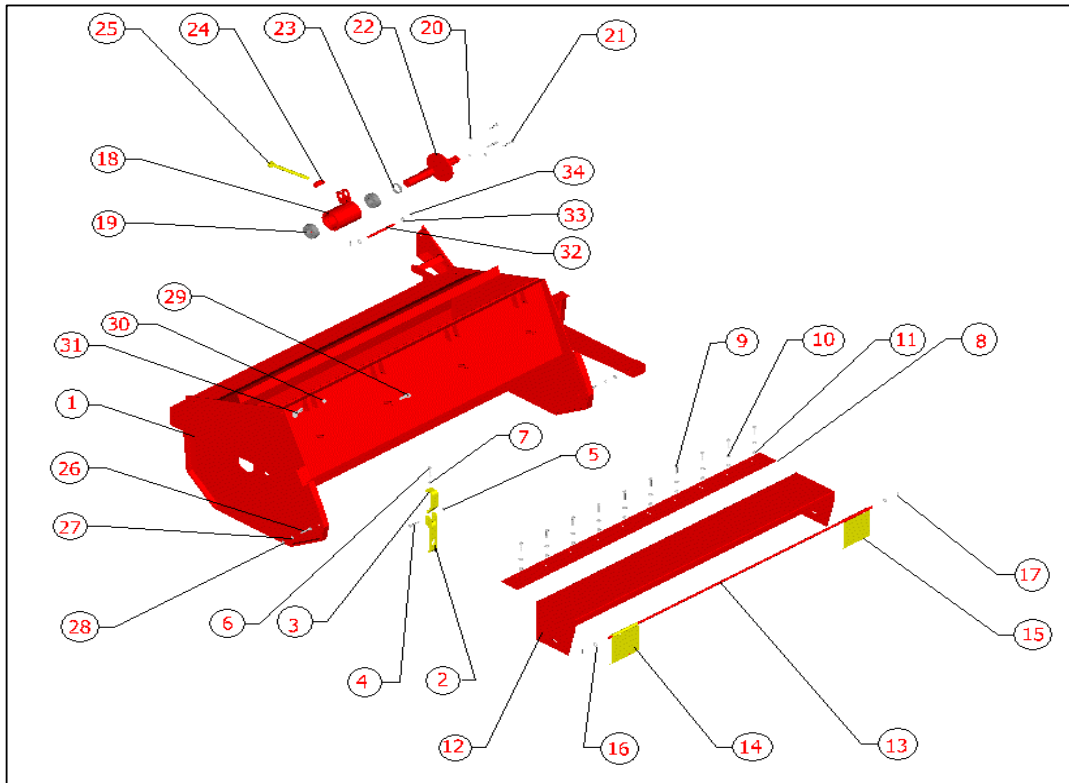


Pos	Qty	Description	Reference
1	1	Housing	76 T 1225200
2	1	Gear (z:29 m:6)	76 T 1225362
3	1	Shaft	76 T 1225463
4	1	Pinion Gear (z:15 m:6)	76 T 1225562
5	1	Pinion Gear Shaft	76 T 1225663



<b>6</b>	1	Complete Pinion Gear Flange	76 T 1225761
<b>7</b>	1	Flange	76 T 1226061
<b>8</b>	1	Gear Metal Cover	76 T 1116300
<b>9</b>	2	Conical Bearing 30207 A	1930030307
<b>10</b>	2	Conical Bearing 30208 A	1930030208
<b>11</b>	3	Oil Seal (35 x 80 x 10)	1907503580
<b>12</b>	2	Safety Metal M40	1901704000
<b>13</b>	2	Shear Bolt M40 x 1.5	1901804000
<b>14</b>	12	Bolt M10 x 20 8.8	190110810
<b>15</b>	1	Pinion gear Gasket	76 T 1226400
<b>16</b>	1	z:29 Gear Gasket	76 T 1226500
<b>17</b>	3	Inner Ring Ø50 x 2.5	1901508025
<b>18</b>	1	Shaft Ring Ø48 x 1.75	1909404817
<b>19</b>	1	Bolt R3/8"	DIN 601

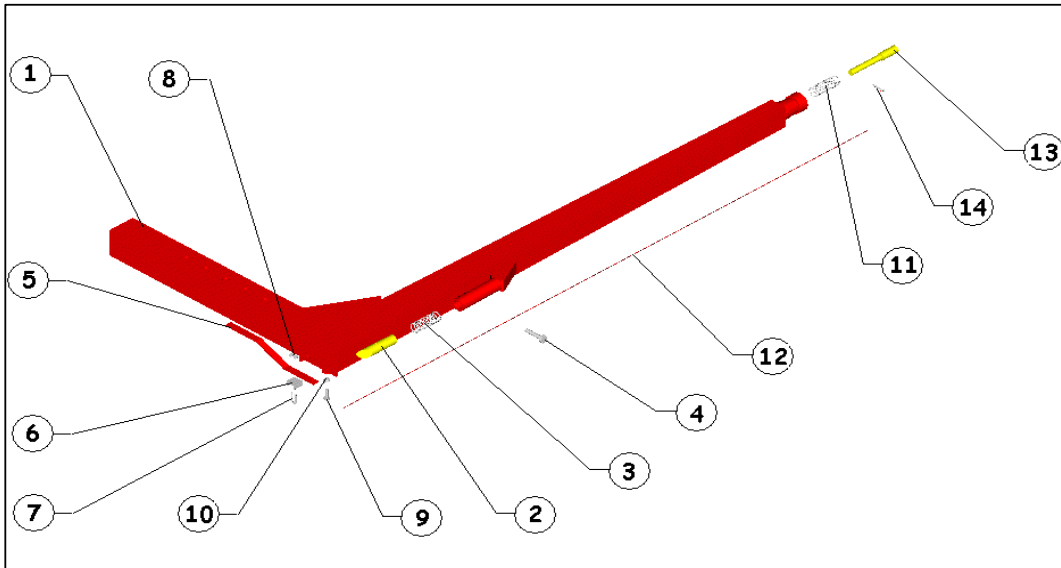
## FORAGE HARVESTER BODY



Pos	Qty	Description	Reference
1	1	Body "Complete"	02.01.00.00.001
2	4	Clasp	02.01.01.01.001
3	4	Upper Lock Arma	02.01.01.00.001
4	4	Bolt M8 x 50 8.8	DIN 601
5	4	Nut M 8	DIN 934
6	4	Bolt M8 x 45 8.8	DIN 601
7	4	Nut M10	DIN 934
8	1	Counter Knife	02.00.00.00.002
9	10	Bolt M8 x 35 8.8	DIN 601
10	20	Washer M8	DIN 125
11	10	Nut M8	DIN 934
12	1	Guard Cover Sheet	02.11.00.00.001
13	1	Guard Rod	02.00.00.00.003
14	1	Guard Narrow	02.11.02.00.001
15	8	Guard Wide	02.11.01.00.001
16	2	Washer M12	DIN 125
17	2	Gupilya Ø4 x 40	DIN 94
18	1	Large Pulley Bearing-House	02.09.01.00.001
19	2	Bearing 6208 Z	DIN 625
20	3	Bolt M10 x 40 8.8	DIN 601
21	3	Nut M 10	DIN 934
22	1	Machined Rod	02.09.01.01.001
23	1	O-ring	DIN 471
24	1	Stretching Nut	02.09.00.00.002
25	1	Stretching gijonu	02.09.00.00.004
26	2	Bolt M10 x 35 8.8	DIN 601
27	2	Washer M10	DIN 125
28	2	Nut M10	DIN 934
29	4	Spring Pin Ø6	
30	4	Nut M8	DIN 934
31	4	Bolt M8 x 60 8.8	DIN 601

<b>32</b>	1	Fixing Pin	02.09.00.00.003
<b>33</b>	2	Washer M12	DIN 125
<b>34</b>	3	Safety pin Ø4 x 40	DIN 94

## FORAGE HARVESTER L-CONNECTOR



Pos	Qty	Description	Reference
1	1	Complete L Connector	02.05.00.00.000
2	1	Lock Pin	02.05.00.00.010
3	1	Lock Pin Spring	02.00.00.00.010
4	1	Bolt M 8 x 30 8.8	DIN 601
5	1	Rope Controller	02.05.00.00.012
6	1	Rope Lock	
7	1	Clamp	
8	2	M 5 Clamp Nut	DIN 934
9	1	Bolt M 8 x 30 8.8	DIN 601
10	1	Nut M 8	DIN 934
11	1	Pin Spring	02.00.00.00.011
12	1	Wire Rope 3 mm x 2 mt	
13	1	Front Pin	02.05.00.00.011
14	1	Ø 5 x 40 Pin	DIN 1481