



# FIMF 1300 FORAGE HARVESTER USER'S MANUAL

**ADRES:** Fimaks Makina A.Ş.  
Bursa yolu 2.km DSİ Karşısı  
Karacabey-BURSA TURKEY  
**TEL:** +90.224.6623743  
**FAX:** +90.224.6623747

**Internet:** [www.fimaks.com](http://www.fimaks.com)  
**E-mail:** [info@fimaks.com](mailto:info@fimaks.com)

## TECHNICAL SPECIFICATIONS

MODEL	: FMF 1300
ROAD POSITION	: 4500 mm
WORK POSITION	: 2500 mm
HEIGHT	: 3150 mm
WEIGHT	: 500 Kg
HARVESTING WIDTH	: 1300 mm
HARVESTING HEIGHT	: 40 mm
HARVESTING CAPACITY	: 16 Tons / hour
POWER REQUIREMENT	: 50 Hp
PTO SPEED	: 540
NUMBER OF SHAFTS	: 2
NUMBER OF KNIVES	: 21
TYRES	: 450x10 6PR
OIL TYPE	: SAE 140

## **TRANSPORTING INSTRUCTIONS**

1. The machine must be protected against shocks and possible damages may occur while loading.
2. The machine must be fixed on the truck against crash and possible damages during transportation
3. Suitable devices must use while unloading the machine.
4. Always comply with local safety and traffic regulations.
5. All safety guards must be fitted during the transport of the harvester. Guards are fitted for the safety of the operator and comply with agricultural safety regulations.

## **ASSEMBLY**

1. If the machine is not delivered assembled, lower chute and upper chute should be assembled.

## **SAFETY DEVICES**

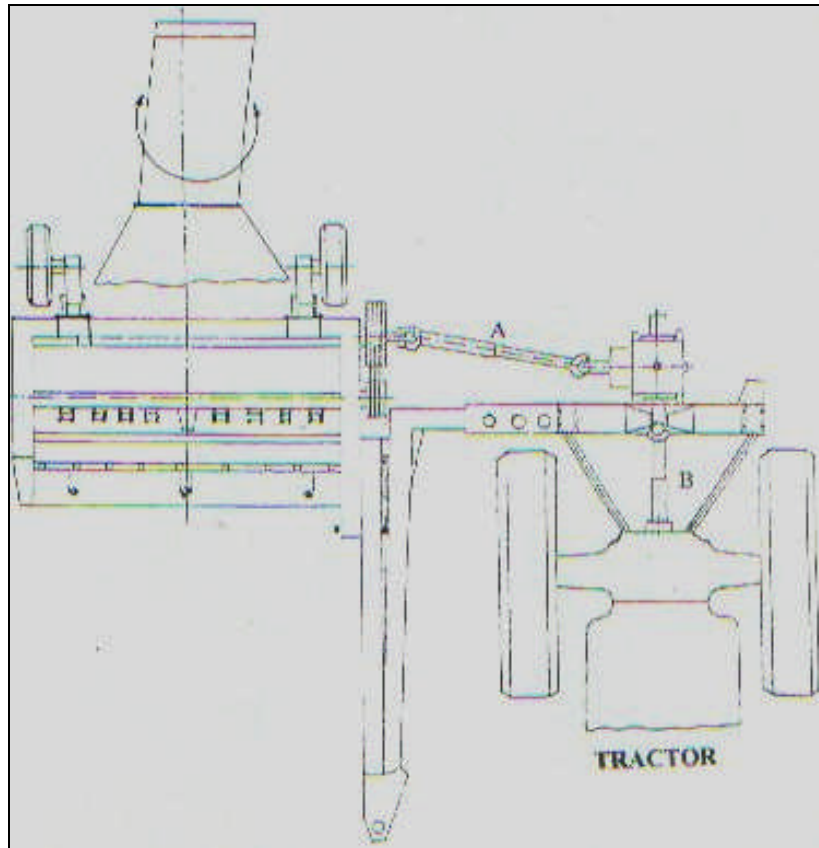
1. Read carefully all the instructions before using the machine.
2. Keep away from the rotating parts and keep people and animals at a safe distance
3. Machine must never be tested on a tractor in an enclosed space because of the danger on poisonous exhaust gas.
4. Read the manual carefully and learn all the functions of the machine before using. Preventing the defects is much easier than repairing.
5. The operator must avoid wearing wearing loose dresses to prevent himself from rotating parts.
6. You should take care not to make sudden stops and sudden acceleration when using the machine.
7. If when operating the machine, an abnormal vibration or change in the noise is noticed, the machine should be stopped immediately and the cause of the problem located.
8. Never remove the safety guards from the machine.
9. The machine must get to road position and the pto shafts must be reengaged before transporting.

10. If you are on a traffic road you should take care of the turning angles and the break ability of the machine. Never drive fast.
11. Whenever you realized an alive around the application area immediately stop the machine.
12. You should stop the pto when you need to clean or repair the machine.

**WARNING: YOU MUST OBEY ALL SAFETY INSTRUCTIONS OTHERWISE DEATH RESULTED ACCIDENTS MAY OCCURE.**

## **ATTACHMENT TO THE TRACTOR**

1. The machine is engaged to the tractor with three point-hitch Category I and II and to be set to suit the tractors with these categories. The gear box is fixed on the framework with bolts. The hook of the trailer which will be loaded stays on that framework.
2. The machines drawbar is on the framework and designed to locate on the right side of the tractor. The drawbar is adjustable in the frameworks profile and can easily fixed by a bolt on the framework. You can pick up the suitable hole to fix according to the space you want the machine from the tractor. This operation must be done for each different types of tractors you may use.
3. Forage Harvester is engaged to the hook on the framework for road position. To get back to the work position the pins on the drawbar(front and rear pins) is locked to the sockets on the machine.
4. Harvesting height is adjusted by the hydraulic arms of the tractor. After choosing the suitable height you can easily lock the pins to the sockets on the rear of the drawbar.
5. The machine must be parallel to the groun during the application. You can parallelize the machine by changing the position of the tyre support clamps sockets. You can also adjust the space between the tyres with these clamps by moving the tyres on the ptofile
6. After mounting the machine to the tractor tje pto shafts engaged like: one from pto to gearbox and one from gearbox to the machine. (DRAWING-1)



*DRAWING 1 (Attachment to Tractor)*

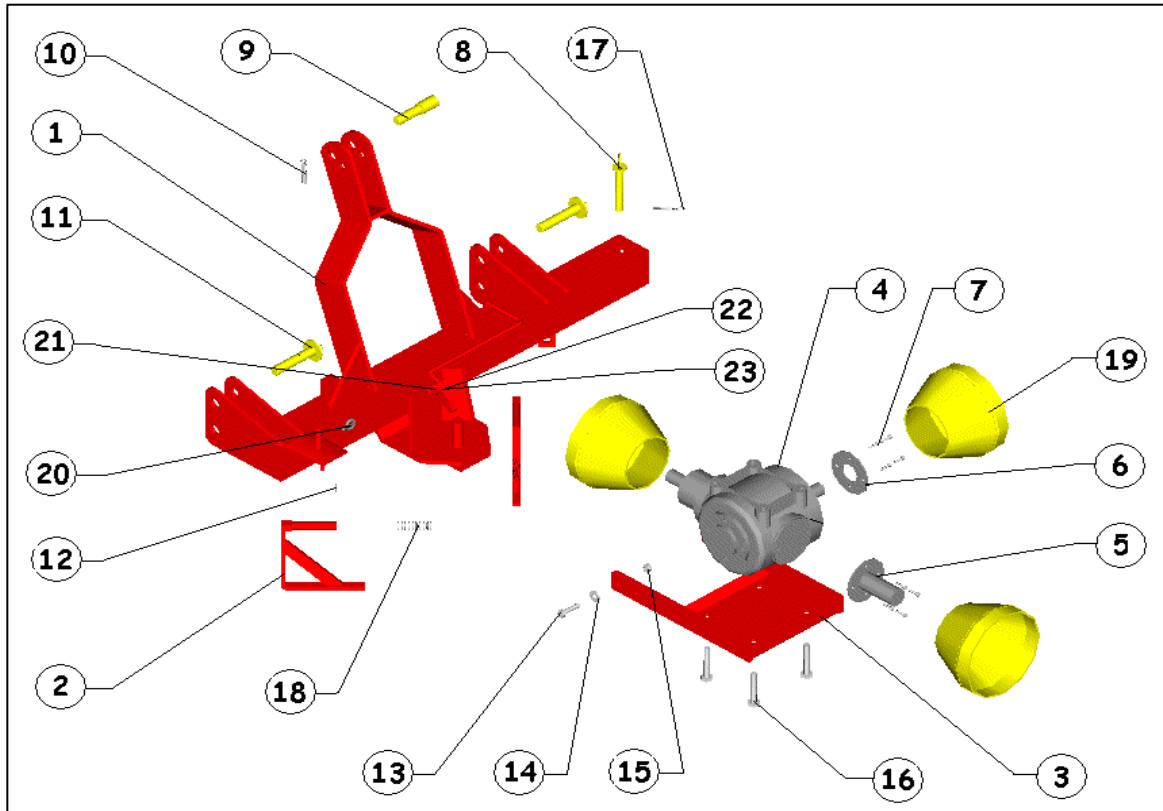
## **INSTRUCTIONS FOR HARVESTING**

1. Ensure the machine is working at needed rpm ( pto speed 540 rpm ) before beginning the operation. This rpm must be maintained during work.
2. In the application area the trailer must be engaged to the rear of the harvester and the chutes position must be directly to the trailer. Always take care of the wind direction when adjusting the chute and the flaps.
3. The pto must get to the null position at the end points of the field before turning and must slightly lifted from the hydraulic arms.
4. You can guide the position of the chute and the flaps from the control units of the machine which you can put on the tractors mud preventer.
5. Belt tension should be checked regularly, especially during first few hours of work. The correct V-belt tension avoids belt problem.
6. After a few hours of work of a new machine check all bolts and nuts are tightened well. Recheck regularly.

## **MAINTANENCE AND SERVICING**

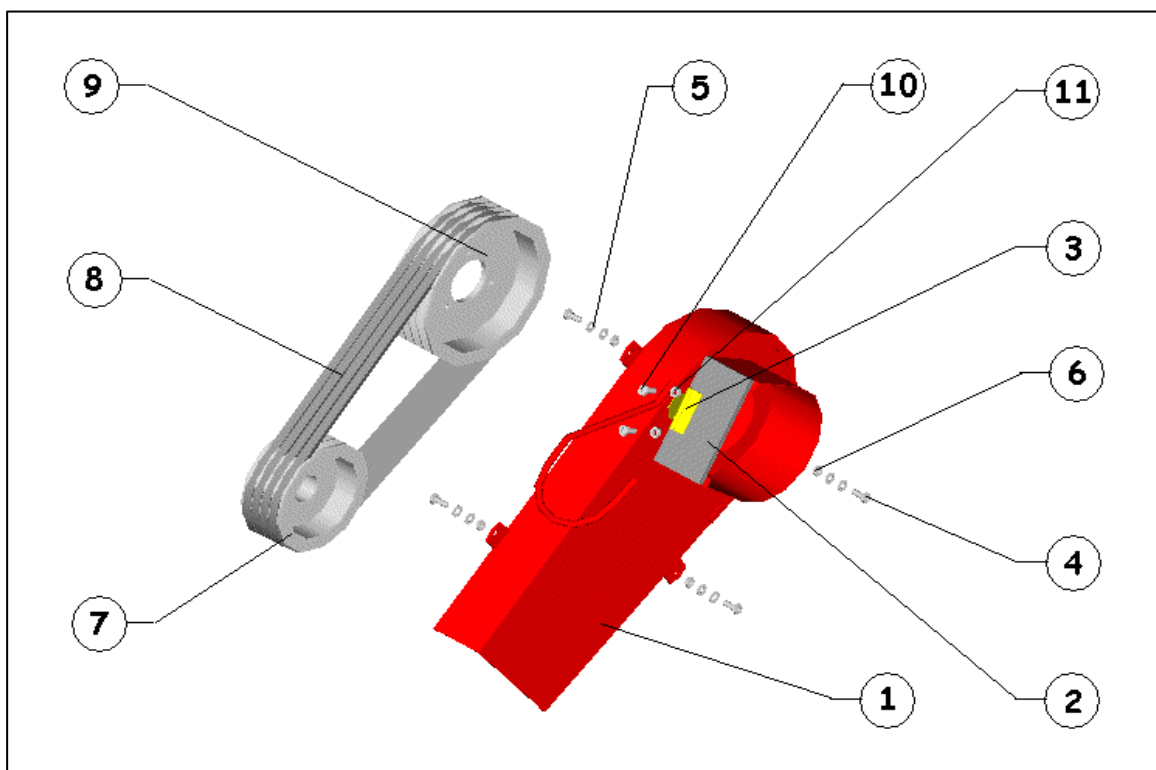
1. After each usage unfasten the locks on the body of the machine and clean the knives, body and the chute.
2. Check the knives if they are not sharp enough swap them with the new ones.  
Check the oil level of the gearbox and add if there is a reduce at the level.  
Check the pto shafts if they are in good mood or not.  
If there is a corrosion on the belts replace with the new ones.  
Assemble the chute and store the machine with a cover till the next usage.
3. Always call a service for mechanical problems.
4. When you need a spare part always ask with the code number which you can find at the spare part guide.

# CHASSIS



Pos.	Qty.	Description	Reference
1	1	Chassis "Complete"	02.06.00.00.001
2	2	Support	02.06.02.00.000
3	1	Gearbox Plate	02.06.04.00.000
4	1	Gearbox	76 T 1225200
5	1	Gearbox Cover Back	
6	1	Gearbox Cover Side	
7	12	Bolt M8x25 8.8	DIN 601
8	1	Linkage Pin	02.06.03.00.000
9	1	Upper Pin	02.06.00.00.009
10	1	Gupilya Ø5	
11	2	Lower Pin	
12	2	Slit Pin Ø5x30	DIN 1481
13	4	Bolt M12x40 8.8	DIN 601
14	4	Washer M12	DIN 125
15	4	Nut M12	DIN 934
16	4	Bolt M16x40 8.8	DIN 601
17	1	Ø4x40	DIN 94
18	2	Chassis Support Spring	02.00.00.00.012
19	3	Plastic Gearbox Cover	
20	1	Spring Pin Ø10	
21	1	Linkage Pin	
22	1	Lock Spring	
23	2	Washer	DIN 601

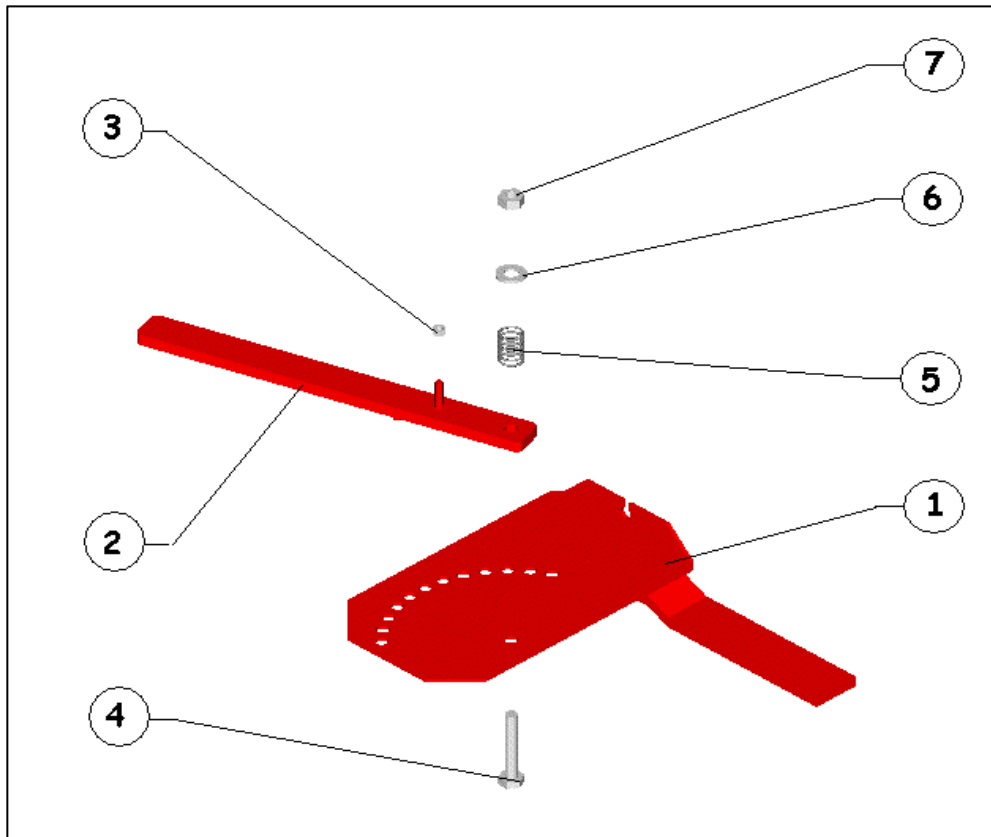
# PULLEY



Pos	Qty	Description	Reference
1	1	Belt Guard Complete	02.10.00.00.001
2	1	Plastic cover	
3	1	Sac mentese	
4	4	Bolt M 6 x 25 8.8	DIN 601
5	8	Washer M6	DIN 125
6	4	Nut M6	DIN 934
7	1	Pulley Ø200	02.00.00.00.001
8	4	V Belt 17 x 1375	DIN 7753
9	1	Pulley Ø278	02.09.00.00.001
10	2	Bolt M 6 x 30 8.8	DIN 601
11	2	Nut M6	DIN 934

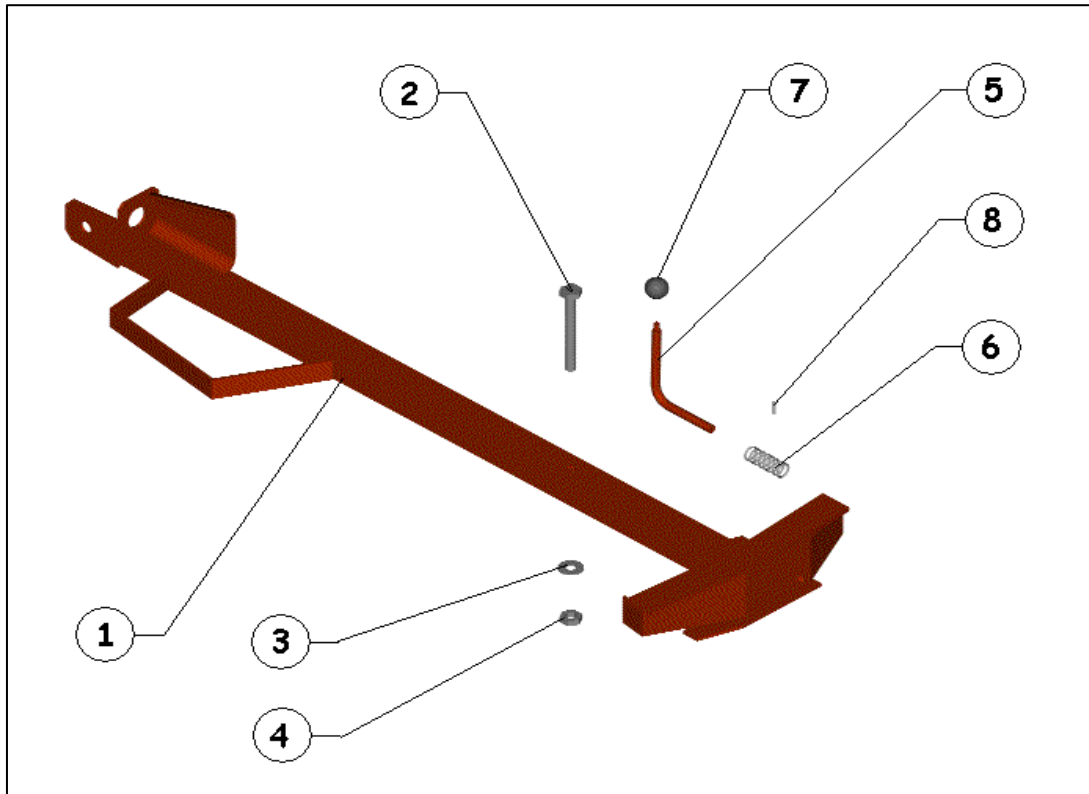


## CABLE CONTROL



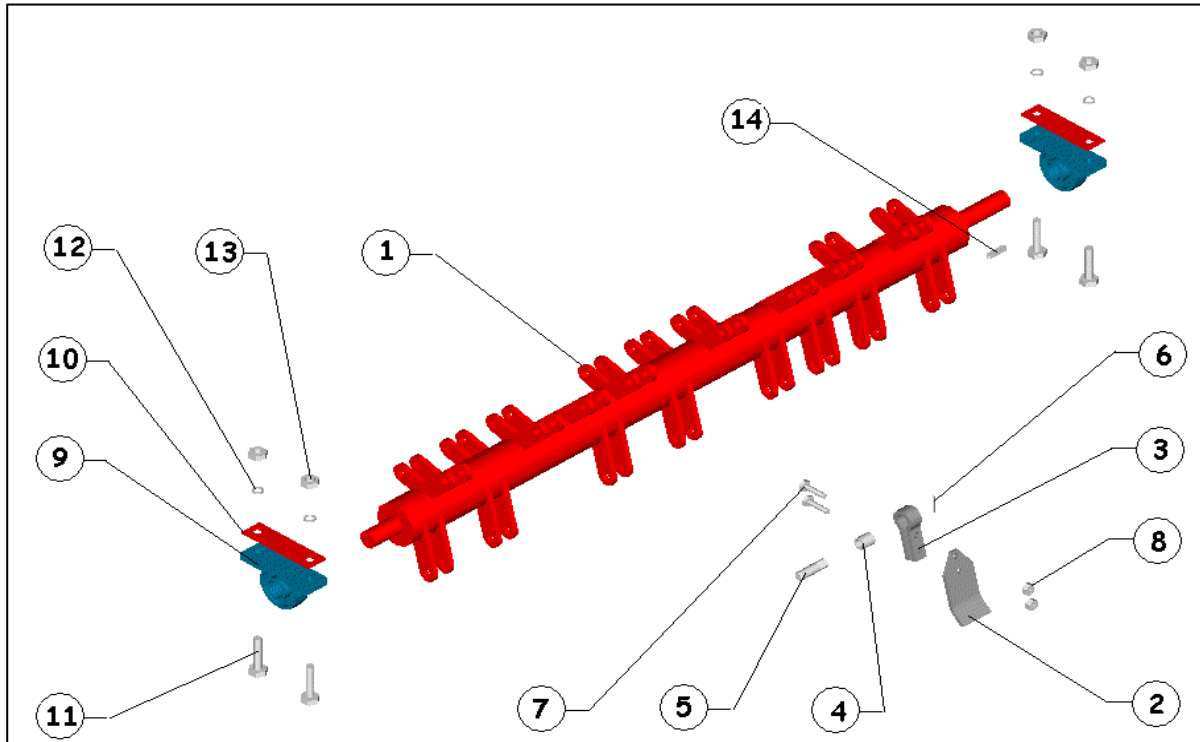
Pos	Qty	Description	Reference
1	1	Complete Cable Control Kit	02.03.02.02.000
2	1	Pulling Arm	02.03.02.02.001
3	1	Nut M8	DIN 934
4	1	Bolt M10 x 50 8.8	DIN 601
5	1	Spring	02.03.02.02.002
6	1	Washer M10	DIN 125
7	1	Nut M10	DIN 934

## ADJUSTMENT ARM



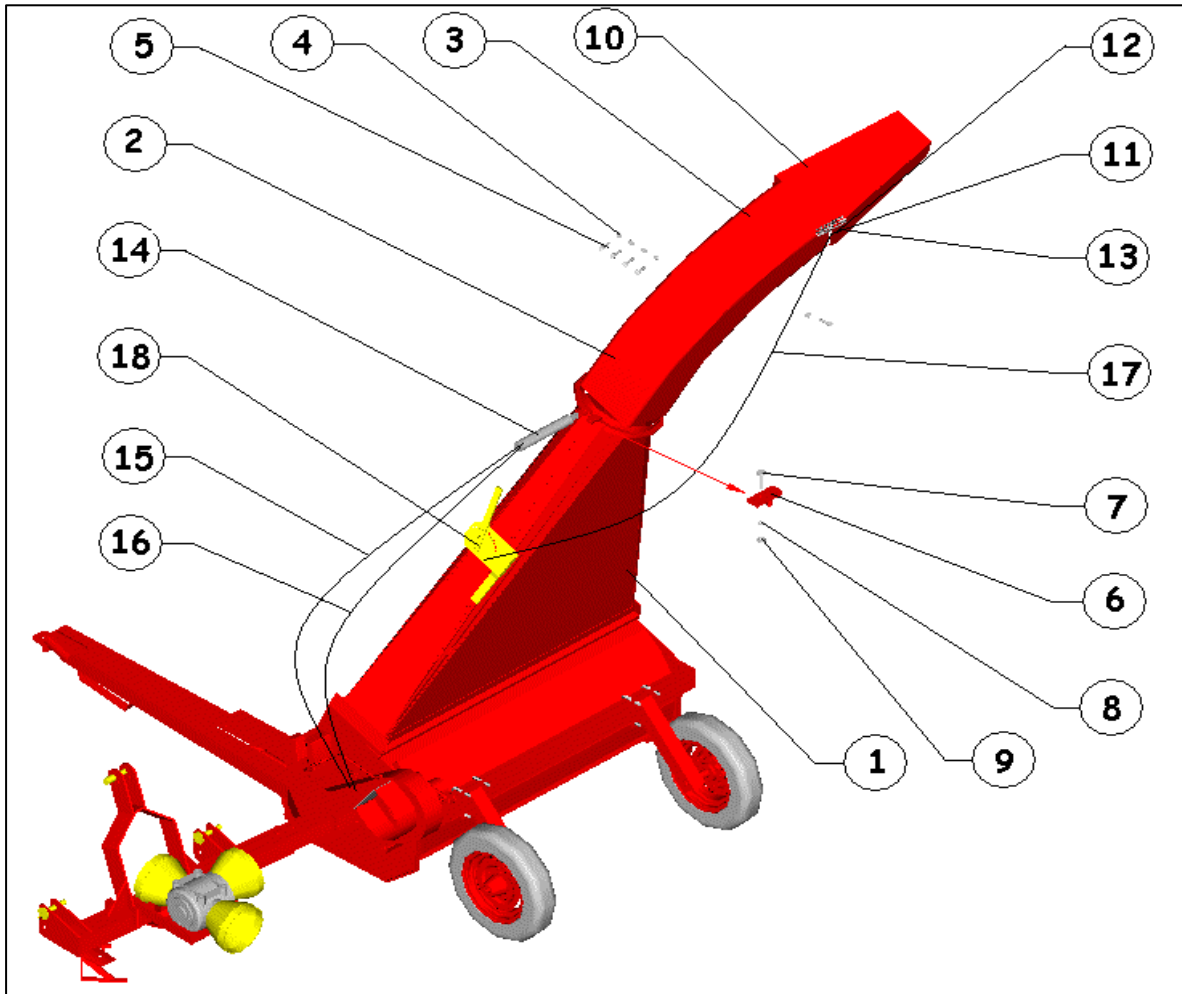
Pos	Qty	Description	Reference
1	1	Adjusment Arm Complete	02.04.00.00.000
2	1	Bolt M18 x 150 8.8	DIN 601
3	1	Washer M18	DIN 125
4	1	Nut With Nylon M18	DIN 934
5	1	Lock Arm	02.04.00.00.014
6	1	Spring	02.04.00.00.009
7	1	Ø50 M10 ball	02.04.00.00.015
8	1	Ø5 x 40 Pin	DIN 1481

# ROTOR



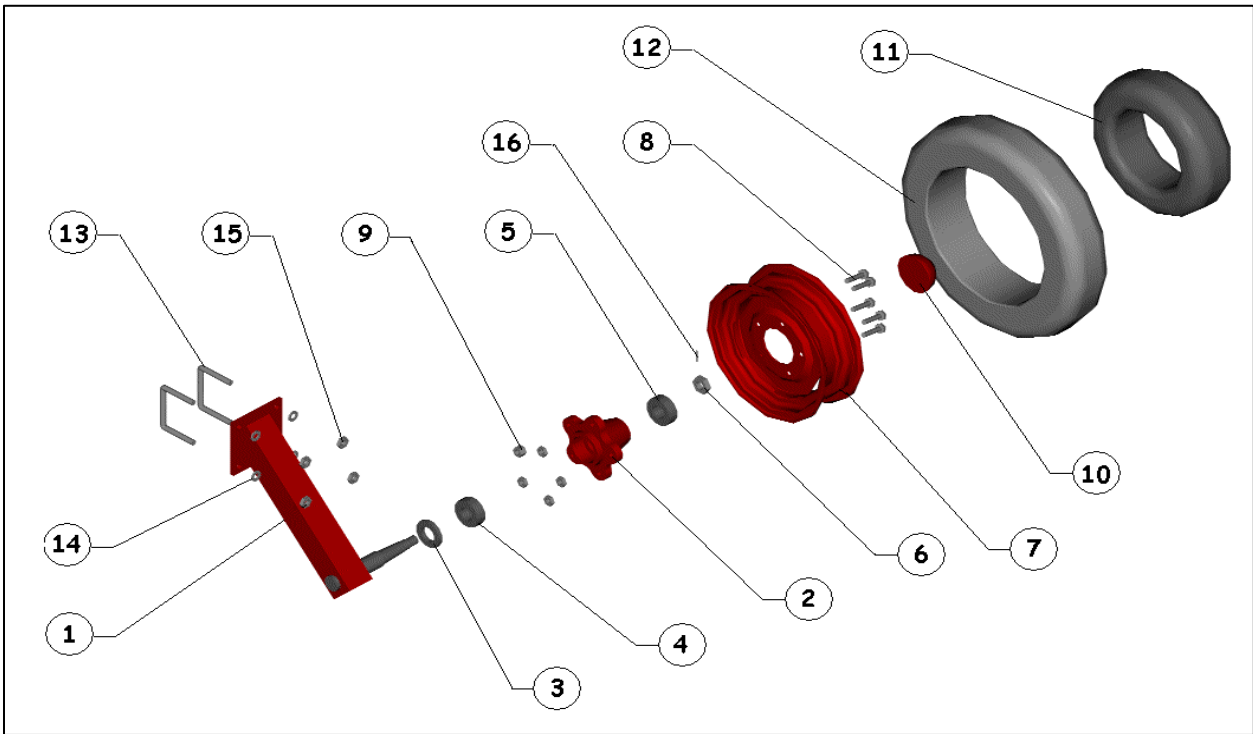
Pos	Qty	Description	Referance
1	1	Rotor Group Complete	02.02.00.00.000
2	24	Knife (fly)	02.02.03.00.001
3	24	Knife clamp	02.02.03.00.002
4	24	Knife Pipe	02.02.03.00.003
5	24	Connector Pin	02.02.03.00.004
6	24	Ø4 x 40 pin	DIN 94
7	48	Bolt M10 x 45 8.8	DIN 601
8	48	Nut With Nylon M10	DIN 934
9	2	Bearing UCF 208	UCF 208
10	2	Bearing Support	02.00.00.00.005
11	4	Bolt M12 x 50 8.8	DIN 601
12	4	Washer M12	DIN 125
13	4	Nut With Nylon M12	DIN 934
14	1	Splint Pin 7 x 8 x 70 mm	DIN 6886

# COMPLETE



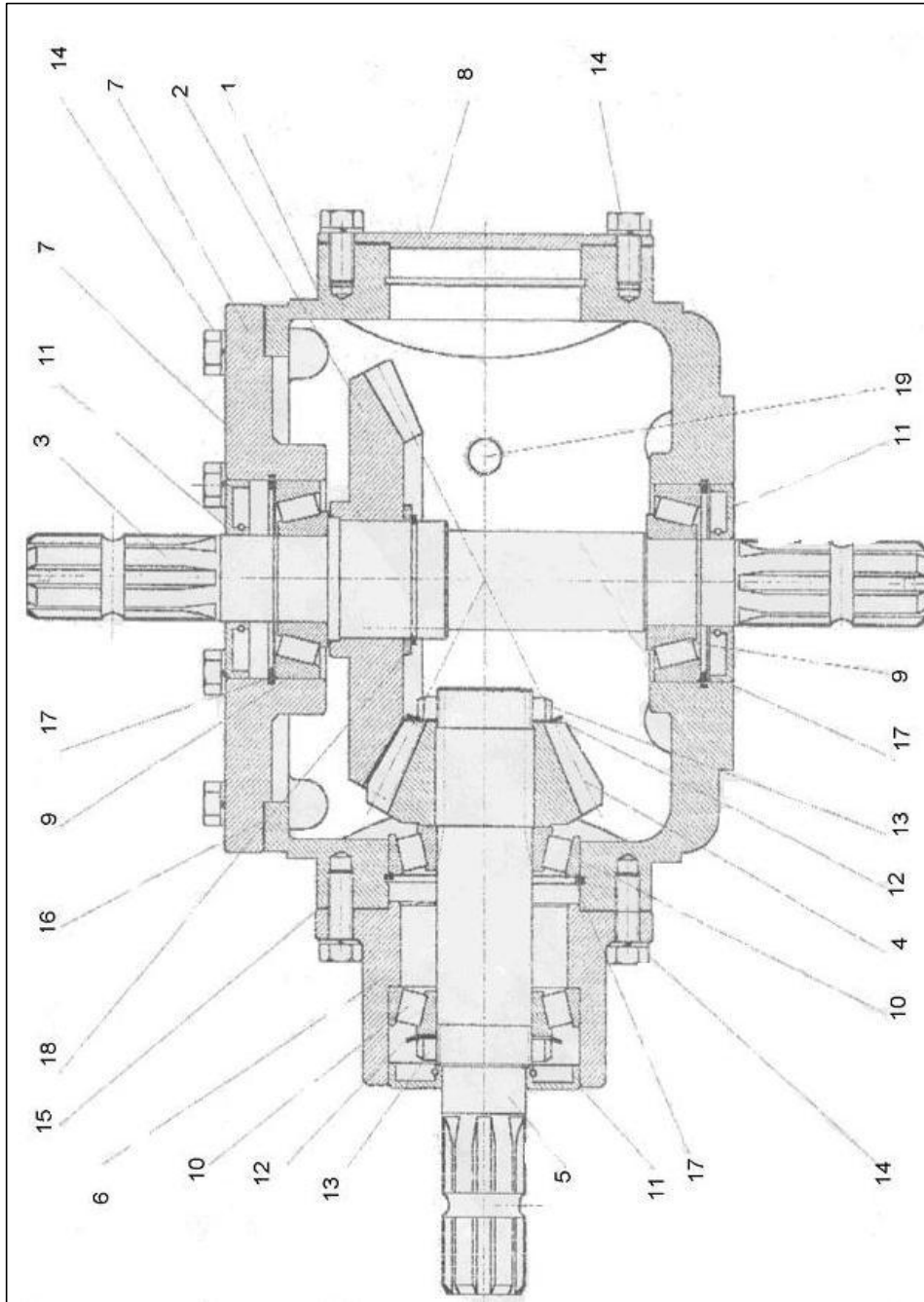
Pos.	Qty.	Description	Reference
1	1	Lower Chute	02.03.01.00.000
2	1	Chute	02.03.02.00.000
3	1	Extension (500 mm)	02.03.02.01.000
4	5	Bolt M6x20 8.8	DIN 601
5	5	Nut M6	DIN 934
6	1	Chute Lock	02.03.02.01.002
7	1	Bolt M10x35 8.8	DIN 601
8	1	Washer M10	DIN 125
9	1	Nut M10	DIN 934
10	1	Flap	02.03.02.03.001
11	1	Flap Spring	02.00.00.00.008
12	2	Bolt M10x35 8.8	DIN 601
13	2	Nut M10	DIN 934
14	1	Piston	HDRLK.KMND 34
15	1	Hydraulic Hose 4.1 mt	HDRLK.KMND 09
16	1	Hydraulic Hose 4.6 mt	HDRLK.KMND 08
17	1	Wire Rope	100SP.SPRL 1500
18	4	Bolt M10	DIN 934

# TYRE



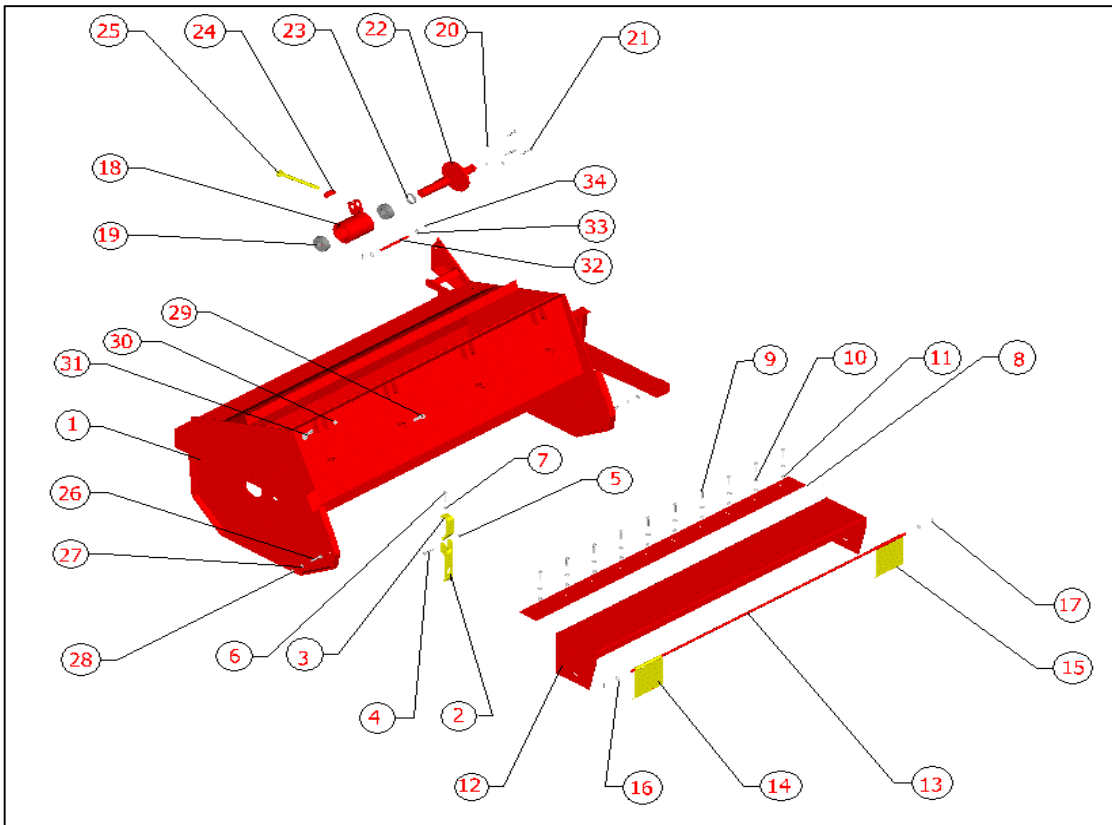
Pos	Qty	Description	Referance
1	2	Complete Wheel Group	02.08.00.00.000
2	2	Hub	02.08.00.00.001
3	2	Oil Seal	02.08.00.00.003
4	2	Bearing	30208 A
5	2	Bearing	30205 A
6	2	Nut 7/8 "	DIN 94
7	2	Rim	DIN 601
8	10	Bolt M12 x 45 8.8	DIN 934
9	10	Nut M12	UCP 208
10	2	Cover	02.08.00.00.002
11	2	Inner Tyre	DIN 601
12	2	Tyre	DIN 125
13	4	U Clamp	DIN 934
14	8	Washer M14	DIN 6886
15	8	Nut M14	DIN 934
16	2	Ø4 x 40 Pin	DIN 6886

# GEARBOX



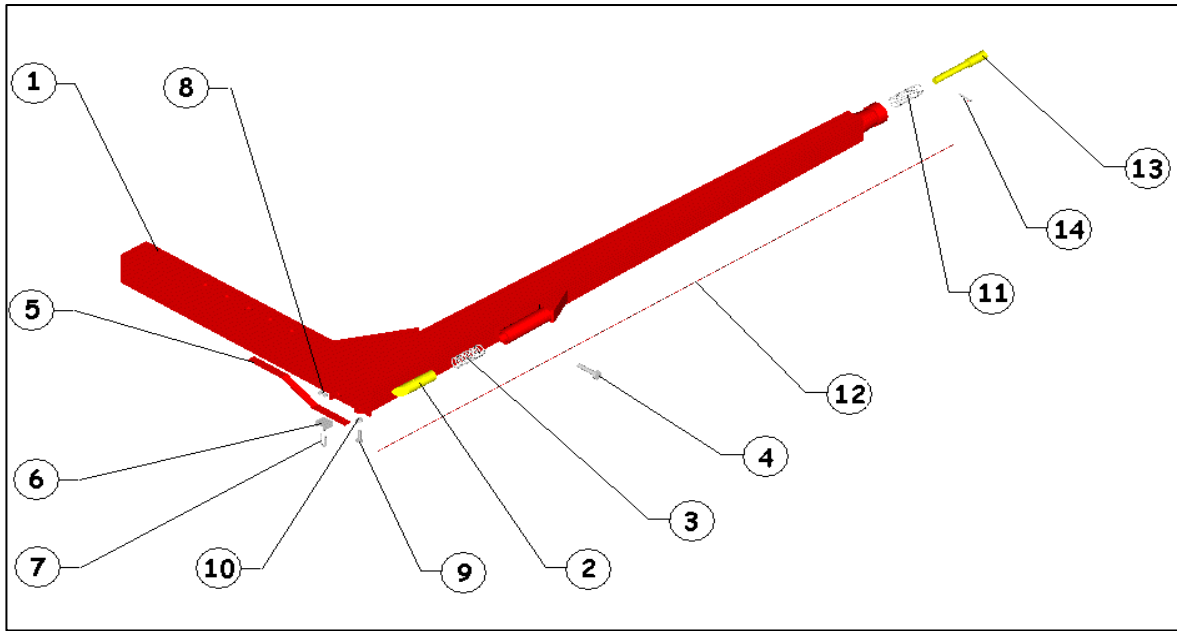
Pos	Qty	Description	Reference
1	1	Housing	76 T 1225200
2	1	Gear (z:29 m:6)	76 T 1225362
3	1	Shaft	76 T 1225463
4	1	Pinion Gear (z:15 m:6)	76 T 1225562
5	1	Pinion Gear Shaft	76 T 1225663
6	1	Complete Pinion Gear Flange	76 T 1225761
7	1	Flange	76 T 1226061
8	1	Gear Metal Cover	76 T 1116300
9	2	Conical Bearing 30207 A	1930030307
10	2	Conical Bearing 30208 A	1930030208
11	3	Oil Seal (35 x 80 x 10)	1907503580
12	2	Safety Metal M40	1901704000
13	2	Shear Bolt M40 x 1.5	1901804000
14	12	Bolt M10 x 20 8.8	190110810
15	1	Pinion gear Gasket	76 T 1226400
16	1	z:29 Gear Gasket	76 T 1226500
17	3	Inner Ring Ø50 x 2.5	1901508025
18	1	Shaft Ring Ø48 x 1.75	1909404817
19	1	Bolt R3/8"	DIN 601

## BODY



Pos	Qty	Description	Referance
1	1	Body "Complete"	02.01.00.00.001
2	4	Clasp	02.01.01.01.001
3	4	Upper Lock Arma	02.01.01.00.001
4	4	Bolt M8 x 50 8.8	DIN 601
5	4	Nut M 8	DIN 934
6	4	Bolt M8 x 45 8.8	DIN 601
7	4	Nut M10	DIN 934
8	1	Counter Knife	02.00.00.00.002
9	10	Bolt M8 x 35 8.8	DIN 601
10	20	Washer M8	DIN 125
11	10	Nut M8	DIN 934
12	1	Guard Cover Sheet	02.11.00.00.001
13	1	Guard Rod	02.00.00.00.003
14	1	Guard Narrow	02.11.02.00.001
15	8	Guard Wide	02.11.01.00.001
16	2	Washer M12	DIN 125
17	2	Gupilya Ø4 x 40	DIN 94
18	1	Large Pulley Bearing-House	02.09.01.00.001
19	2	Bearing 6208 Z	DIN 625
20	3	Bolt M10 x 40 8.8	DIN 601
21	3	Nut M 10	DIN 934
22	1	Machined Rod	02.09.01.01.001
23	1	O-ring	DIN 471
24	1	Streching Nut	02.09.00.00.002
25	1	Streching gijonu	02.09.00.00.004
26	2	Bolt M10 x 35 8.8	DIN 601
27	2	Washer M10	DIN 125
28	2	Nut M10	DIN 934
29	4	Spring Pin Ø6	
30	4	Nut M8	DIN 934
31	4	Bolt M8 x 60 8.8	DIN 601
32	1	Fixing Pin	02.09.00.00.003
33	2	Washer M12	DIN 125
34	3	Safety pin Ø4 x 40	DIN 94

# L CONNECTER



Pos	Qty	Description	Referance
1	1	Complete L Connector	02.05.00.00.000
2	1	Lock Pin	02.05.00.00.010
3	1	Lock Pin Spring	02.00.00.00.010
4	1	Bolt M 8 x 30 8.8	DIN 601
5	1	Rope Controller	02.05.00.00.012
6	1	Rope Lock	
7	1	Clamp	
8	2	M 5 Clamp Nut	DIN 934
9	1	Bolt M 8 x 30 8.8	DIN 601
10	1	Nut M 8	DIN 934
11	1	Pin Spring	02.00.00.00.011
12	1	Wrire Rope 3 mm x 2 mt	
13	1	Front Pin	02.05.00.00.011
14	1	Ø 5 x 40 Pin	DIN 1481