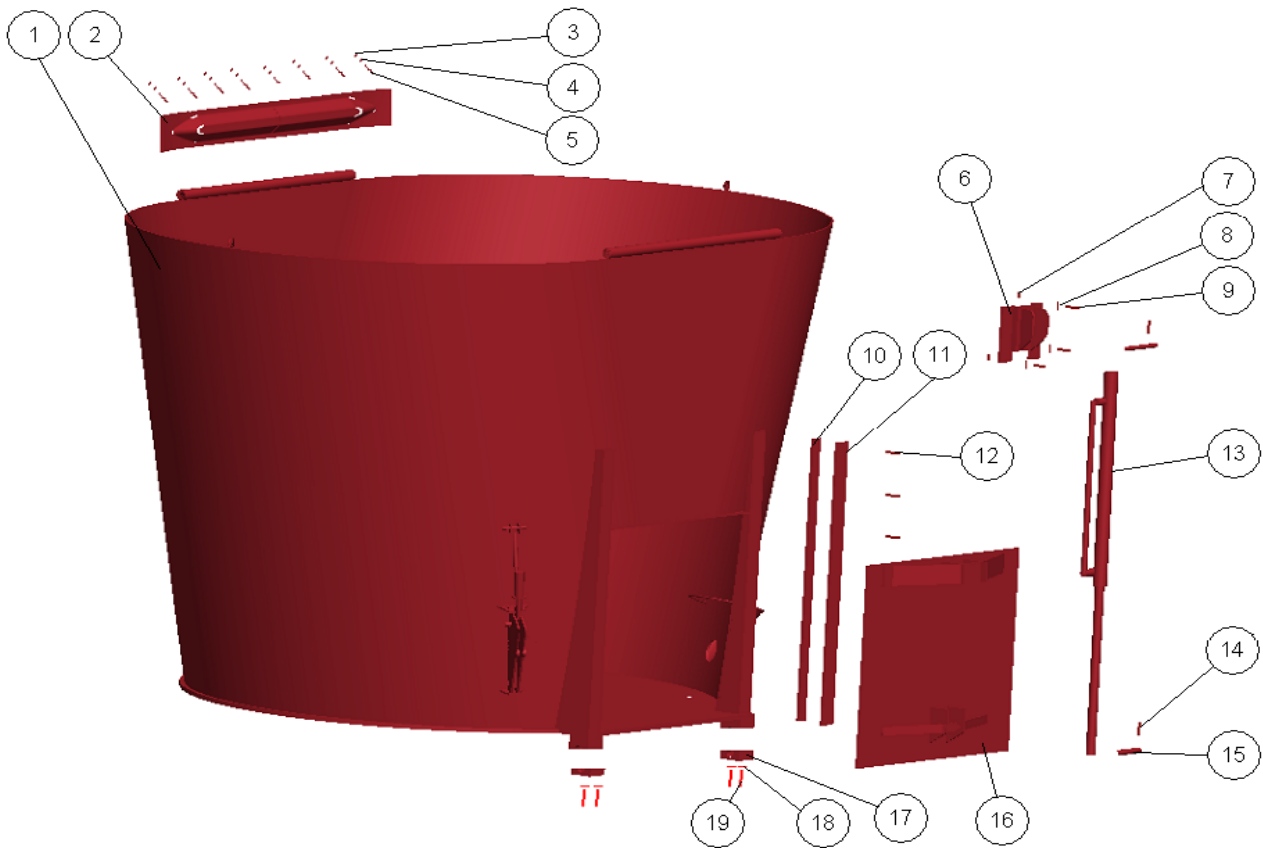
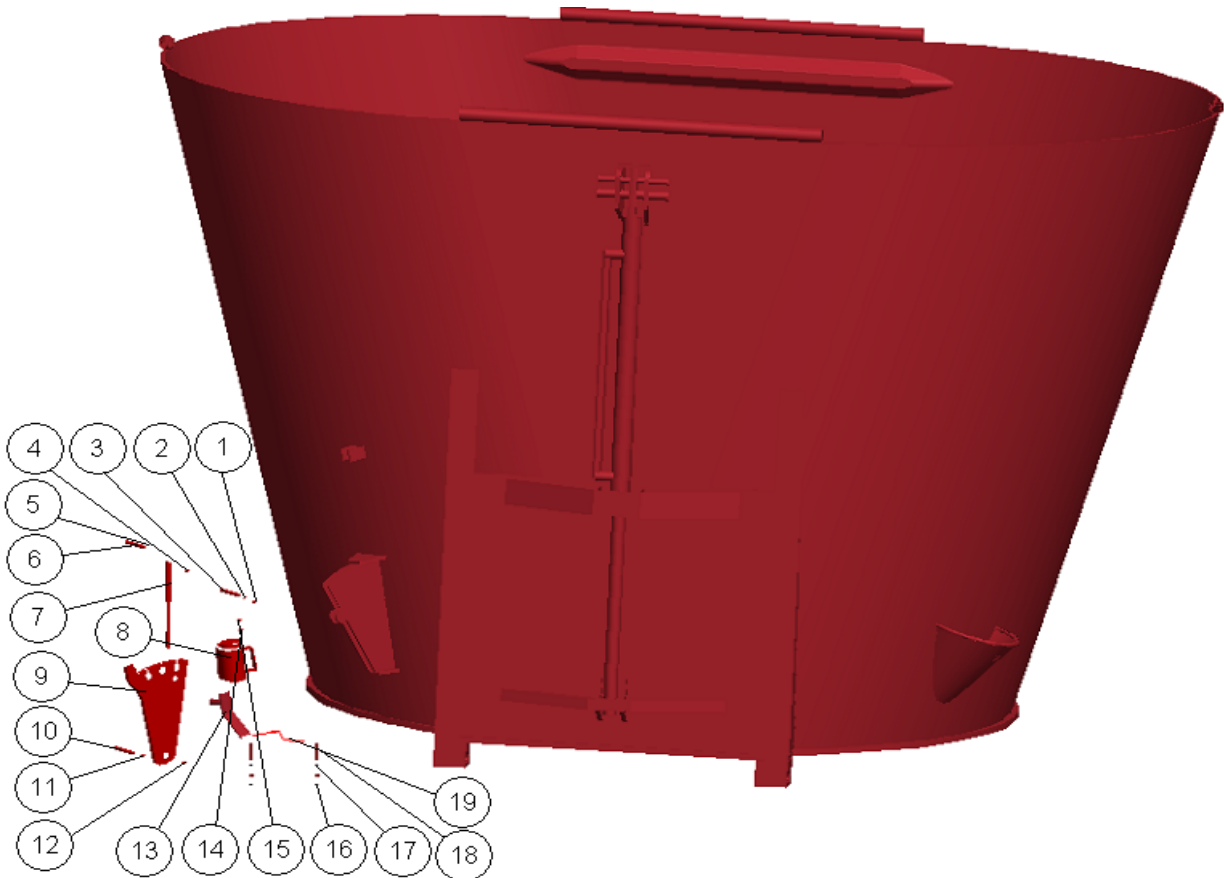


BUCKET-1



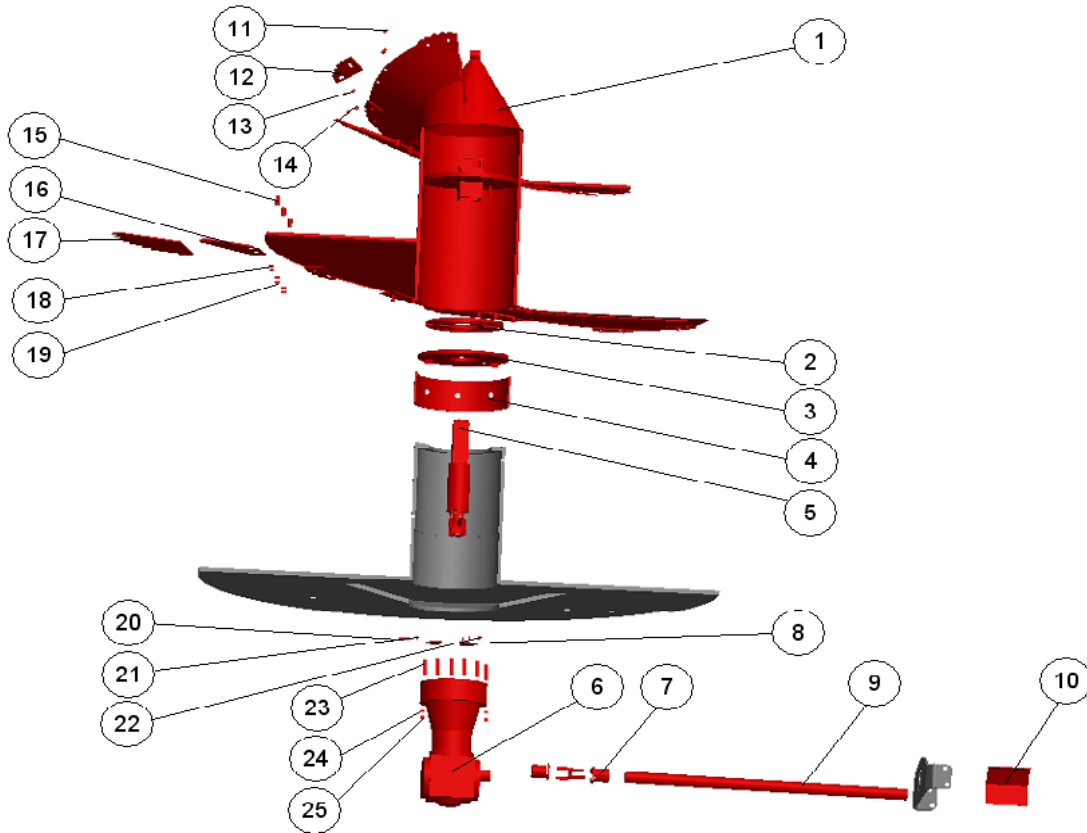
Pos.	Qty	Description	Reference
1	1	BUCKET	YK.06.00.00.000Y
2	1	BUCKET SIDE SUPPORT	YK.06.08.00.000
3	32	BOLT M 10 x 25	DIN 7991
4	32	SPACER M 10	DIN 125
5	32	NUT M 10	DIN 15.87
6	1	PISTON CONNECTOR	YK.06.04.00.000
7	4	NUT M 10	DIN 15.87
8	4	SPACER M 10	DIN 125
9	4	BOLT M 10 x 20	DIN 931
10	2	DOOR PLATE	YK.06.00.00.010Y
11	2	DOOR UPPER PLATE	YK.06.00.00.011
12	14	BOLT M 12 x 50	DIN 7991
13	1	DOOR PISTON	YK.06.10.00.000
14	2	PIN WITH SPRING Ø 10	100Y.Ø10
15	2	DOOR PISTON PIN	YK.06.00.00.006
16	1	DOOR	YK.06.05.00.000Y
17	2	CONVEYOR CONNECTOR	YK.04.00.00.001Y
18	4	SPACER M 12	DIN 125
19	4	BOLT M 12 x 45	DIN 931

BUCKET-2



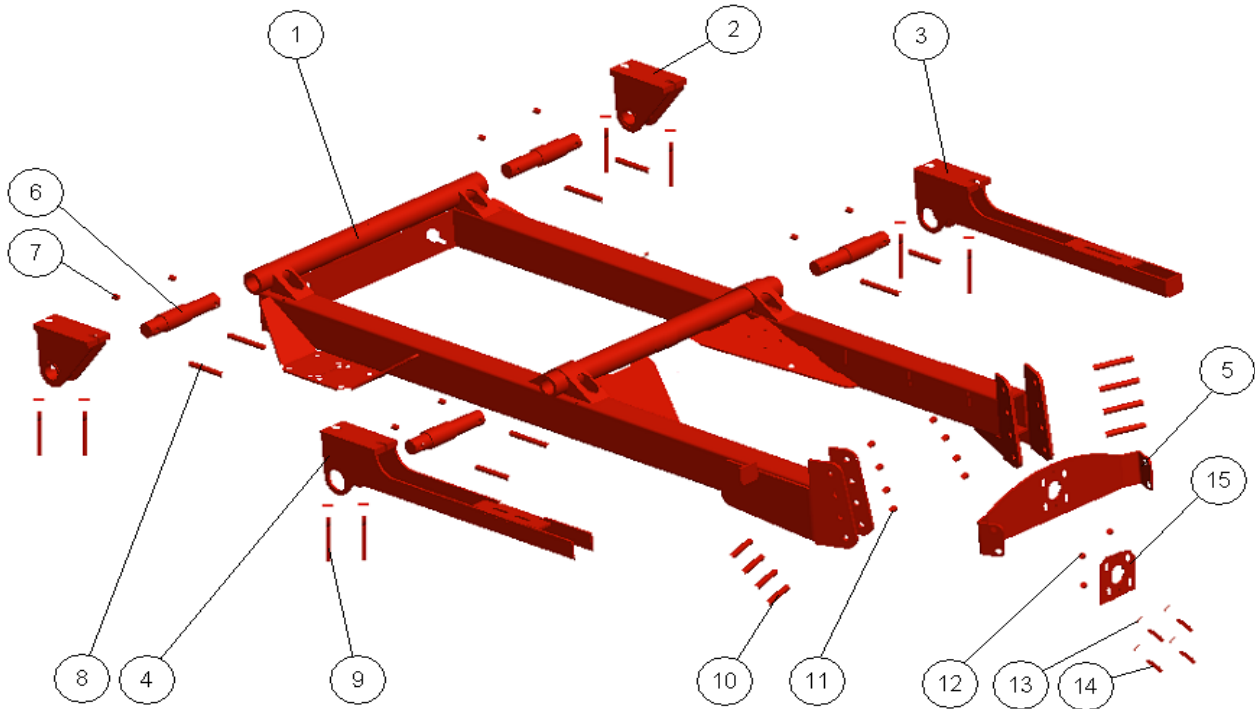
Pos.	Qty	Description	Referance
1	1	NUT FIBER M 10	DIN 985
2	2	SPACER M 10	DIN 125
3	2	BOLT M 10 x 50	DIN 931
4	1	NUT FIBER M 14	DIN 985
5	2	SPACER M 14	DIN 125
6	1	BOLT M 14 x 65	DIN 931
7	1	FIXED KNIFE PISTON	YK.06.06.00.000
8	1	OIL BOX	YK.06.09.00.000
9	2	FIXED KNIFE	YK.06.09.00.001
10	2	BOLT M 20 x 60	DIN 931
11	4	SPACER M 20	DIN 125
12	2	NUT FIBER M 20	DIN 985
13	2	FIXED KNIFE HOLDER	YK.06.03.00.000
14	2	NUT FIBER M 8	DIN 985
15	2	SPACER M 8	DIN 125
16	4	NUT FIBER M 6	DIN 985
17	8	SPACER M 6	DIN 125
18	4	BOLT M 6 x 25	DIN 931
19	2	PIN HOLDER RUBBER	100PM.PM TTC

AUGER



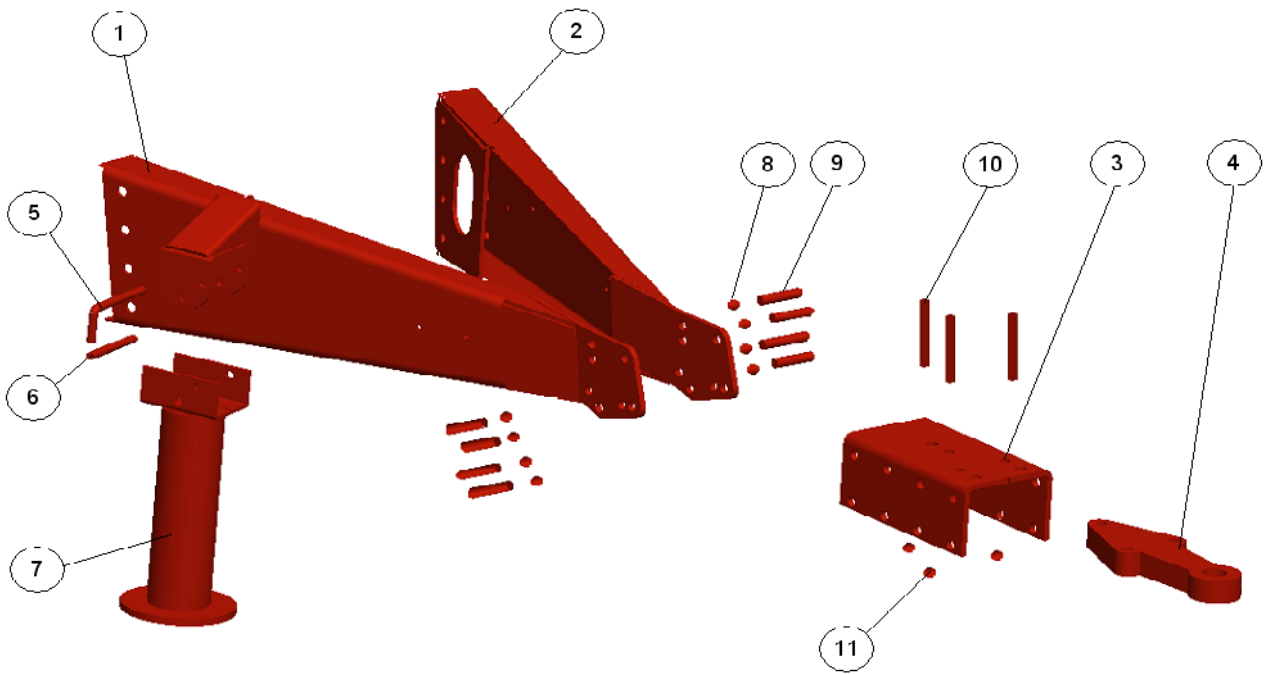
Pos.	Qty	Description	Referance
1	1	AUGER	YK.06.02.00.000
2	1	AUGER POLYAMID	YK.06.02.00.004
3	1	AUGER FLANGE	YK.06.02.01.000
4	2	BEARING POLYAMID	YK.06.02.00.006
5	1	AUGER SHAFT	YK.06.02.00.005
6	1	GEARBOX	YK.06.02.00.059
7	1	CROSS	YK.06.02.00.060
8	2	DUST COVER	YK.06.02.00.011
9	1	SHAFT	YK.06.02.00.008
10	1	SHAFT COVER	YK.06.02.00.009
11	34	BOLT M 12 x 35	DIN 7991
12	17	SMALL KNIFE	YK.06.02.00.003
13	34	SPACER M 12	DIN 125
14	34	NUT FIBER M 12	DIN 985
15	12	BOLT M 16 x 40	DIN 7991
16	4	KNIFE SUPPORT	YK.06.02.00.001
17	4	BIG KNIFE	YK.06.02.00.002
18	12	SPACER M 16	DIN 125
19	12	NUT M 16	DIN 985
20	2	BOLT M 6 x 20	DIN 931
21	4	SPACER M 6	DIN 125
22	2	NUT FIBER M 6	DIN 985
23	12	BOLT M 14 x 140	DIN 931
24	12	SPACER M 14	DIN 125
25	12	NUT FIBER M 14	DIN 985

CHASSIS



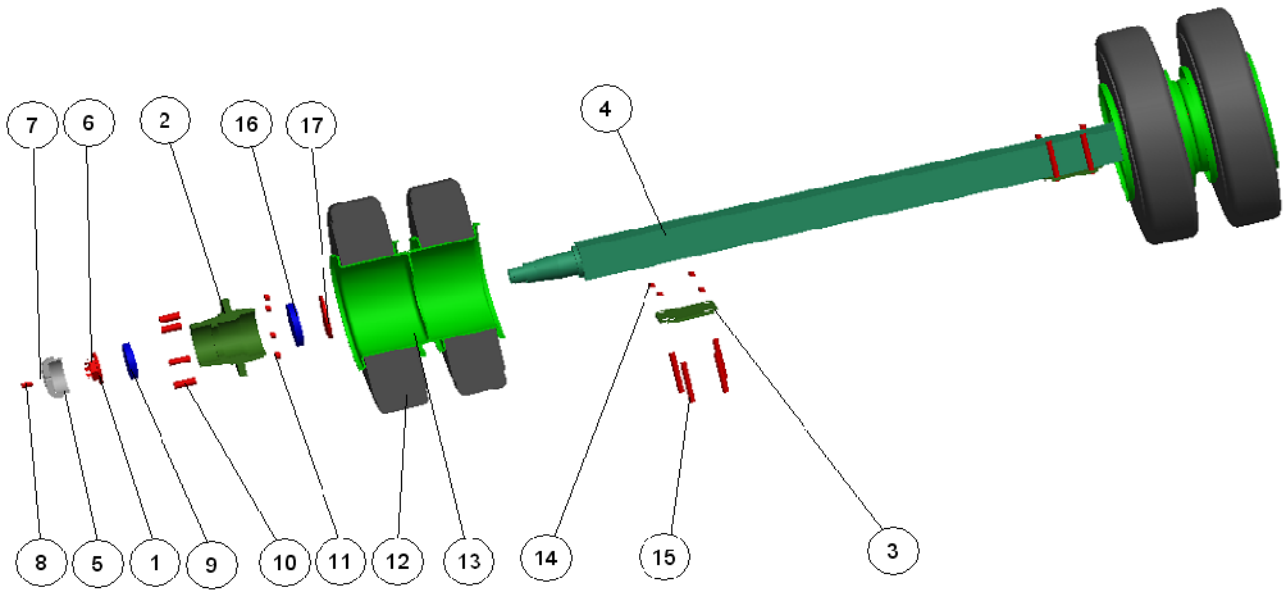
Pos.	Qty	Description	Referance
1	1	CHASSIS COMPLETE	YK.01.00.00.000
2	2	BUCKET SUPPORT	YK.01.01.00.000
3	1	CONVEYOR RIGHT PLATE	YK.01.03.00.000
4	1	CONVEYOR LEFT PLATE	YK.01.02.00.000
5	1	SHAFT PLATE	YK.01.00.00.014
6	4	LOADCELL	YK.01.50
7	8	NUT FIBER M 16	DIN 985
8	8	BOLT M 16 x 105	DIN 931
9	8	BOLT M 20 x 60	DIN 7991
10	8	NUT FIBER M 20	DIN 985
11	8	BOLT 20 x 50	DIN 931
12	4	NUT FIBER M 14	DIN 931
13	8	SPACER M 14	DIN 125
14	16	BOLT M 14 x 50	DIN 931
15	1	BEARING	UCF 207

HITCH



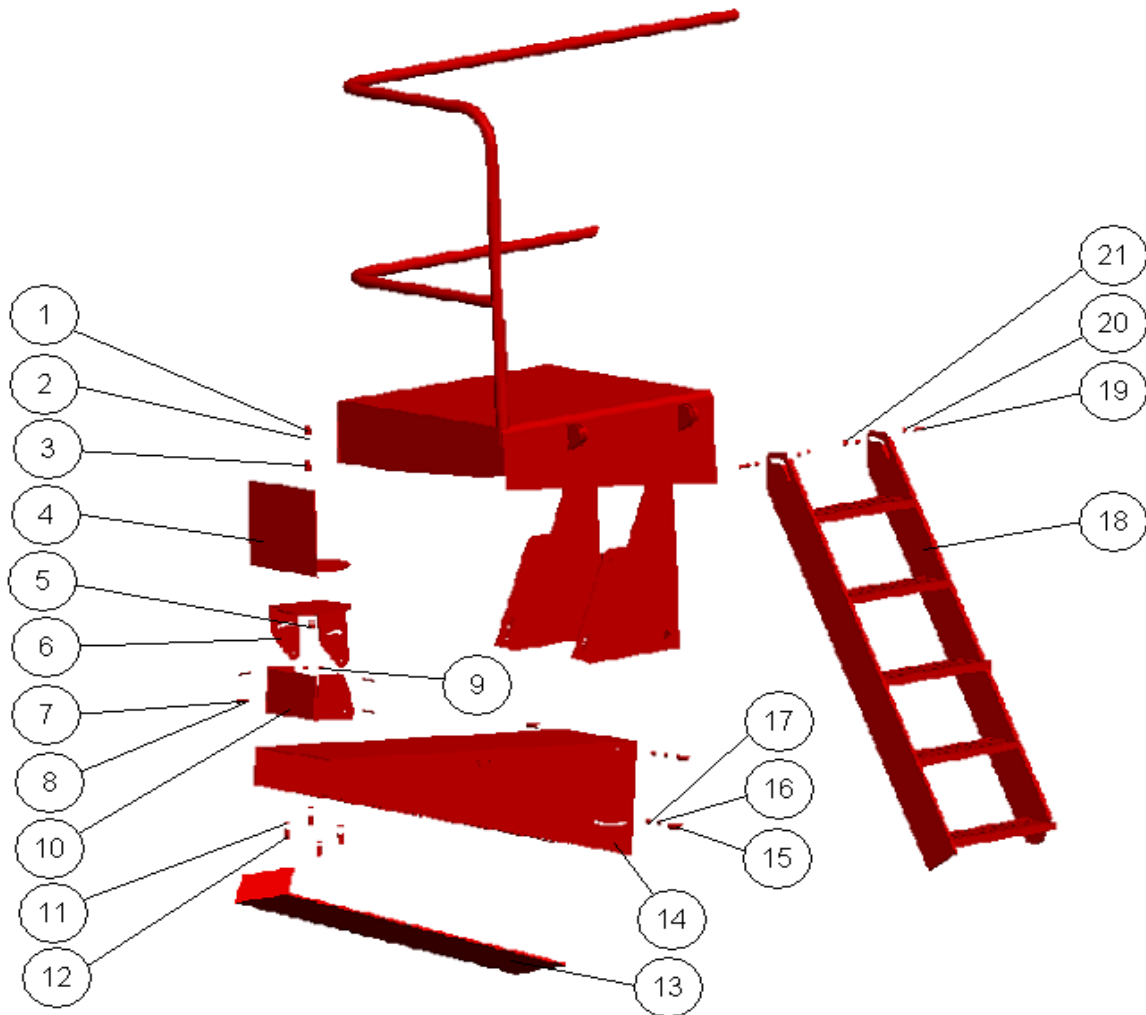
Pos.	Qty	Description	Referance
1	1	HITCH RIGHT ARM	YK.02.00.00.001R
2	1	HITCH LEFT ARM	YK:02.00.00.001L
3	1	HITCH PLATE	YK.02.00.00.009
4	1	HITCH	YK.02.00.00.010
5	1	L ARM	YK.02.00.00.005
6	1	PIN	YK.02.00.00.004
7	1	STANDJACK PISTON	HDRLK KMND 06
8	8	NUT FIBER M 20	DIN 985
9	8	BOLT M 20 x 50	DIN 931
10	3	BOLT M 20 x 90	DIN 931
11	3	NUT FIBER M 20	DIN 985

AXLE



Pos.	Qty	Description	Referance
1	2	AXLE NUT	YK.03.00.00.002
2	2	AXLE HUB	YK.03.00.00.003
3	2	AXLE PLATE	YK.03.00.00.004
4	1	AXLE SHAFT	YK.03.00.00.005
5	2	DUST COVER	YK.03.00.00.006
6	2	NUT GUPILYA	YK.03.00.00.007
7	2	GREASE NIPPLE SUPPORT	YK.03.00.00.008
8	2	3/8" GREASE NIPPLE	DIN 71412
9	2	CONICAL BEARING	32 212 A
10	12	BOLT&NUT 3/4" x Ø 20 x60	100B 3/4"
11	12	NUT 3/4"	ASA B-18.22
12	4	TYRE	100 L.700 x 12
13	4	WHEEL	YK.03.00.00.001
14	8	BOLT M 16 x 150	DIN 931
15	8	NUT M 16	DIN 985
16	2	CONICAL BEARING	32 215 A
17	2	SEAL Ø130 x Ø80 x 12	DIN 3760

PLATFORM



Pos.	Qty	Description	Referance
1	1	BOLT M 10 x 50	DIN 931
2	2	SPACER M 10	DIN 125
3	1	SPRING	YK.05.00.00.014
4	1	LOWER PLATE	YK.05.00.00.006
5	1	NUT M 10	DIN 985
6	1	MIDDLE PLATE	YK.05.00.00.007
7	4	BOLT M 6 x 25	DIN 931
8	8	SPACER M 6	DIN 125
9	8	NUT M 6	DIN 985
10	1	UPPER PLATE	YK.05.00.00.008
11	4	BOLT M 6 x 25	DIN 931
12	8	SPACER M 6	DIN 125
13	1	DUST COVER	YK.05.00.00.003
14	1	BOOM PLATE	YK.05.00.00.002
15	4	BOLT M 10 x 25	DIN 931
16	8	SPACER M 10	DIN 125
17	4	NUT FIBERM 10	DIN 985
18	1	LADDER	YK.05.01.00.000
19	2	BOLT M 10 x 50	DIN 931
20	4	SPACER M 10	DIN 125
21	2	NUT FIBER M 10	DIN 985