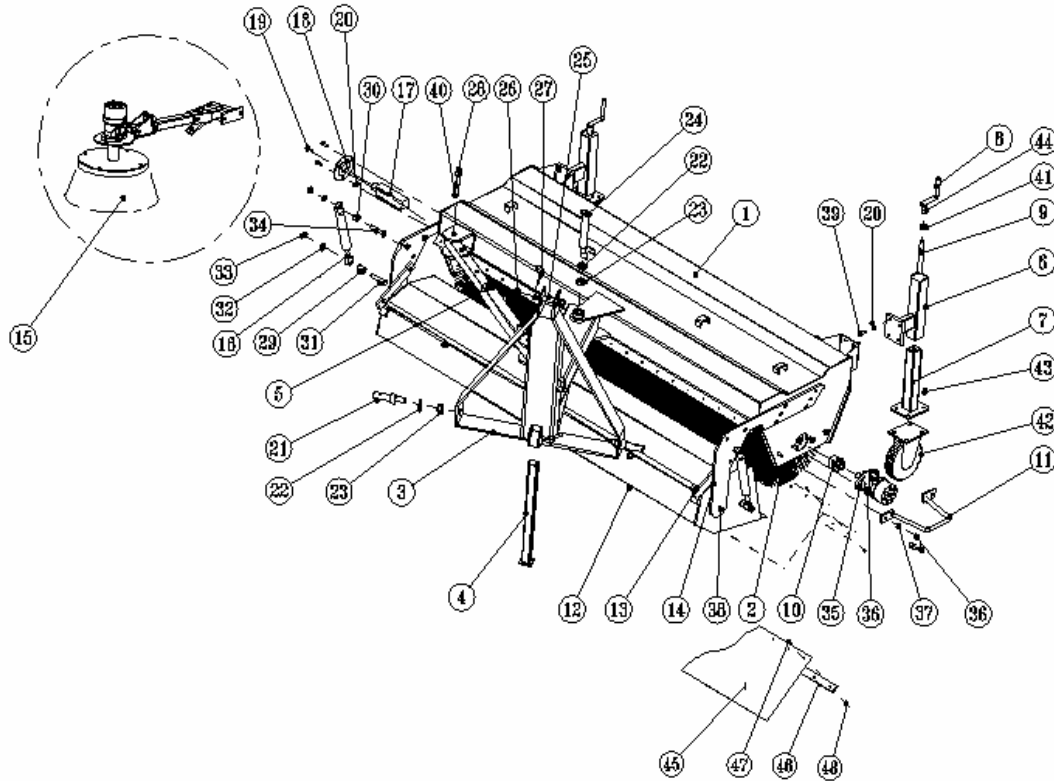


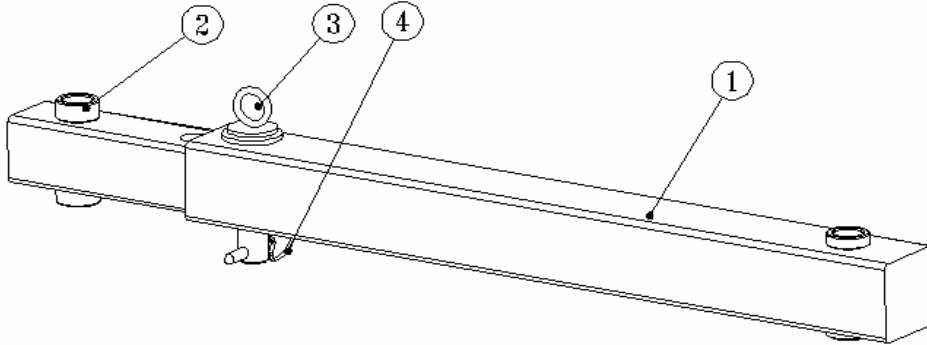
COMPLETE SWEEPER WITH BUCKET & LATERAL BRUSH



Pos.	Qty.	Description	Reference
1	1	BODY COMPLETE	56.01.00.00.000
2	1	MIXED BRUSH COMPLETE	26.02.00.00.000
2/1	1	POLYPROPYLENE BRUSH COMPLETE	26.02.00.00.000P
2/2	1	WIRE BRUSH COMPLETE	26.02.00.00.000W
3	1	COMPLETE 3 POINT HITCH	56.03.00.00.000
4	1	STANDJACK	56.04.00.00.000
5	1	MECHANICAL PISTON	56.05.00.00.000
6	2	TYRE OUTER PROFILE	56.06.00.00.000
7	2	TYRE INNER PROFILE	56.07.00.00.000
8	2	HANDLE	56.08.00.00.000
9	2	TREATED SHAFT	56.09.00.00.000
10	1	SHORT SQUARE SHAFT	26.03.00.00.000
11	1	GUARD	56.11.00.00.000
12	1	BUCKET COMPLETE	56.12.00.00.000
13	1	UNLOADING ARM	56.13.00.00.000
14	2	BUCKET CONNECTING SHEET METAL	56.14.00.00.001
15	1	LATERAL BRUSH	56.15.00.00.000
16	2	PISTON	56.16.00.00.001
17	1	SQUARE SHAFT	26.00.00.00.001
18	1	SPBF 207 BEARING	100R.SPBF 207
19	3	M10X30 BOLT MBDK	100C.M10X30 MBDK
20	19	M10 NUT	100S.M10 SOMUN
21	2	HITCH SHAFT	56.00.00.00.001

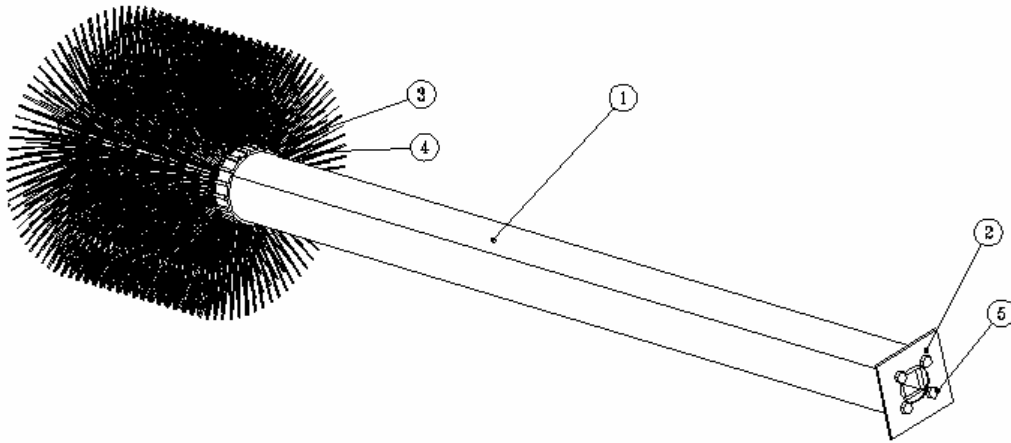
22	3	M22 WASHER	100P.M22 PUL
23	3	M22 NUT	100S.M22 SOMUN
24	1	CHASSIS CONNECTING PIN	56.02.00.00.000
25	1	KING-PIN	56.00.00.00.002
26	1	KING-PIN WASHER	26.00.00.00.011
27	5	Ø10 SPRING PIN	100Y.Ø10 YAYLI
28	2	PISTON PIN	26.00.00.00.009
29	2	BUCKET PISTON SPACER	56.16.00.00.003
30	2	PISTON SPACER	56.16.00.00.002
31	2	M14X80 BOLT 8.8	100C.M14X80
32	4	M14 WASHER	100P.M14 PUL
33	4	M14 NUT	100S.M14 SOMUN
34	2	M14X60 BOLT 8.8	100C.M14X60
35	1	HYDRAULIC COMPLETE	26.12.00.00.000
35/1	1	HYDRAULIC FOR LATERAL BRUSH	26.12.00.00.000Y
36	12	M12 NUT	100S.M12 SOMUN
37	6	M12 WASHER	100P.M12 PUL
38	12	M12X40 BOLT 8.8	100C.M12X40
39	8	M10X25 BOLT 8.8	100C.M10X25
40	2	Ø4 FIRKETE	100F.Ø4 FRKT
41	2	51102 BEARING	100R.51102
42	2	Ø200XØ50 TYRE (KAMA)	100L.200X50
43	8	M10X25 BOLT 8.8	100C.M10X25
44	2	Ø5X30 SLIT PIN	100Y.Ø5X30
45	1	RUBBER	56.00.00.00.004
46	1	RUBBER TIGHTNING METAL	56.00.00.00.003
47	21	M8X25 BOLT 8.8	100C.M8X25
48	21	M8 NUT	100S.M8 SOMUN

MECHANICAL PISTON



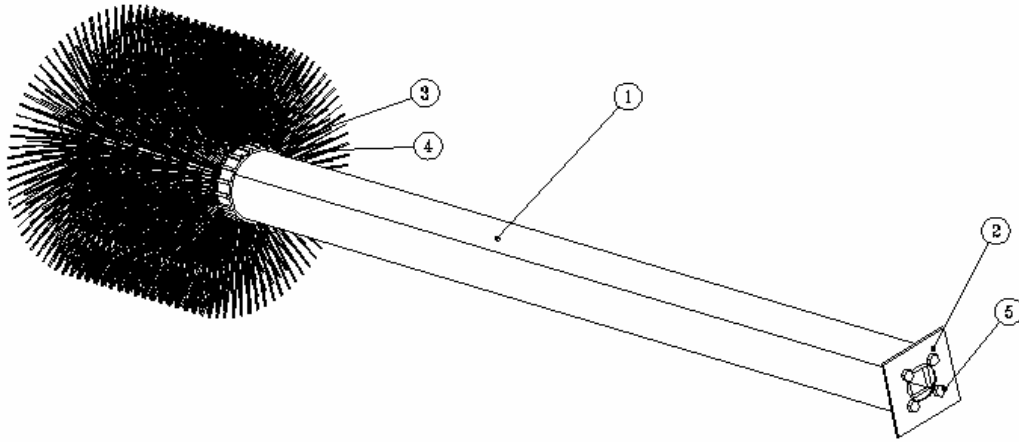
Pos.	Qty.	Description	Reference
1	1	OUTER PISTON PROFILE	56.05.01.00.000
2	1	INNER PISTON PROFILE	56.05.02.00.000
3	1	PISTON ADJUSTMENT PIN	26.09.00.00.001
4	1	Ø10 SPRING PIN	100Y.Ø10 YAYLI

COMPLETE POLY BRUSH



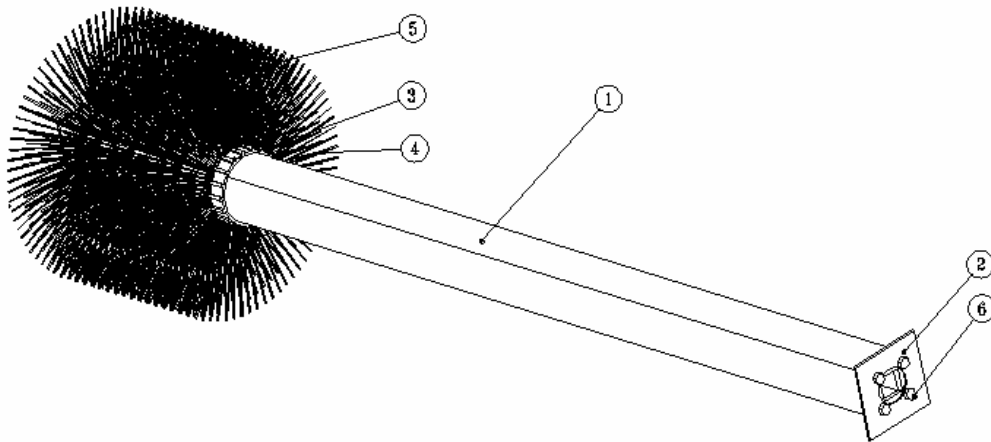
Pos.	Qty.	Description	Reference
1	1	BROOM PROFILE COMPLETE	26.02.01.00.000
2	1	TIGHTNING METAL	26.02.00.00.001
3	40	SPACER	26.02.00.00.002
4	39	POLYPROPYLENE BRUSH	26.02.00.00.003
5	4	M10X20 BOLT 8.8	100C.M10X20

COMPLETE WIRE BRUSH



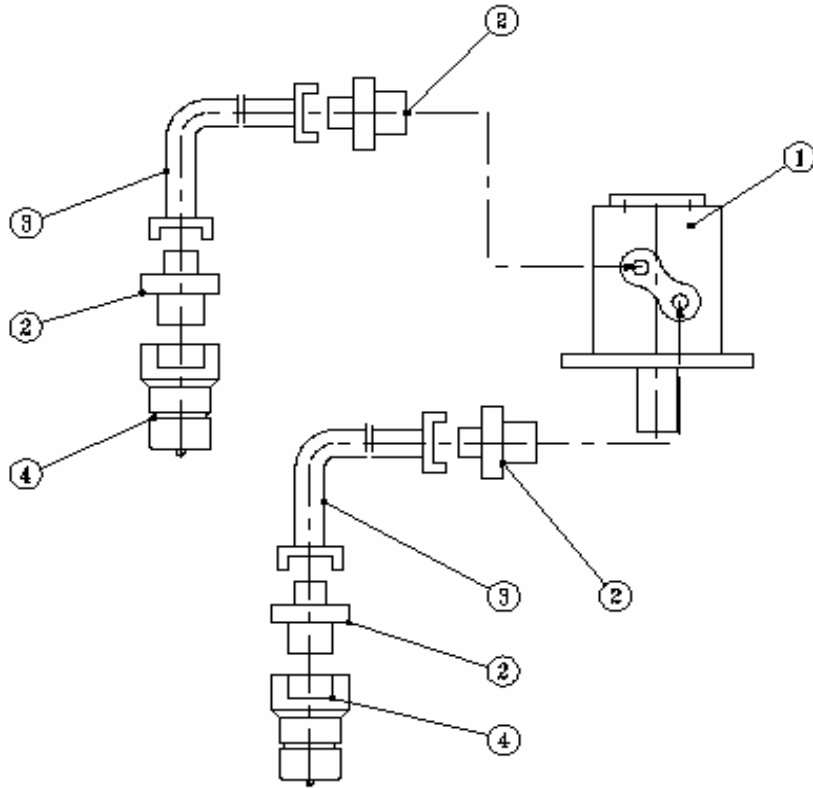
Pos.	Qty.	Description	Reference
1	1	BROOM PROFILE COMPLETE	26.02.01.00.000
2	1	TIGHTNING METAL	26.02.00.00.001
3	40	SPACER	26.02.00.00.002
4	39	WIRE BRUSH	26.02.00.00.004
5	4	M10X20 BOLT 8.8	100C.M10X20

MIXED BRUSH COMPLETE



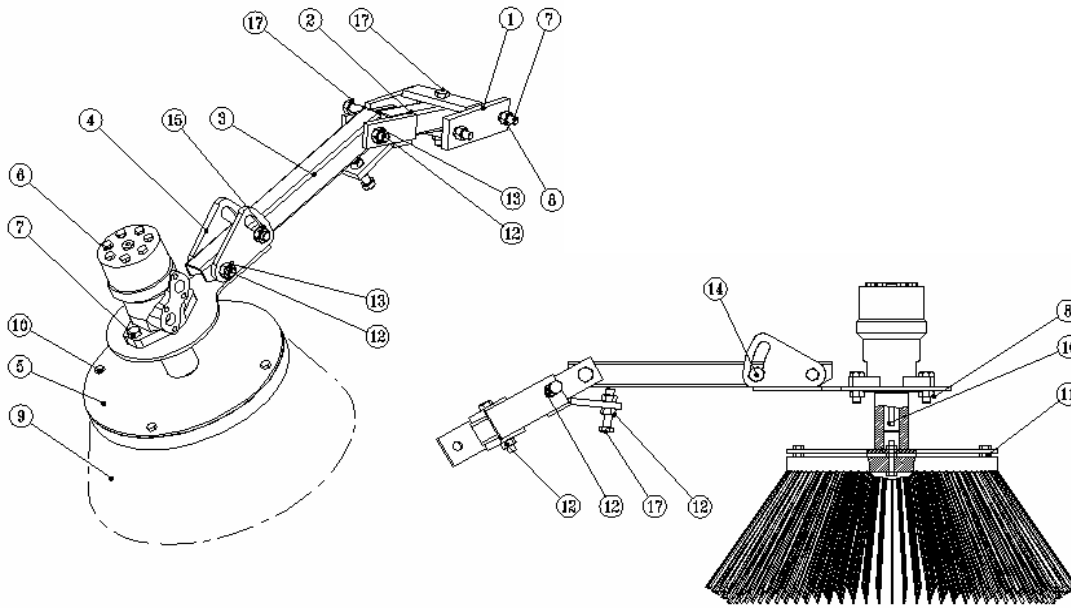
Pos.	Qty.	Description	Reference
1	1	BROOM PROFILE COMPLETE	26.02.01.00.000
2	1	TIGHTNING METAL	26.02.00.00.001
3	40	SPACER	26.02.00.00.002
4	20	POLYPROPYLENE BRUSH	26.02.00.00.003
5	19	WIRE BRUSH	26.02.00.00.004
6	4	M10X20 BOLT 8.8	100C.M10X20

COMPLETE HYDRAULIC



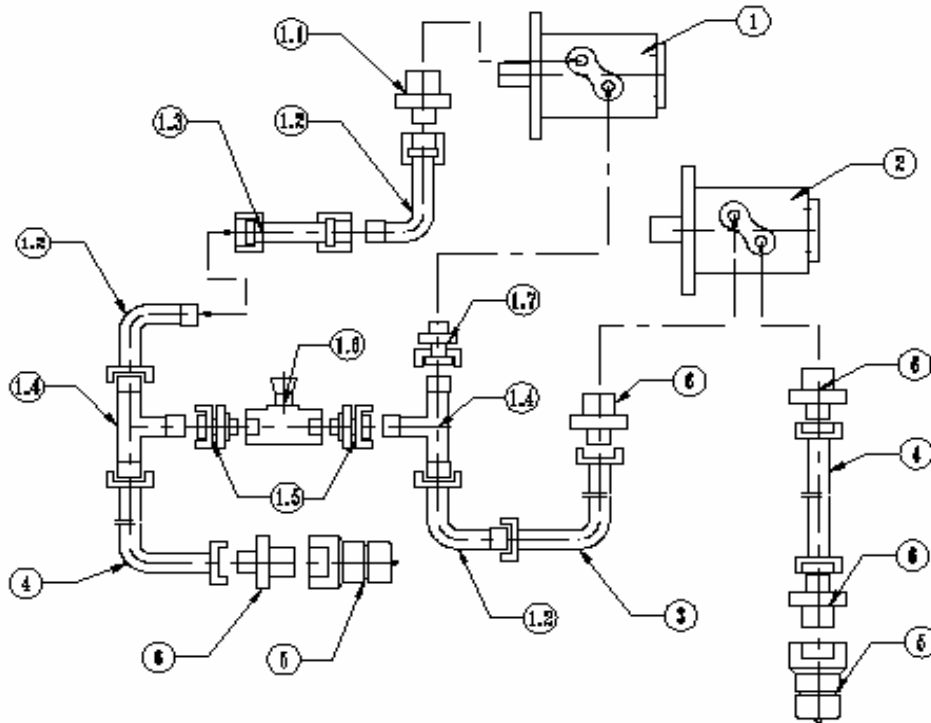
Pos.	Qty.	Description	Reference
1	1	HYDROMOTOR	100HD.EPM200
2	4	CONNECTOR G 1/2 - G 3/8	110HD.1/2X3/8
3	2	H.H. 5/16 R2 G3/8 - 3/8 3.66 M	110HD.5/16 R12
4	2	ADAPTOR G 1/2	110HD.1/2

LATERAL BRUSH



Pos.	Qty.	Description	Reference
1	1	CONNECTING FLAT METAL	56.15.01.00.000
2	1	PROFILE	56.15.02.00.000
3	1	EXTENSION PROFILE	56.15.00.00.001
4	1	ADJUSTMENT SHEET METAL	56.15.03.00.000
5	1	FLANGE	26.11.02.00.000
6	1	HYDROMOTOR	100HD.EPM200
7	4	M12X40 BOLT 8.8	100C.M12X40
8	7	M12 NUT	100S.M12 SOMUN
9	1	LATERAL BRUSH COMPLETE	26.11.05.00.000
10	5	M8X50 BOLT 8.8	100C.M8X50
11	10	M8 NUT	100S.M8 SOMUN
12	2	M14X80 BOLT 8.8	100C.M14X80
13	2	M14 NUT	100S.M14 SOMUN
14	1	M18X80 BOLT 8.8	100C.M18X80
15	1	M18 NUT	100S.M18 SOMUN
16	1	KEYWAY	100KM.8X7X40
17	3	M12X80 BOLT 8.8	100C.M12X80

COMPLETE HYDRAULIC FOR LATERAL BRUSH



Pos.	Qty.	Description	Reference
1	1	EPM HYDROMOTOR	100HD.EPM200
1.1	1	CONNECTOR G1/2 - G3/8	110HD.3/8X1/2
1.2	3	ELBOW G3/8 - G3/8 WITH NUT	110HD.3/8X3/8 DRSK SOM.
1.3	1	EXTENSION PIPE G3/8 X 50 MM G3/8 WITH NUT	110HD.3/8X50MM
1.4	2	T-PIPE G 3/8	110HD.3/8 T
1.5	2	CONNECTOR G3/8 - G3/8 WITH NUT	110HD.3/8X3/8 SOM.
1.6	1	FLOW REGULATOR G 3/8	400HD.3/8
1.7	1	CONNECTOR G 1/2 - G 3/8 WITH NUT	110HD.1/2X3/8 SOM.
2	1	EPM HYDROMOTOR (MAIN BRUSH)	100HD.EPM200
3	1	HOSE 5/16 R2 G3/8 - G3/8 3 MT	110HD.5/16 R2
4	2	HOSE 5/16 R2 G3/8 - G3/8 3.66 MT	110HD.5/16 R2
5	2	ADAPTOR G 1/2	110HD.1/2
6	4	CONNECTOR G3/8 - G3/8	110HD.3/8X3/8

