

Separation made *simple.*

EYS Separator



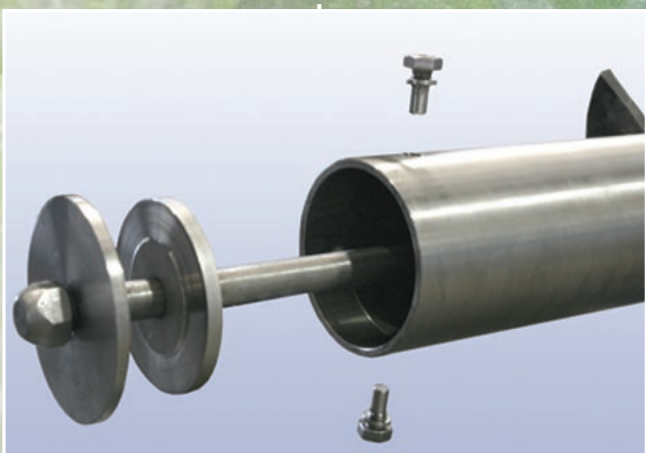
EYS Screw Press Separator



Replacable Wear-Screen

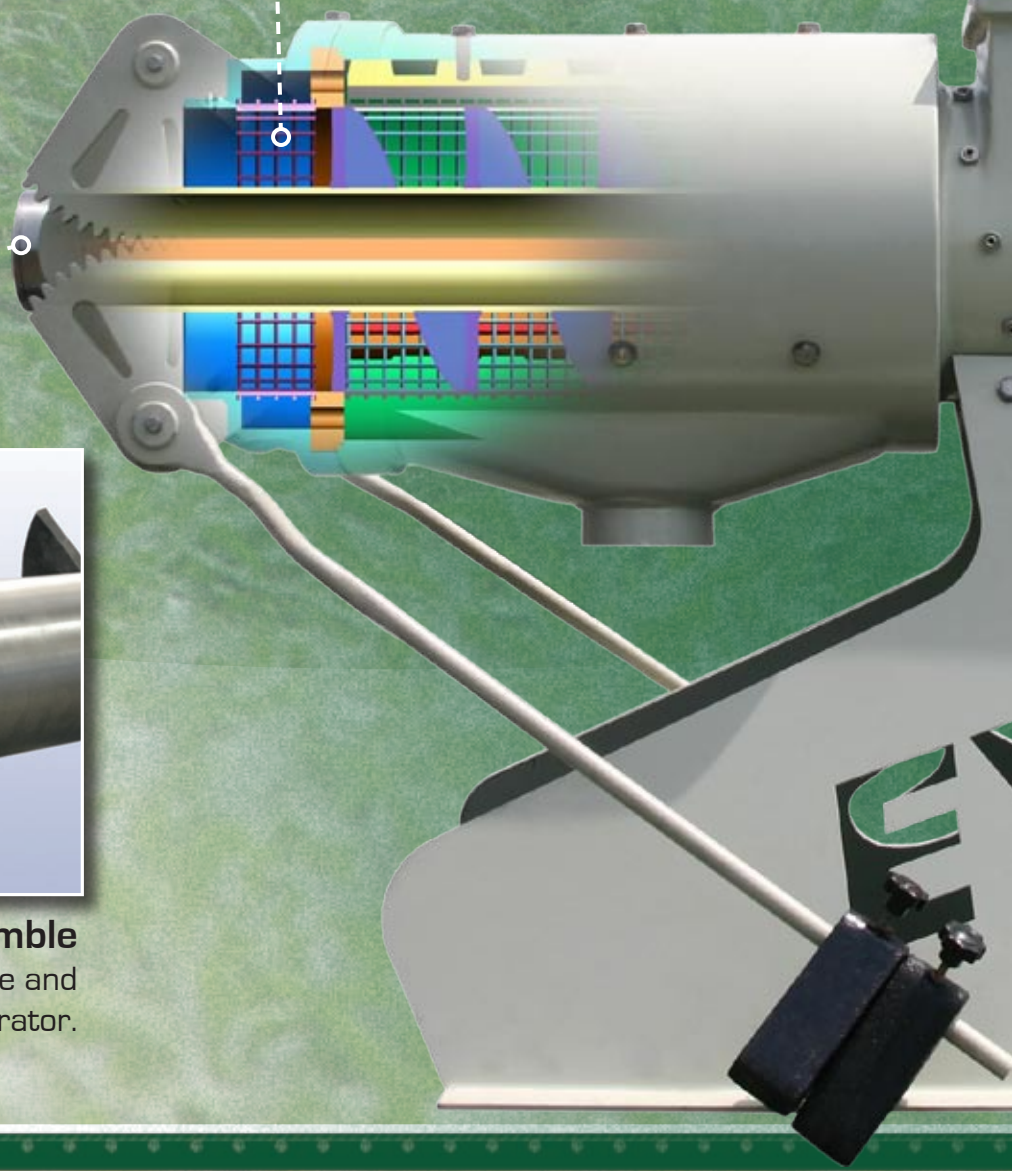
The Auger pushes all the way to our high endurance replacable screen - relieving pressure and wear from the main screen and increasing it's life and durability.

The Anatomy of an



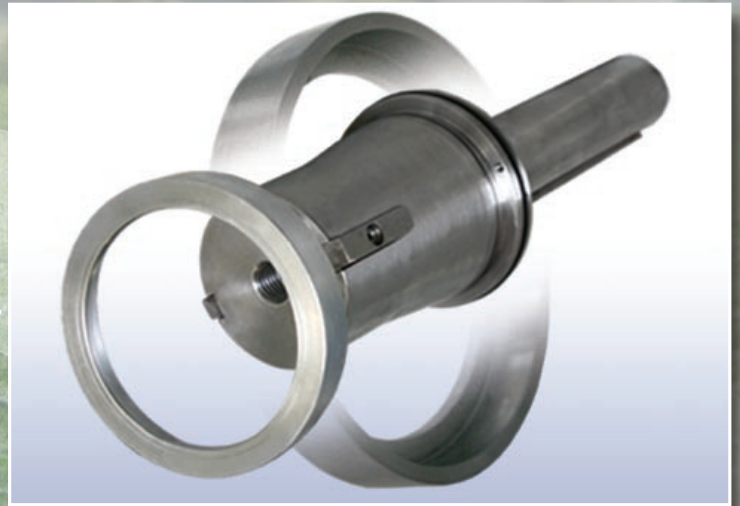
Easy to Assemble

It's a snap to assemble and reassemble the EYS separator.

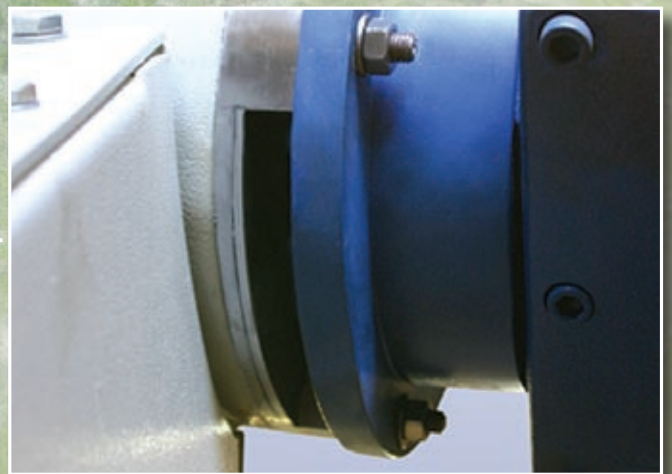
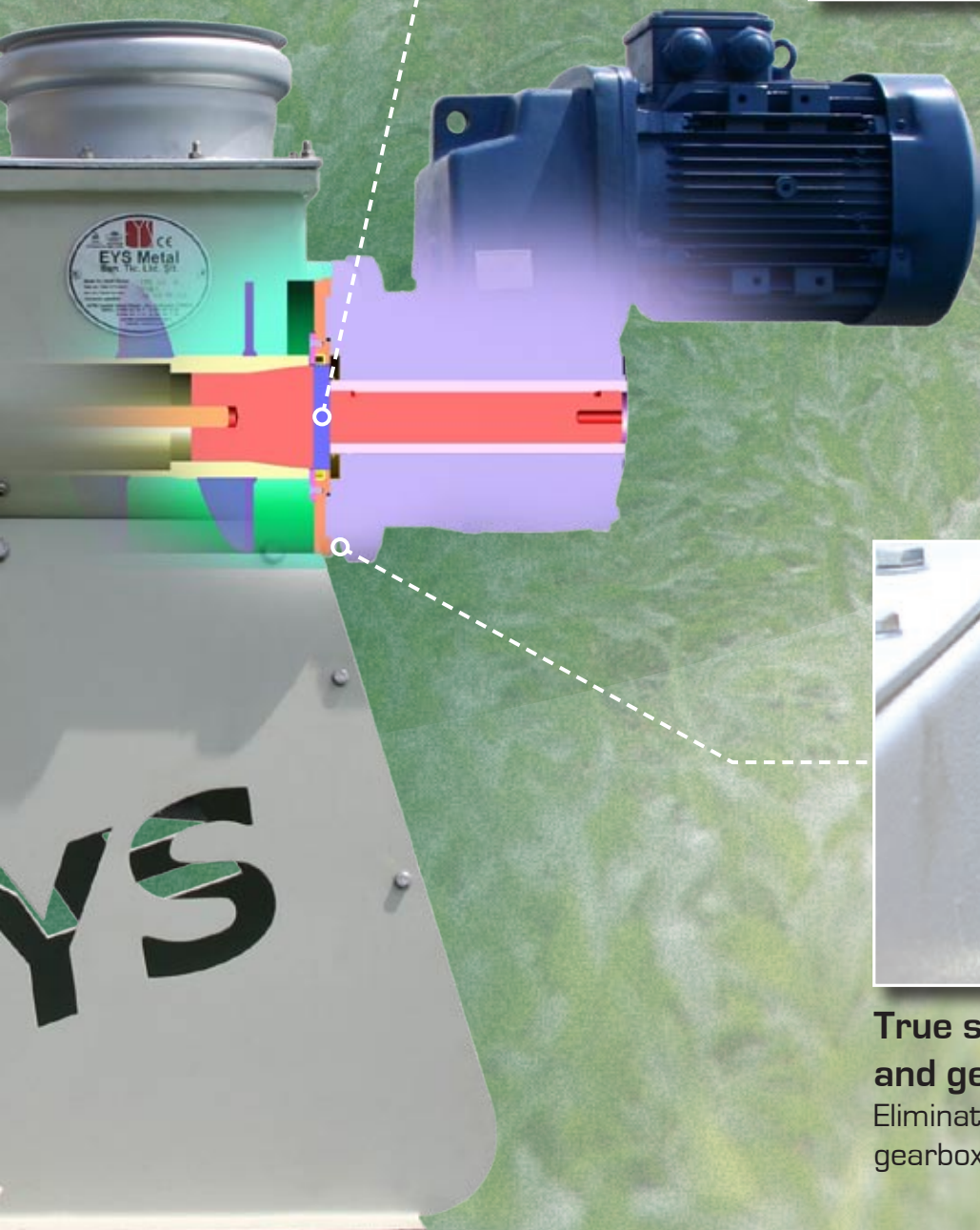


EYS Separator

An insider's view.



Replacable Wear-Ring
Reduces maintainance cost.



True separation between housing and gearbox
Eliminates the risk of manure entering the gearbox.



Left:
Manure is easily separated into dry, manageable solids for stacking or transport.



EYS In Action

Above:
The EYS Screw Press Separator is compact, clean and neat.

EYS Separator: A Separator ahead of it's time...

The EYS Screw Press Separator easily separates solids from liquid portions of fibrous manure. It's ideal for quickly and effectively turning manure into a valuable and marketable end-product.

Features include:

- Quickly dewater manure
- Reduces Lagoon Maintenance
- Increases Lagoon Storage Capacity
- Various Screens available for individual dairy requirements
- Increases Crop production by reducing solids on grass lands